

# Dual Mode (WPC) 5W Wireless Power Receiver and Battery Charger

## General Description

The RT1652 is a wireless power receiver compliant with WPC Low Power v1.2 standard. The RT1652 integrates a synchronous full-bridge rectifier, a low dropout regulator, and a logic controller for control and communication. The device receives AC power from a WPC compatible wireless transmitter and provides output power up to 5W, which could be used as a power supply for a charger of mobile or consumer devices. The RT1652 output can also connect to Li+ battery directly, the direct charge mode features on running battery charger profile (PreCharge/CC/CV), to simplify the charging function design and improve the overall charging efficiency.

The logic controller can support bi-direction channel communication including amplitude shift keying (ASK) modulation for power signal to the transmitter. The RT1652 provides Foreign Object Detection (FOD) function to meet the requirement after WPC V1.2. It communicates with the transmitter for the received power to determine if a foreign object is present within the magnetic interface. This provides a higher level of safety.

The RT1652 provides a programmable dynamic rectifier voltage control function to improve power efficiency, a programmable power management control for maximum power delivery, a programmable current limit for suitable load setting, a programmable temperature setting with external NTC for thermoregulation, and proper protection functions such as UVLO, OVP, and OTP.

## Applications

- Cell Phones, Smart Phones, and Headsets
- Wireless Power Embedded Battery Packs
- Portable Media Players
- Hand-held Devices
- Wearable Devices

## Features

- **Wireless Power Receiver Compliant**
  - ▶ **WPC qi V1.3**
- **Battery Charger**
  - ▶ **Programmable 3V to 12V Out Regulation Voltage**
- **Integrated Synchronous Rectifier Switch**
  - ▶ **Support Output Power Up to 5W**
  - ▶ **High Rectifier Efficiency Up to 96%**
  - ▶ **High System Efficiency Up to 80%**
  - ▶ **Programmable Loading for Synchronous Rectifier Operation**
- **Programmable Dynamic Rectifier Voltage Control for Optimized Transient Response and Power Efficiency**
- **Highly Accurate Received Power Calculation for FOD Function**
  - ▶ **12-bit ADC for Voltage/Current Measurement**
  - ▶ **Coil Power Loss Modeling for Optimized Compensation**
  - ▶ **Adaptive Power Offset Compensation**
- **Embedded Logic Controller**
  - ▶ **272B MTP for Programmable**
- **Support Bi-direction Channel Communication**
  - ▶ **ASK Modulation for Power Signal to Wireless Power Transmitter**
- **Programmable Temperature Control**
- **Programmable Charge Status Packet (0x05)**
- **Support Alignment with Transmitter**
- **Support Enable, Charge Complete and Fault Control Inputs**
- **Receiver Controlled EPT Packet**
- **Over-Current Limit**
- **Over-Voltage Protection**
- **Thermal Shutdown**
- **CSP 2.8mm x 2.6mm 36B (Pitch = 0.4mm)**
- **Low Profile (0.5mm Max.)**

## Ordering Information

RT1652 □

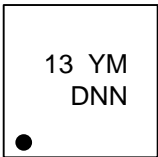
Package Type  
WSC : WL-CSP-36B 2.8x2.6 (BSC)

Note :

Richtek products are :

- ▶ RoHS compliant and compatible with the current requirements of IPC/JEDEC J-STD-020.
- ▶ Suitable for use in SnPb or Pb-free soldering processes.

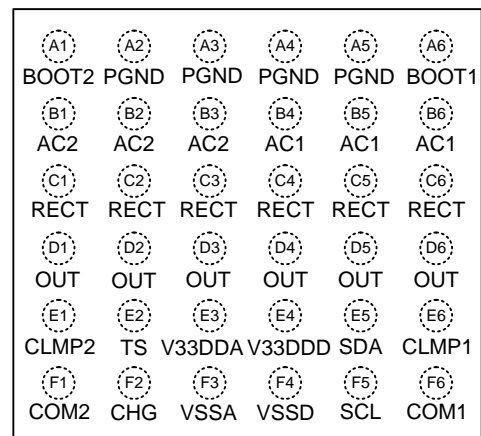
## Marking Information



13 : Product Code  
YMDNN : Date Code

## Pin Configuration

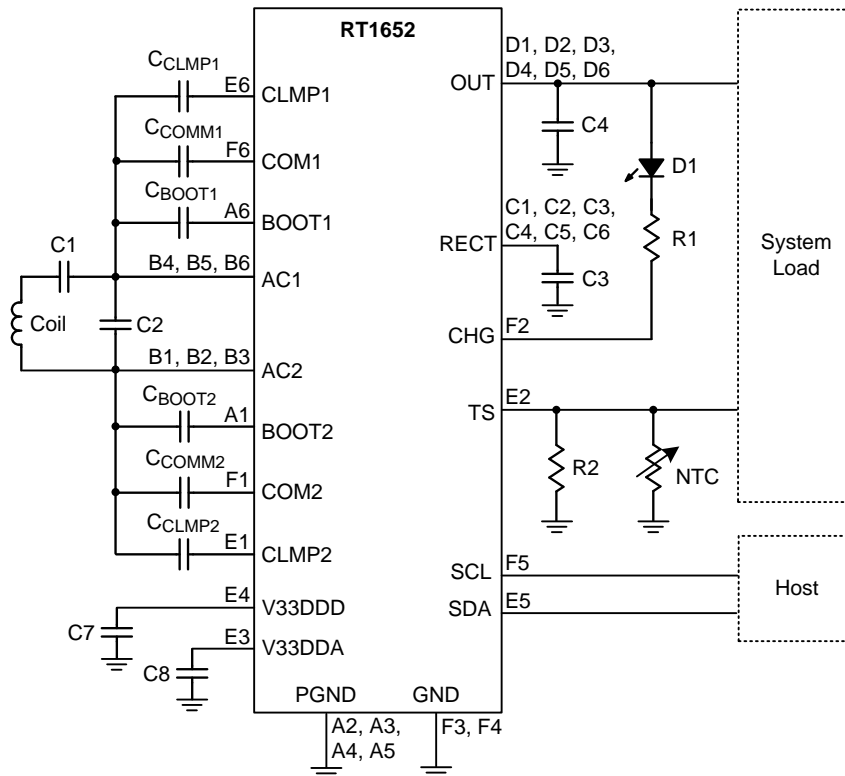
(TOP VIEW)



WL-CSP-36B 2.8x2.6 (BSC)

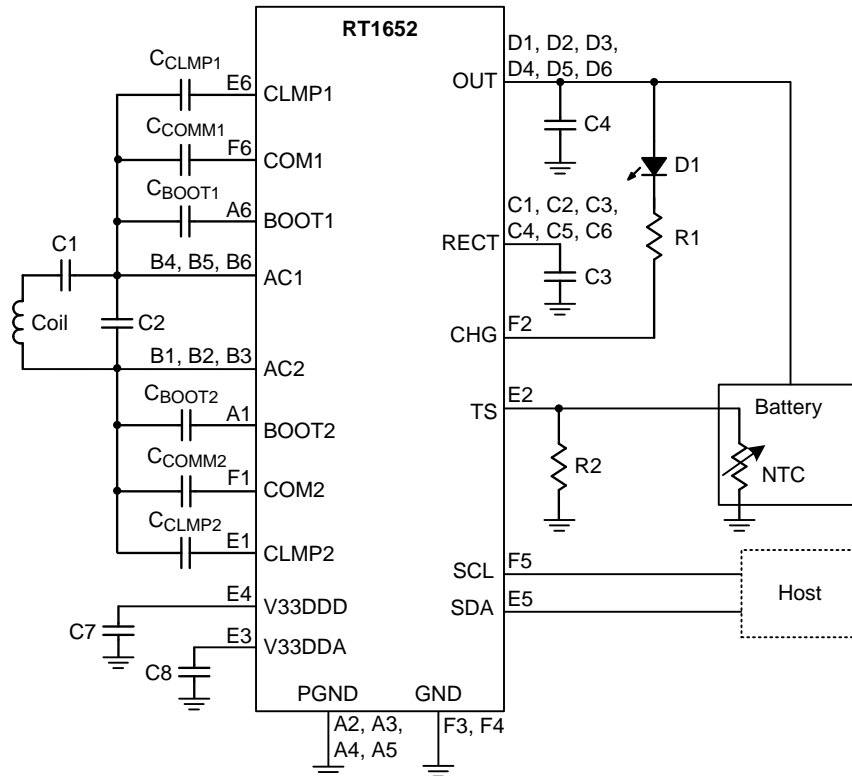
## Typical Application Circuit I

(Used as a Wireless Power Receiver for System Loads)



**Typical Application Circuit II**

(Used as a Wireless Power Receiver for Battery Charger)

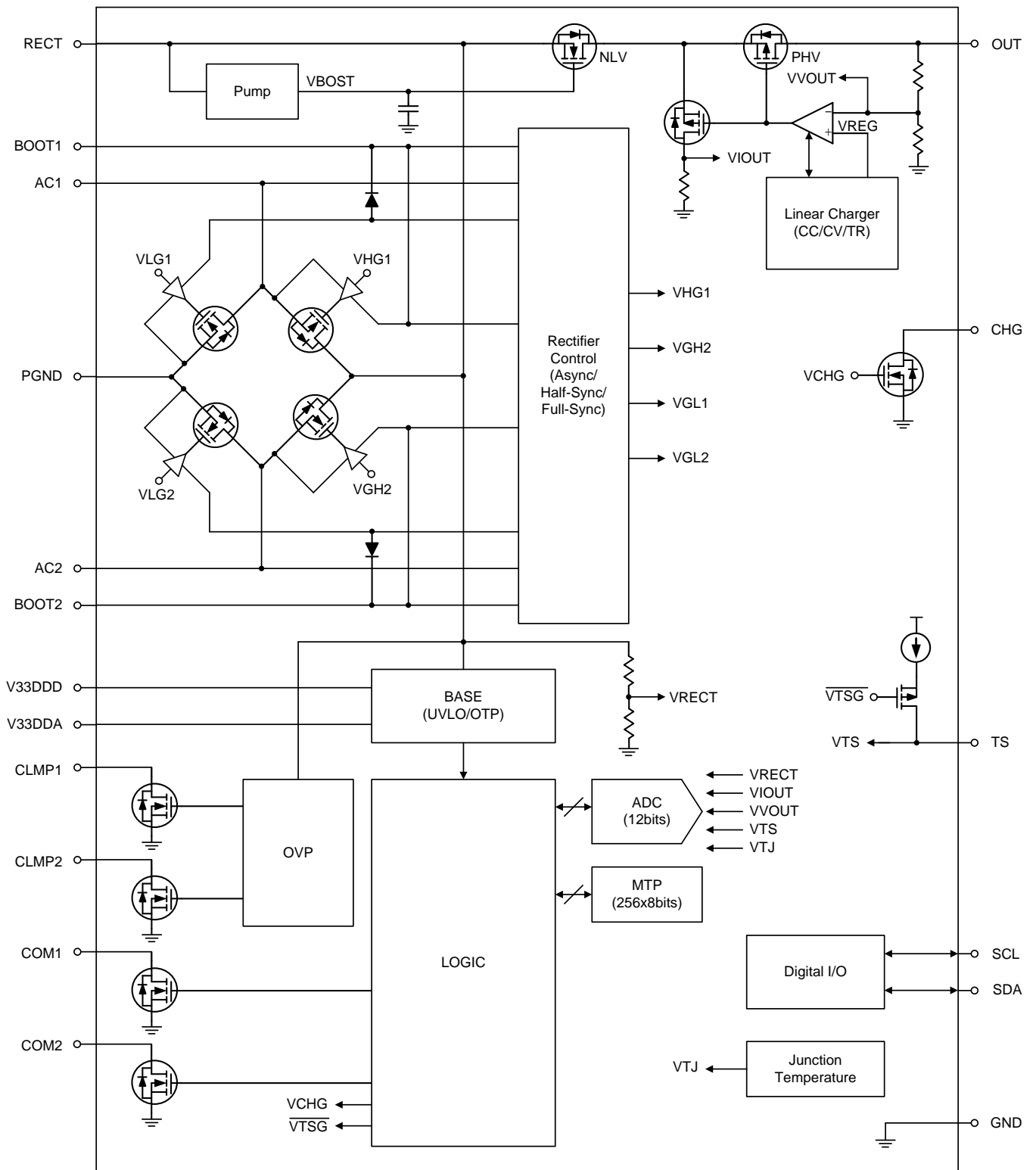


**Functional Pin Description**

Pin No.	Pin Name	I/O	Pin Function
B4 to B6	AC1	I	AC power input from receiver coil.
B1 to B3	AC2	I	
A6	BOOT1	O	Bootstrap supply for driving the high-side FETs of synchronous rectifier. Connect a 10nF ceramic capacitor from BOOT1 to AC1 and from BOOT2 to AC2.
A1	BOOT2	O	
C1 to C6	RECT	O	Output of synchronous rectifier. Connect a ceramic capacitor (10μF to 22μF) between this pin to PGND.
D1 to D6	OUT	O	Power output of regulator.
F6	COM1	O	Open-drain output for communication with transmitter. Connect through a capacitor to AC1/AC2 for capacitive load modulation.
F1	COM2	O	
E6	CLMP1	O	Open-drain output for over-voltage clamp protection. Connect a 0.47μF ceramic capacitor between this pin to AC1/AC2. When the RECT voltage exceeds 11.5V, both switches will be turned on and the capacitors will act as a low impedance to protect the IC from damage.
E1	CLMP2	O	
A2 to A5	PGND		Power ground.

Pin No.	Pin Name	I/O	Pin Function
E2	TS	I	Temperature sense input. Connect a NTC between this pin and GND for temperature sensing. If the temperature sensing function is desired, connect a 10k $\Omega$ resistor to GND. Host side can control this pin to send end power transfer (EPT) to the transmitter: pull-low for EPT fault; pull-up for EPT termination.
F2	CHG	O	Open-drain indicator output. When the output regulator is enabled, this pin is pulled to low.
F5	SCL	I	I <sup>2</sup> C compatible series-clock input for internal register/MTP access.
E5	SDA	I/O	I <sup>2</sup> C compatible series-data input/output for internal register/MTP access.
E4	V33DDD	O	Voltage supply for internal circuit. Connect a 1 $\mu$ F ceramic capacitor between this pin and GND.
E3	V33DDA	O	Voltage supply for internal circuit. Connect a 1 $\mu$ F ceramic capacitor between this pin and GND.
F3	VSSA	GND	Analog ground.
F4	VSSD	GND	Digital ground.

**Functional Block Diagram**



## Operation

### Digital Controller Circuit

To flexibly control whole functions, this chip embedded a MTP (Multiple Time Programmable) memory to save various setting and parameters. The external host can real-time read some power information via I<sup>2</sup>C interface.

### OVP (Over-Voltage Protection)

The OVP function using to protect the abnormal power signal to let the RT1652 damaged. Once the VRECT exceeds 14.5V, this block will drive the CLAMP MOS to avoid the over voltage damage.

### OTP (Over-Temperature Protection)

The OTP function shuts down the linear regulator operation when the junction temperature exceeds 150°C. Once the junction temperature cools down by around 20°C, the receiver will automatically resume operating.

### Synchronous Rectifier Control

This block detect the zero-cross of the AC1 and AC2 voltage then control the high-side and low-side MOS of the rectifier. The RT1652 provide the Asynchronous, Half-synchronous and Full-synchronous control to optimize the rectifier efficiency.

### Packet Control

This block build up the WPC standard 2kHz bi-phase encoding scheme with the asynchronous serial format and the packet structure. This block control the open-drain MOS to achieve the ASK (Amplitude Shift Key) communication.

**Absolute Maximum Ratings** (Note 1)

- Supply Input Voltage, OUT, CHG ----- -0.3V to 20V
- Supply Input Voltage, AC1, AC2, RECT, COM1,  
COM2, CLMP1, CLMP2 (Note 6) ----- -0.3V to 23V
- Supply Input Voltage, BOOT1, BOOT2 ----- -0.3V to 26V
- Other Pins ----- -0.3V to 6V
- Input Current, AC1, AC2 ----- 2A (rms)
- Output Current, OUT ----- 2A
- Output Sink Current, CHG ----- 15mA
- Output Sink Current, COM1, COM2 ----- 1A
- Power Dissipation, P<sub>D</sub> @ T<sub>A</sub> = 25°C  
WL-CSP-36B 2.8x2.6 (BSC) ----- 3.33W
- Package Thermal Resistance (Note 2)  
WL-CSP-36B 2.8x2.6 (BSC), θ<sub>JA</sub> ----- 30°C/W
- Lead Temperature (Soldering, 10 sec.) ----- 260°C
- Junction Temperature ----- 150°C
- Storage Temperature Range ----- -65°C to 150°C
- ESD Susceptibility (Note 3)  
HBM (Human Body Model) ----- 2kV

**Recommended Operating Conditions** (Note 4)

- Supply Input Voltage Range, RECT ----- 2.7V to 14.5V
- Input Current, RECT ----- 1.5A
- Output Current, OUT ----- 1.5A
- Sink Current, COM ----- 500mA
- Ambient Temperature Range ----- -40°C to 85°C
- Junction Temperature Range ----- -40°C to 125°C

**Electrical Characteristics**

(T<sub>A</sub> = 25°C, unless otherwise specified)

Parameter	Symbol	Test Conditions	Min	Typ	Max	Unit
<b>Input</b>						
RECT Under-Voltage Lockout Threshold	V <sub>RECT_UVLO</sub>	V <sub>RECT</sub> rising : 0V → 3V	2.6	2.7	2.8	V
RECT UVLO Hysteresis		V <sub>RECT</sub> falling : 3V → 0V	190	250	310	mV
RECT Over-Voltage Threshold	V <sub>RECT_OVP</sub>	V <sub>RECT</sub> rising : 13.5V → 15.5V	14	14.5	15	V
RECT Over-Voltage Hysteresis		V <sub>RECT</sub> falling : 15.5V → 13.5V	100	150	200	mV
Dynamic V <sub>RECT</sub> Setting-1	V <sub>RECT_SET1</sub>	(V <sub>RECT_SET1</sub> = 8'hC8) (Note 5)	--	2	--	V

Parameter	Symbol	Test Conditions	Min	Typ	Max	Unit
Dynamic VRECT Setting-2	VRECT_SET2	(VRECT_SET2 = 8'h96) (Note 5)	--	1.5	--	V
Dynamic VRECT Setting-3	VRECT_SET3	(VRECT_SET3 = 8'h32) (Note 5)	--	0.5	--	V
Dynamic VRECT Setting-4	VRECT_SET4	(VRECT_SET4 = 8'h1E) (Note 5)	--	0.3	--	V
IOUT Hysteresis for Dynamic VRECT Settings	IOUT_TH_HYS	Output current < 400mA	--	20	--	mA
		Output current > 400mA	--	5	--	%
RECT Quiescent Current	Iq		2	3	4	mA
<b>Regulator Output</b>						
OUT Regulation Voltage	VOUT_REG	IOUT = 1mA	4.95	5	5.05	V
		IOUT = 1A	4.94	4.99	5.04	
		IOUT = 1.5A	4.90	4.96	5.02	
Regulator Drop-out Voltage	VDROP	VRECT – VOUT, IOUT = 1A	50	100	150	mV
Output Current Limit	IOUT_LIMIT	Programmable (Note 5)	0.1	--	2	A
Output Current Limit Tolerance		IOUT = 1.5A (Note 5)	-10	--	10	%
OUT Leakage Current	IOUT_LKG	VOUT disabled	--	--	1	μA
<b>Synchronous Rectifier</b>						
Programmable IOUT Threshold Range to Enable Half-Synchronous Rectifier	ISR_TH	IOUT rising (Note 5)	50	--	500	mA
Programmable IOUT Threshold Range to Enable Full-Synchronous Rectifier		IOUT rising (Note 5)	150	--	750	
Programmable IOUT Hysteresis Range		IOUT falling (Note 5)	25	--	100	
Rectifier Diode Voltage in Asynchronous Mode	VDIODE	IAC-VRECT = 250mA	0.5	0.65	0.8	V
<b>TS Sense/Control Input</b>						
TS Thermoregulation Threshold	VTS_REG	VTS falling (TS_th = 8'h192) (Note 5)	--	474	--	mV
Too-Hot Protection Threshold	VTS_HOT	VTS falling (TS_hot = 8'h8E) (Note 5)	--	277	--	mV
Too-Cold Protection Threshold	VTS_COLD	VTS rising (TS_hot = 12'h3A4) (Note 5)	--	1.98	--	V
TS Output Current	ITS		--	60	--	μA
<b>Over-Temperature Protection</b>						
Over-Temperature Protection Threshold	TJ	(Note 5)	--	150	--	°C
Over-Temperature Protection Hysteresis		(Note 5)	--	20	--	



Parameter	Symbol	Test Conditions	Min	Typ	Max	Unit
<b>CHG Indicator Output</b>						
CHG Low-Level Output Voltage	VCHG_L	ISINK = 5mA	--	--	100	mV
CHG Leakage Current When Disabled	ICHG_LKG	VCHG = 20V	--	--	1	μA
<b>COM Outputs</b>						
COM1, COM2 N-FET On-Resistance	RON_COM	VRECT = 2.6V	0.6	0.9	1.2	Ω
COM1, COM2 Signaling Frequency	fCOM	(Note 5)	1.92	2	2.08	kHz
COM1, COM2 Leakage Current	ICOM_LKG	VCOM1 = VCOM2 = 20V	--	--	1	μA
<b>CLAMP Outputs</b>						
CLMP1, CLMP2 N-FET On-Resistance	RON_CLM		0.5	0.75	1	Ω
<b>Received Power (WPC Related Measurements)</b>						
Received Power Accuracy	PRX_AC	IOUT = 0A to 1A (Note 5)	--	--	0.25	W
<b>I<sup>2</sup>C Compatible Interface (Note5)</b>						
Logic Input (SDA, SCL) Low Level	VSCL_L		--	--	0.6	V
Logic Input (SDA, SCL) High Level	VSCL_H		1.2	--	--	V
SCL Clock Frequency	fCLK		10	--	400	kHz
Output Fall Time	tFL2COUT		--	--	250	ns
Bus Free Time Between Stop/Start	tBUF		1.3	--	--	μs
Hold Time Start Condition	tHD_STA		0.6	--	--	μs
Setup Time for Start Condition	tSU_STA		0.6	--	--	μs
SCL Low Time	tLOW		1.3	--	--	μs
SCL High Time	tHIGH		0.6	--	--	μs
Data Setup Time	tSU_DAT		100	--	--	ns
Data Hold Time	tHD_DAT		0	--	900	ns
Setup Time for Stop Condition	tSU_STO		0.6	--	--	μs

**Note 1.** Stresses beyond those listed under “Absolute Maximum Ratings” may cause permanent damage to the device. These are stress ratings only, and functional operation of the device at these or any other conditions beyond those indicated in the operational sections of the specifications is not implied. Exposure to absolute maximum rating conditions may affect device reliability.

**Note 2.** θ<sub>JA</sub> is measured under natural convection (still air) at T<sub>A</sub> = 25°C with the component mounted on a high effective-thermal-conductivity four-layer test board on a JEDEC 51-7 thermal measurement standard.

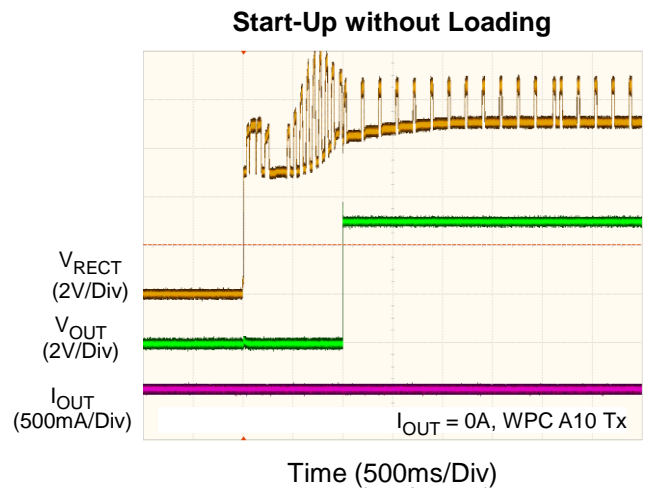
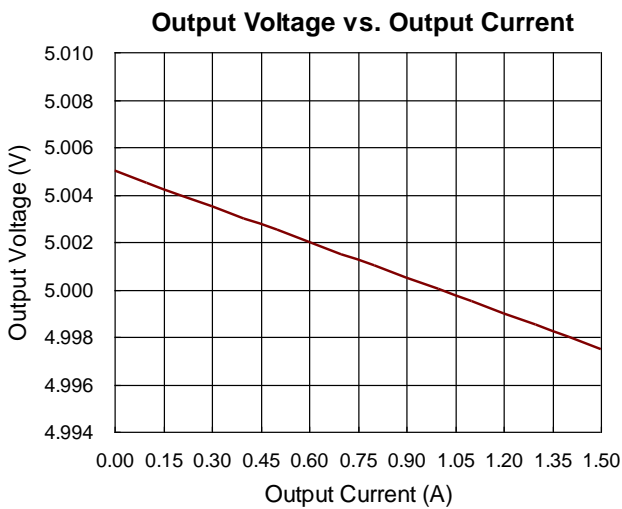
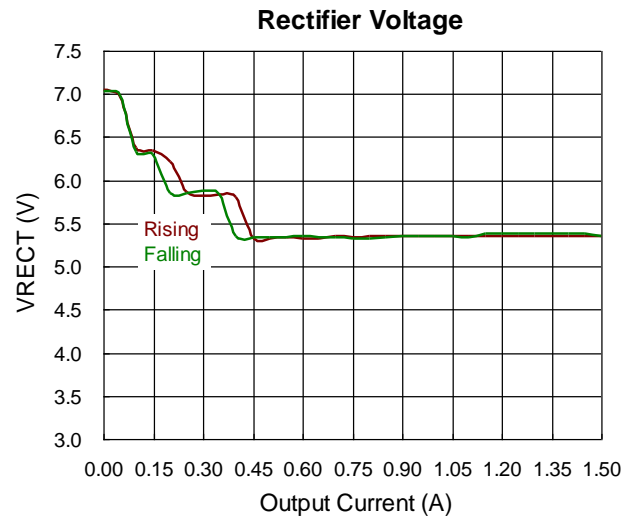
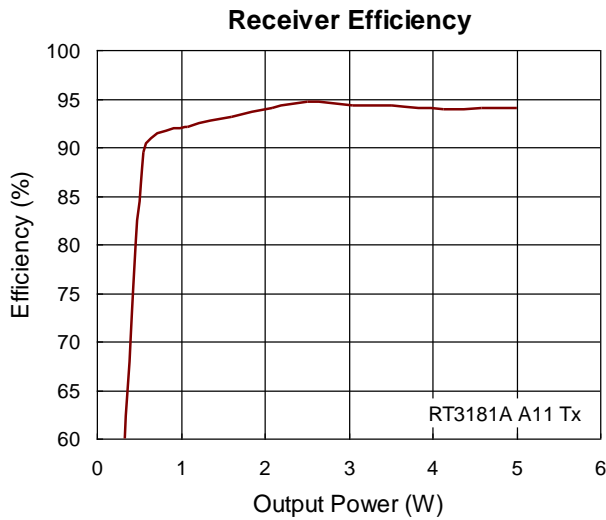
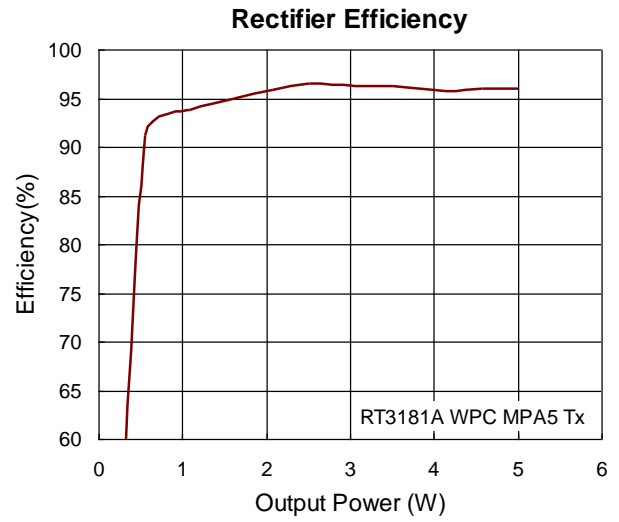
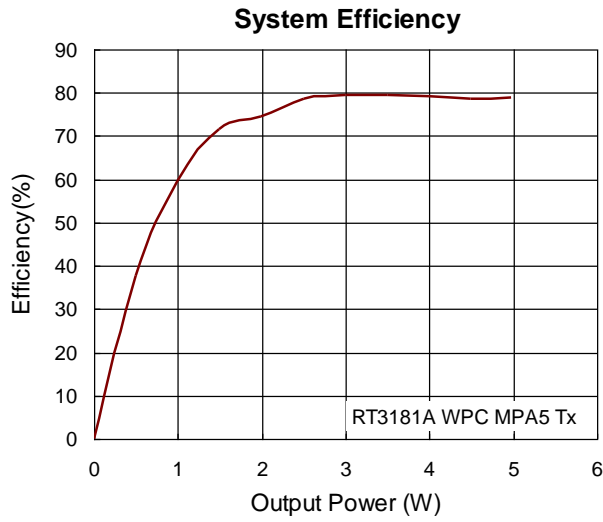
**Note 3.** Devices are ESD sensitive. Handling precautions are recommended.

**Note 4.** The device is not guaranteed to function outside its operating conditions.

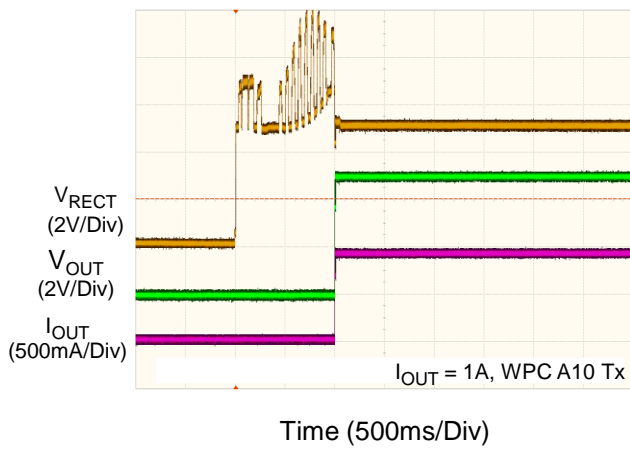
**Note 5.** Specification is guaranteed by design and/or correlation with statistical process control.

**Note 6.** These test items are tested by pulse condition. The pulse patent which is 10% of duty cycle and 10ms width

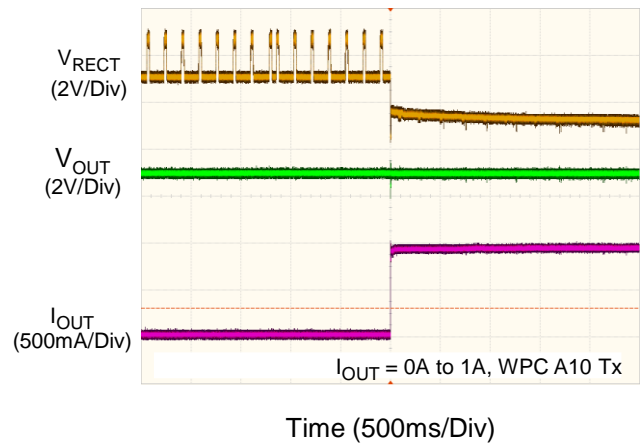
## Typical Operating Characteristics



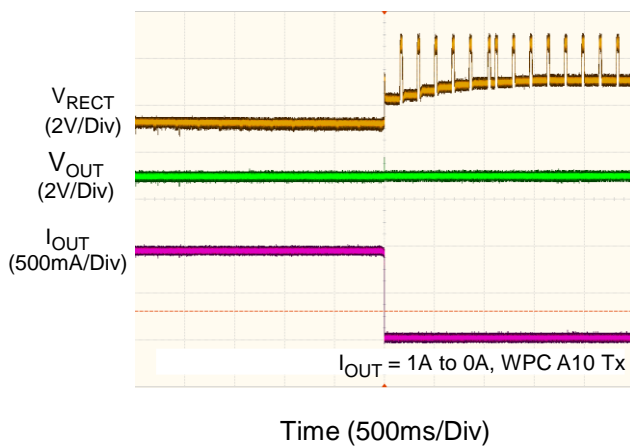
Start-Up with Loading



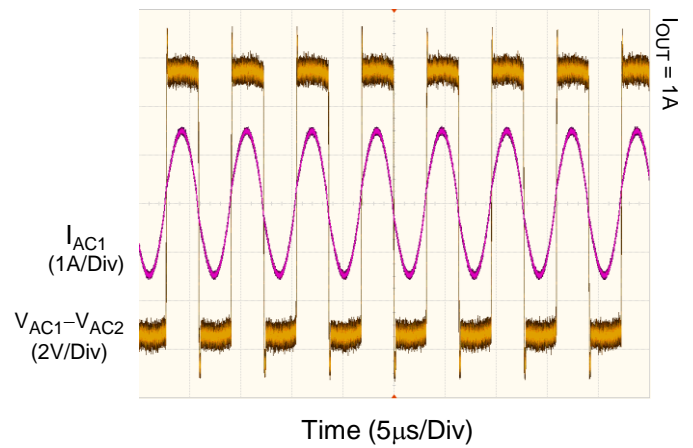
Load Transient Response



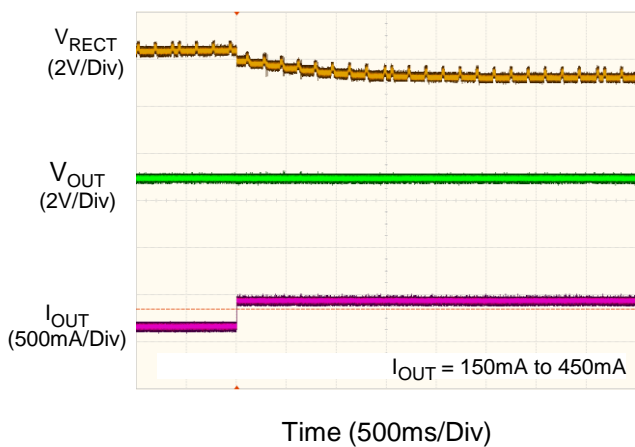
Load Transient Response



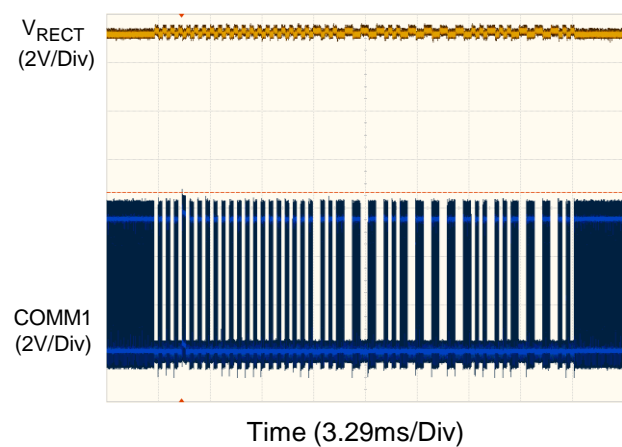
Synchronous Rectifier

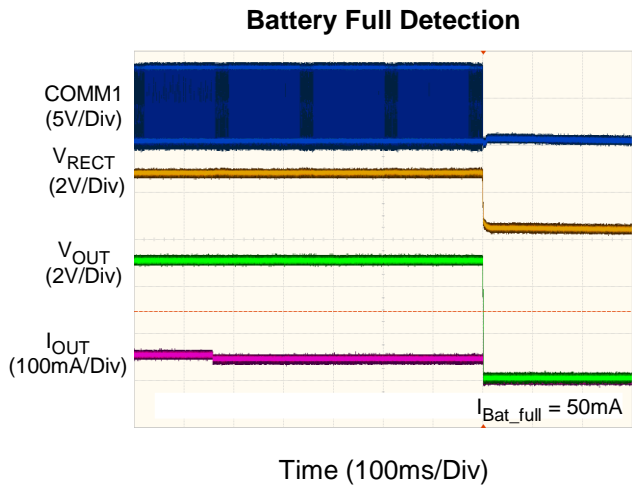


Dynamic Rectifier Voltage



Communication





## Functional Description

*Richtek's component specification does not include the following information in the Application Information section. Thereby no warranty is given regarding its validity and accuracy. Customers should take responsibility to verify their own designs and to ensure the functional suitability of their components and systems.*

### Description of the Wireless Power System

A wireless power system is composed by a power transmitter with one or more primary coils and a power receiver in a mobile system. Power transmitter will transfer power via a DC-to-AC inverter to drive a strong-coupled inductor to power receiver in a mobile device.

The power transferred to power receiver is controlled by itself. The power receiver sends communication packets with control error voltage information to the power transmitter for power tracking. The bit rate of the communication link from receiver to transmitter is 2kbps.

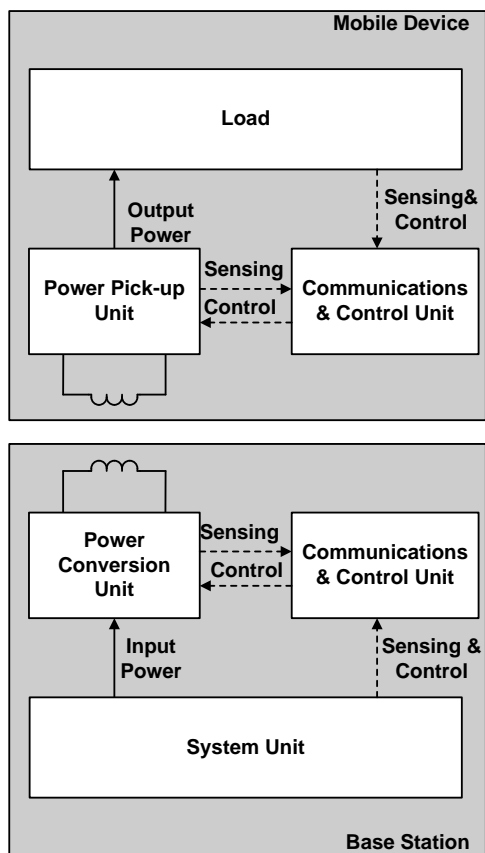


Figure 1. Wireless Power System

### Start-Up

When the receiver is placed on the power pad, the receiver coil is inductively coupled to the magnetic flux generated by the coil in the power pad which consequently induces a voltage in the receiver coil. The internal synchronous rectifier feeds this voltage to the RECT pin which has the filter capacitor. The RT1652 communicates to the transmitter by switching on and off the COM FETs.

### Power Transfer Phases

There are 4 power transfer phases for the WPC V1.2.

- **Selection :** As soon as the Power Transmitter applies a Power Signal, the Power Receiver shall enter the selection phase.
- **Ping :** The power Receiver should send the Digital Ping Packet to power Transmitter then into next phase. If not, the system shall revert to the Selection phase. The power Receiver also can send the End Power transfer Packet to stop the power Transmitter.
- **Identification & Configuration :** In this phase, the Power Receiver identifies the revision of the System Description Wireless Power Transfer the Power Receiver complies and configuration information such as the maximum power that the Power Receiver intends to provide at its output. The Power Transmitter uses this information to create a Power Transfer Contract.
- **Power Transfer :** In this phase, the Power Transmitter continues to provide power to the Power Receiver. The power Receiver sends the Control Error Packet for adjusting the Primary Cell current. The Power Transmitter stops to provide power when the Received Power Packet is too low to trigger the FOD function or End Power Transfer Packet is sent from power Receiver.

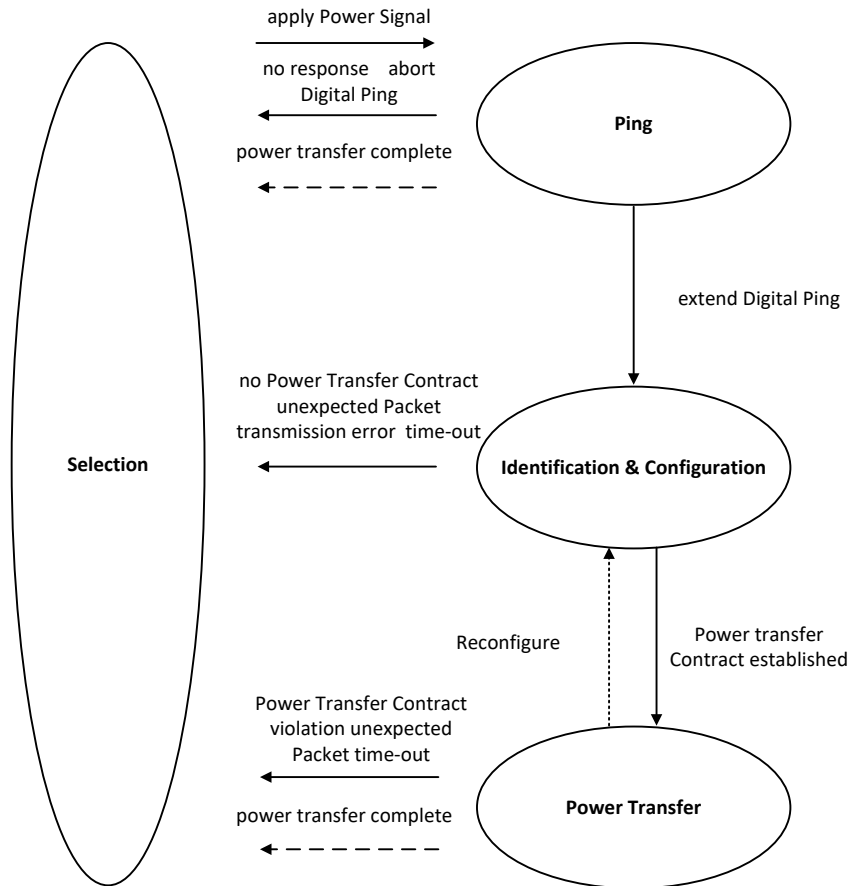


Figure 2. WPC V1.2 Low Power Transfer Phases

**Micro Controller Unit**

**Peripheral**

There are 2 peripheral blocks in RT1652, MTP and peripheral registers. MTP (Multiple Time Programmable Memory) is primarily used to save non-volatile user setting data and part of MTP store internal factory setting. User firmware can control some of chip hardware behavior via peripheral registers. It also could be an interface to communicate with external I<sup>2</sup>C via the registers.

0x4000_0000	MTP 272B	Peripheral
0x4000_01FF		
	reserved	
0x5000_0000	Peripheral Register	
0x5000_1FFF		

Figure 3. Memory Map

**Programmable Dynamic Rectifier Voltage Control**

The RT1652 provides a programmable Dynamic Rectifier Voltage Control function to optimize the transient response and power efficiency for applications. Table 1 and Figure 4 show an example to summarize how the rectifier behavior is dynamically adjusted based the registers VRECT\_SETx [7:0] (x = 1 to 4), which are available to be programmed by users.

**Table 1. Dynamic Rectifier Voltage Setting**

Output Current, I <sub>OUT</sub>	Rectifier Voltage Target
< I <sub>OUT_TH1</sub>	VRECT_SET1
I <sub>OUT_TH1</sub> to I <sub>OUT_TH2</sub>	VRECT_SET2
I <sub>OUT_TH2</sub> to I <sub>OUT_TH3</sub>	VRECT_SET3
> I <sub>OUT_TH3</sub>	VRECT_SET4

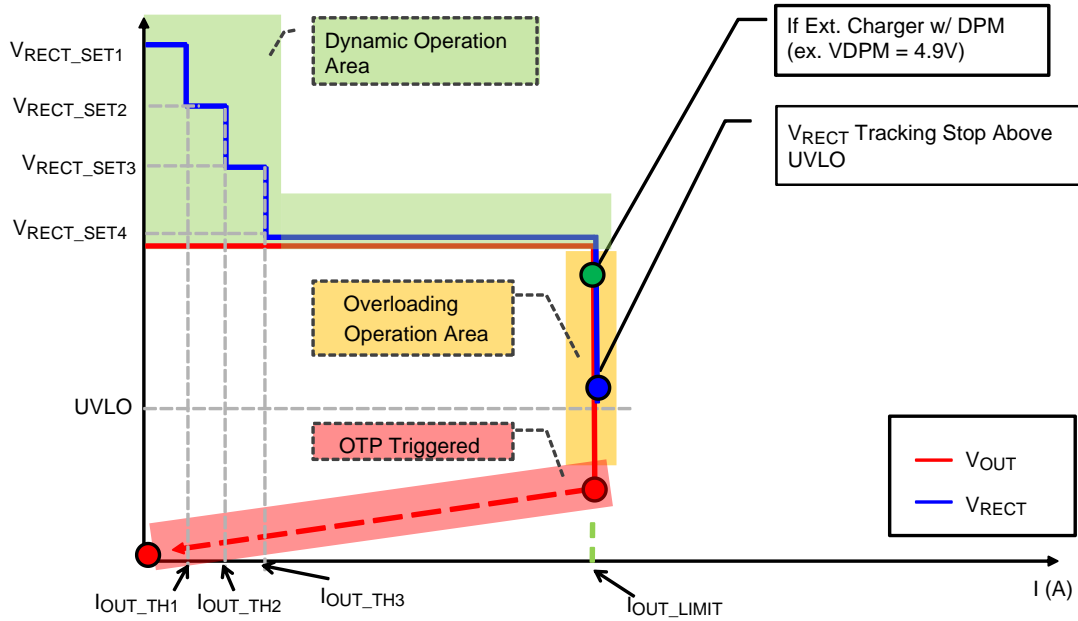


Figure 4. Dynamic Rectifier Voltage vs. Output Current

**Thermal Management**

The RT1652 provides an external device thermal management function with an external NTC thermistor and a resistor connected between TS pin and GND pin shown as Figure 5. User can use this function to control the temperature of the coil, battery or other device. An internal current source (60μA) is provided to the external NTC thermistor and generates a voltage at the TS pin. The TS voltage is detected and sent to the ADC converter for external device thermal manage control.

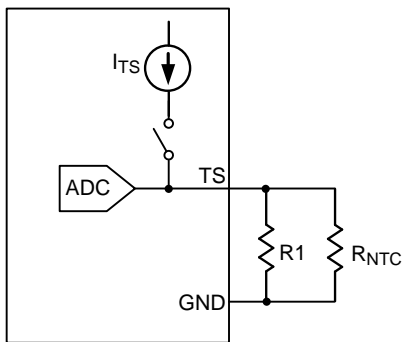


Figure 5. NTC Circuit for Device Temperature Detection and Thermoregulation

The thermal management function is shown as Figure 6. If the temperature is higher than Hot\_temp or lower than Cold\_temp threshold, the RT1652 will send the EPT to disable the power transfer. When the detected temperature increases and reaches the desired Regulation\_temp, RT1652 will decrease the current limit to reduce the output current to regulate the temperature. When the detected temperature is lower than the Regulation\_temp, the current limit will increase to the default value. This function is shown as Figure 7.

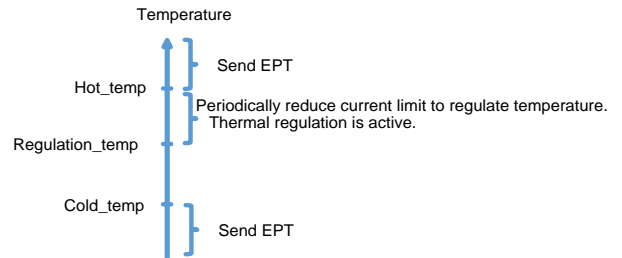


Figure 6. Thermal Management Function

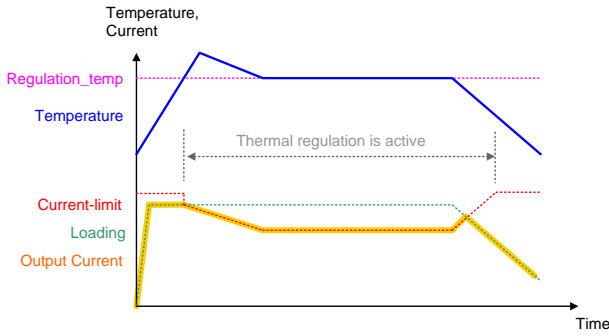


Figure 7. Thermoregulation Control

The NTC thermistor should be placed as close as possible to the device such as battery or mobile device. The recommended NTC thermistor is NCP15WF104F03RC (tolerance ±1%, β = 4250k). The typical resistance of the NTC is 100kΩ at 25°C. The recommended resistance for R1 is 33kΩ (±1%). The value of the NTC thermistor at the desired temperature can be estimated by the following equation.

$$R_{NTC\_Reg} = R_0 e^{\beta \left( \frac{1}{T_{Reg}} - \frac{1}{T_0} \right)}$$

$$R_{eg} = \frac{R_1 \times R_{NTC\_Reg}}{R_1 + R_{NTC\_Reg}}$$

where T<sub>Reg</sub> is the desired regulation temperature in degree Kelvin. R<sub>0</sub> is the nominal resistance at temperature T<sub>0</sub> and β is the temperature coefficient of the NTC thermistor. Req is the equivalent resistor of NTC thermistor in parallel with R<sub>1</sub>.

Figure 8 shows the equivalent resistance of the thermistor in parallel with R<sub>1</sub> resistor varies with operating temperature. Figure 9 shows the VTS voltage with operating temperature. Customer can select the desire temperature and calculate the mapping data by the following equation.

$$Data = (VST/2 \times 1024)$$

If the thermal management function is not used (R<sub>NTC</sub> = open), the resistor R1 = 24kΩ must be connected between the TS and GND pins. (or disable TS function in MTP)

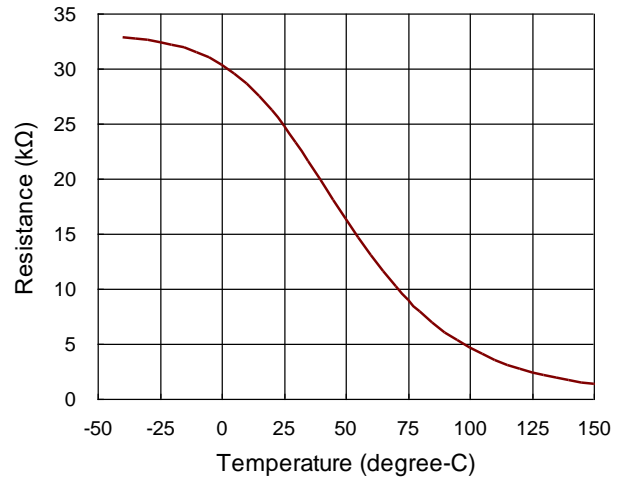


Figure 8. Equivalent Resistance for Temperature Sensing

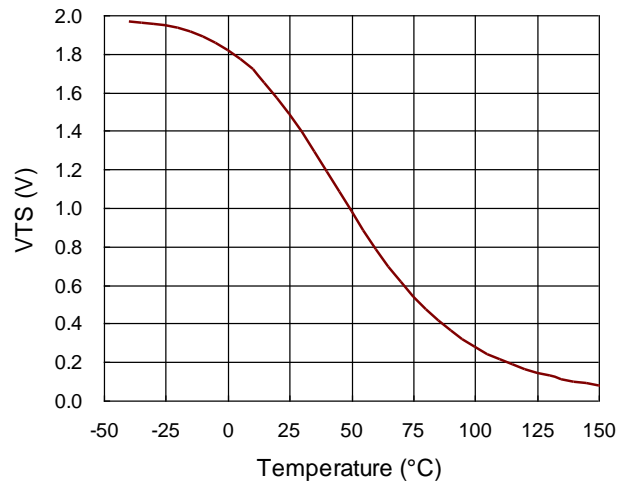


Figure 9. Thermal Sensing Voltage

**Communication**

The RT1652 supports two communication modulations, Amplitude Shift Keying (ASK), Frequency Shift Keying (FSK), to communicate with the power transmitter. For ASK modulation, the RT1652 provides two integrated communication N-FETs which are connected to the COM1 and COM2 pins. These N-FETs are used for modulating the secondary load current which allows the RT1652 to communicate Control Error and configuration information to the transmitter. Figure 10 shows the RT1652 operating with capacitive load modulation. When the N-FETs are turned-on, there is effectively a capacitor connected between AC1 and AC2. The impedance seen by the coil will be reflected



in the primary as a change in current.

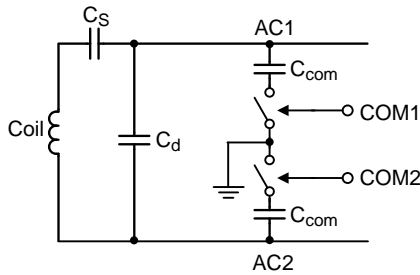


Figure 10. Capacitive Load Modulation

**Bit Encoding Scheme**

According to WPC protocol, the RT1652 uses a differential bi-phase encoding scheme to modulate data bits onto the Power Signal. The internal clock signal has a frequency 2kHz. The Receiver shall encode a ONE bit using two transitions in the Power Signal, such that the first transition coincides with the rising edge of the clock signal, and the second transition coincides with the falling edge of the clock signal. The Receiver shall encode a ZERO bit using a single transition in the Power Signal, which coincides with the rising edge of the clock signal. Figure 11 shows an example of the differential bi-phase encoding.

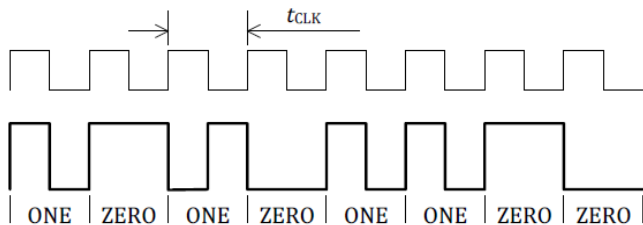


Figure 11. Example of the Differential Bi-phase Encoding

**End Power Transfer Packet (WPC Header 0x02)**

The End Power Transfer (EPT) packet is a special command for the RT1652 to request the transmitter to terminate power transfer. Table 2 specifies the reasons coulomb and their responding data field value. The condition column corresponds to the values sent by the RT1652 for a given reason.

**Table 2. End Power Transfer (EPT) packet**

Reason	Value	Condition
Under-Temperature	0x00	$V_{TS} > V_{TS\_COLD}$ or from I <sup>2</sup> C
Charge Complete	0x01	Charge done in battery mode
Over-Temperature	0x03	$V_{TS} < V_{TS\_HOT}$ or $T_J > 150^{\circ}C$

**I<sup>2</sup>C Interface**

The RT1652 provides I<sup>2</sup>C interface to communicate with external host device. Besides OTP firmware programming and MTP setting programming can be approached through the I<sup>2</sup>C interface, the external host can also communicate with the RT1652 to achieve more flexible applications. For example, the host can read the ADC information via the I<sup>2</sup>C Interface. In addition, the I<sup>2</sup>C is used to read the internal status and the power source is from the VRECT. If the wireless function disable or in the adapter mode, the I<sup>2</sup>C can't be accessed. Table 3 shows the register definition. It's not fixed, the registers definition can be costumed by firmware. If user need to read other information via I<sup>2</sup>C, please discuss with RICHTEK firmware engineer.

**I<sup>2</sup>C Slave**

0100100X (in binary format)

0x49 / 0x48 (hex format, include R/W bit)

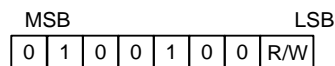


Table 3. RT1652 Register Definition

Address	MSB	LSB	Name	Description
0xD3 and 0xD7[1:0]	9	0	VRECT	VRECT (4V to 12V), unit = 19.0735mV
0xD4 and 0xD7[3:2]	9	0	IOUT	IOUT (0A to 1A), unit = 2mA
0xD5 and 0xD7[5:4]	9	0	VOUT	VOUT (4V to 12V), unit = 19.0735mV
0xD6 and 0xD7[7:6]	9	0	VTS	VTS (0V to 2V), unit = 2mV
0xD8	7	0	Control error packet	Depend on configuration setting
0xD9	7	0	Received power	Unit : 39.0625mW
0xDA and 0xDB[1:0]	9	0	VTJ	Unit : 0.42deg.
<b>Battery Charger Setting</b>				
0x0A	7	0	VRECT setting for short and pre-charge status	Unit : 38.15mV
0x10	7	0	Short circuit protection threshold voltage	Unit : 38.15mV
0x19	7	0	Current limit for pre-charge status	Unit : 8mA
0x11	7	0	Pre-charge threshold voltage	Unit : 38.15mV
0x1A	7	0	Current limit for short circuit status	Unit : 8mA
0x0B	7	0	VRECT setting for constant current mode	Unit : 38.15mV
0x17	7	0	Current limit for constant current mode status	Unit : 8mA
0x16	7	0	Full battery voltage setting	Unit : 48mV
0x0C	7	0	VRECT setting for full battery mode	Unit : 38.15mV
0x12	7	0	Termination current setting	Unit : 8mA

### Indicator Output

An open-drain output pin, CHG, is provided to indicate the status of wireless power receiver. The CHG pin can be connected to a LED for charge status indicator. When the output of the RT1652 is enabled, the open-drain N-FET at CHG pin will be pulled to low level.

### Input Over-Voltage Protection

When the input voltage increases suddenly, the RT1652 adjusts voltage-control loop to maintain regulator output voltage and sends control error packets to the transmitter every 30ms until the input voltage comes back to the VRECT target level (refer to Dynamic Rectifier Voltage Control Section). Once the

VRECT voltage exceeds its over-voltage threshold (11.5V typ.), the RT1652 turns on the N-FETs at CLMP1 and CLMP2 pins to shunt the input current through external capacitors. By the way the CLAMP function may affect the communication signal to let the Tx re-start up.

### Over-Temperature Protection

The RT1652 provides an Over-Temperature Protection (OTP) feature to prevent excessive power dissipation from overheating the device. The OTP function shuts down the linear regulator operation when the junction temperature exceeds 150°C. Once the junction temperature cools down by around 20°C, the receiver will automatically resume operating.

**Foreign Object Detection**

The RT1652 is a WPC 1.1.1 compatible device. In order to enable a power transmitter to monitor the power loss across the interface as one of the possible methods to limit the temperature rise of foreign objects, the RT1652 reports its received power to the power transmitter. The received power equals the power that is available from the output of the power receiver plus any power that is lost in producing that output power (the power loss in the secondary coil and series resonant capacitor, the power loss in the shielding of the power receiver, the power loss in the rectifier). In WPC1.1.1 specification, Foreign Object Detection (FOD) is enforced. This means the RT1652 will received power information with known accuracy to the transmitter. The received power is sensed as the Figure 12.

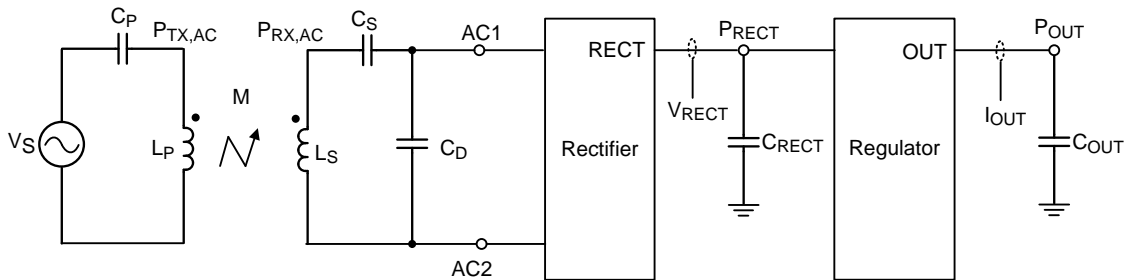


Figure 12. Received Power Sensing

**Battery Charger Setting and Description**

The RT1652 is linear-mode battery charger for portable application. It integrates current regulation and voltage regulation for every charging status. The charging status include short, pre-charging, constant current, constant voltage and end of charging mode.

Section I (Short protection, Short) : If battery voltage is lower than threshold of short voltage (depend on user setting. 0x10), then the current limit (depend on user setting. 0x1A) is set to short protection level automatically.

Section II (Pre-charge function, Pre-charge) : If battery voltage is lower than threshold of pre-charge (depend on user setting. 0x11), then the current limit (depend on user setting. 0x19) is set to pre-charging current level automatically.

Section III (Constant current mode, CC) : If battery voltage is higher than threshold of pre-charge (depend on user setting. 0x11), then the current limit (depend on user setting. 0x17) is set to constant current mode level automatically.

Section IV (Constant voltage mode, CV) : Full battery voltage setting (depend on user setting. 0x16)

Section V (End of charge mode, EOC) : RT1652 will sent end of power if battery current is lower than

termination current.

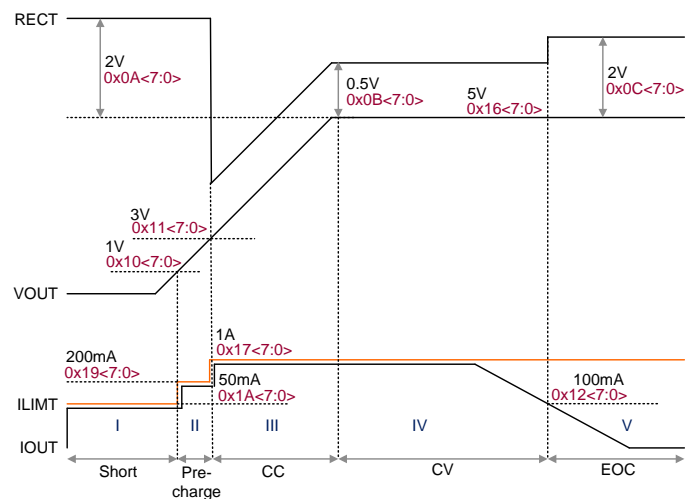


Figure 13. Battery Charge Behavior

**Battery Charge Complete Detection**

The RT1652 supports battery charge complete detection function. A programmable charge complete current threshold and a programmable charge complete delay time are provided. This function can be used to send the Charge Status packet (0x05) to the transmitter for indicating a full charged status 100%. Note that this packet does not turn off the transmitter. The charge complete current threshold is adjustable from 0mA to 255mA and the default value is 50mA. The

charge complete time is also adjustable from 0 seconds to 2550 seconds and the default value is 180 seconds.

There are 3 operation modes when the charge complete status is detected. The first mode is to send a CS packet (0x05) to transmitter only. The CS packet does not turn off the transmitter. In the second mode, the RT1652 will send a CS packet (0x05) and an EPT packet to transmitter. In the third mode, the RT1652 will send a CS packet (0x05) and stop communication with the transmitter.

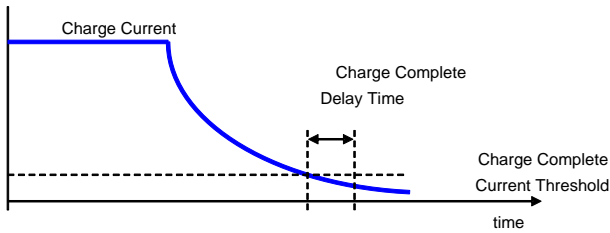


Figure 14. Battery Charge Complete Detection

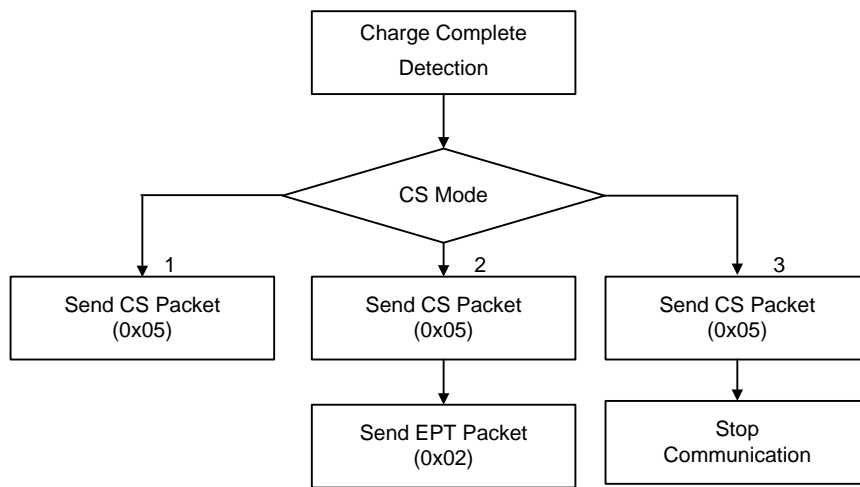


Figure 15. Operation Modes of Charge Complete Detection

**Receiver Coil and Resonant Capacitors**

According to WPC specification, the dual resonant circuit of the power receiver comprises the receiver coil and capacitors C1 and C2. The receiver coil design is related to system design. Coil shape, material, inductance and shielding need to be considered. Shielding provides protection from interference between wireless power system and mobile electronic device. The recommended coil self-inductance is between 8μH to 13μH. The capacitance of the resonant capacitors can be calculated by the following equations.

$$C1 = \frac{1}{L'_S \times (2\pi f_s)^2}$$

$$C2 = \frac{1}{L_S \times (2\pi f_d)^2 - \frac{1}{C1}}$$

In these equations, fs is resonant frequency with typical value 100kHz; and fd is another resonant frequency with typical value 1000kHz. L's is coil self-inductance when placed on the interface surface of a transmitter; and Ls is the self-inductance when placed away from the transmitter.

**Firmware Setting**

Please refer to another document for detailed description of firmware setting.

**Thermal Considerations**

The junction temperature should never exceed the absolute maximum junction temperature  $T_{J(MAX)}$ , listed under Absolute Maximum Ratings, to avoid permanent damage to the device. The maximum allowable power dissipation depends on the thermal resistance of the IC package, the PCB layout, the rate of surrounding airflow, and the difference between the junction and ambient temperatures. The maximum power dissipation can be calculated using the following formula :

$$P_{D(MAX)} = (T_{J(MAX)} - T_A) / \theta_{JA}$$

where  $T_{J(MAX)}$  is the maximum junction temperature,  $T_A$  is the ambient temperature, and  $\theta_{JA}$  is the junction-to-ambient thermal resistance.

For continuous operation, the maximum operating junction temperature indicated under Recommended Operating Conditions is 125°C. The junction-to-ambient thermal resistance,  $\theta_{JA}$ , is highly package dependent. For a WL-CSP-36B 2.8x2.6 (BSC) package, the thermal resistance,  $\theta_{JA}$ , is 30°C/W on a standard JEDEC 51-7 high effective-thermal-conductivity four-layer test board. The maximum power dissipation at  $T_A = 25^\circ\text{C}$  can be calculated as below :

$$P_{D(MAX)} = (125^\circ\text{C} - 25^\circ\text{C}) / (30^\circ\text{C}/\text{W}) = 3.33\text{W for a WL-CSP-36B 2.8x2.6 (BSC) package.}$$

The maximum power dissipation depends on the operating ambient temperature for the fixed  $T_{J(MAX)}$  and the thermal resistance,  $\theta_{JA}$ . The derating curves in Figure 16 allows the designer to see the effect of rising ambient temperature on the maximum power dissipation.

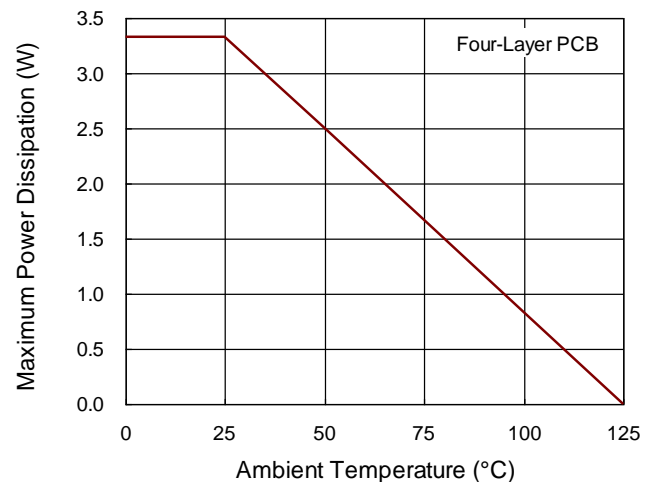


Figure 16. Derating Curve of Maximum Power Dissipation

**Layout Considerations**

Follow the PCB layout guidelines for optimal performance of the IC.

- ▶ Keep the traces of main current paths as short and wide as possible.
- ▶ Place the capacitors as close as possible to the IC.
- ▶ Power ground should be as large as possible and connected to a power plane for thermal dissipation.

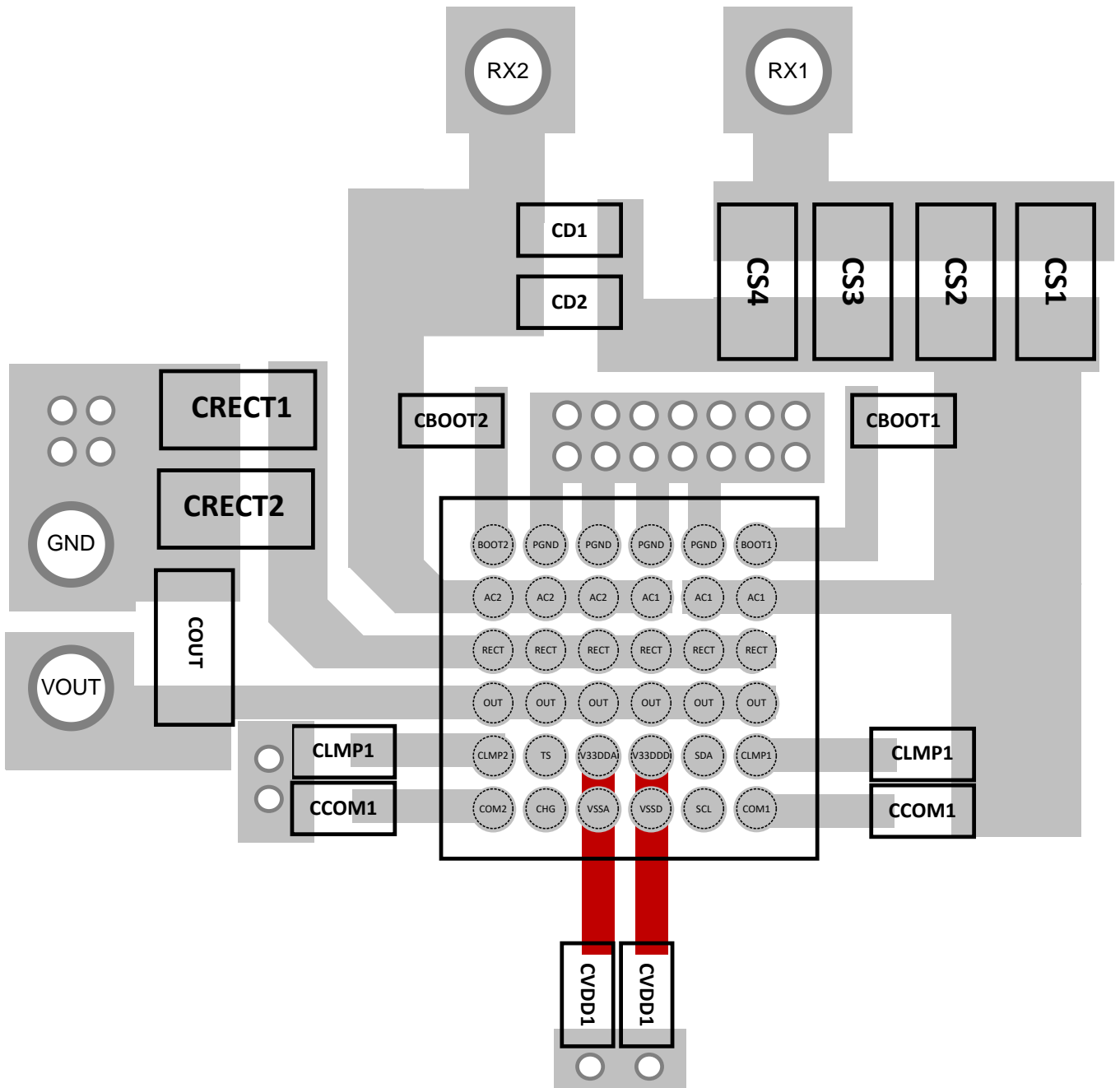
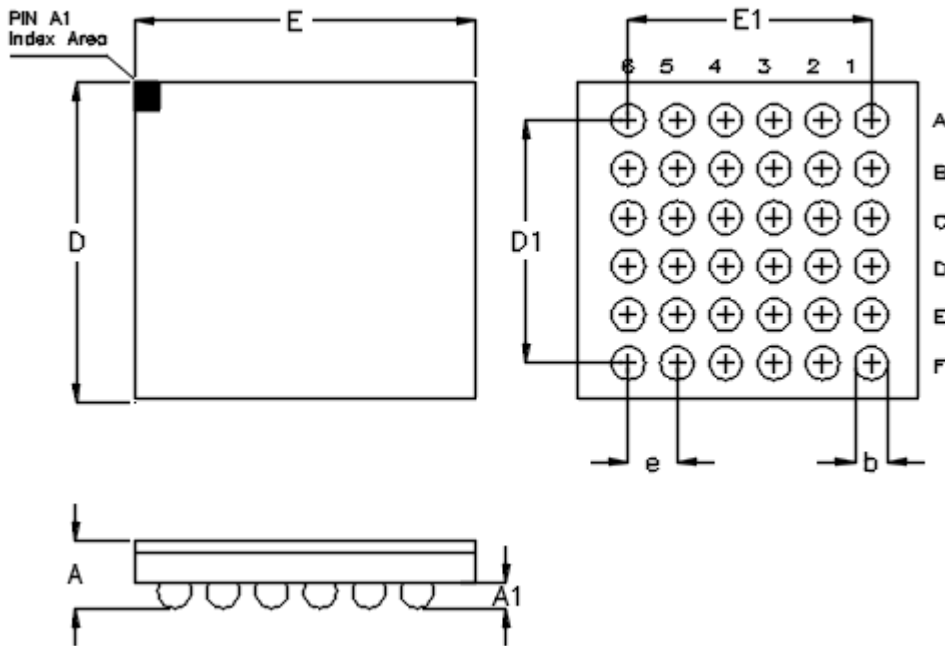


Figure 17. PCB Layout Guide

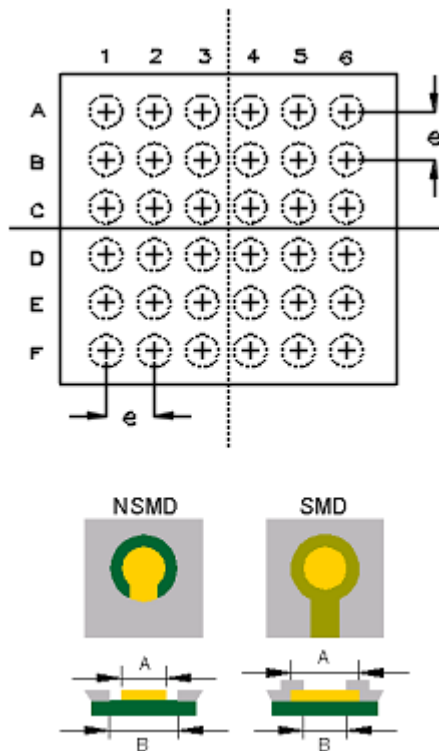
**Outline Dimension**



Symbol	Dimensions In Millimeters		Dimensions In Inches	
	Min	Max	Min	Max
A	0.500	0.600	0.020	0.024
A1	0.170	0.230	0.007	0.009
b	0.240	0.300	0.009	0.012
D	2.750	2.850	0.108	0.112
D1	2.000		0.079	
E	2.550	2.650	0.100	0.104
E1	2.000		0.079	
e	0.400		0.016	

**36B WL-CSP 2.8x2.6 Package (BSC)**

Footprint Information



Package	Number of Pin	Type	Footprint Dimension (mm)			Tolerance
			e	A	B	
WL-CSP2.8*2.6-36(BSC)	36	NSMD	0.400	0.240	0.340	±0.025
		SMD		0.270	0.240	

Richtek Technology Corporation

14F, No. 8, Tai Yuen 1<sup>st</sup> Street, Chupei City  
 Hsinchu, Taiwan, R.O.C.  
 Tel: (8863)5526789

Richtek products are sold by description only. Richtek reserves the right to change the circuitry and/or specifications without notice at any time. Customers should obtain the latest relevant information and data sheets before placing orders and should verify that such information is current and complete. Richtek cannot assume responsibility for use of any circuitry other than circuitry entirely embodied in a Richtek product. Information furnished by Richtek is believed to be accurate and reliable. However, no responsibility is assumed by Richtek or its subsidiaries for its use; nor for any infringements of patents or other rights of third parties which may result from its use. No license is granted by implication or otherwise under any patent or patent rights of Richtek or its subsidiaries.

Copyright © 2022 Richtek Technology Corporation. All rights reserved. RICHTEK is a registered trademark of Richtek Technology Corporation.



**Datasheet Revision History**

<b>Version</b>	<b>Date</b>	<b>Description</b>	<b>Item</b>
03	2022/12/5	Modify	Features on P1 Functional Description on P13