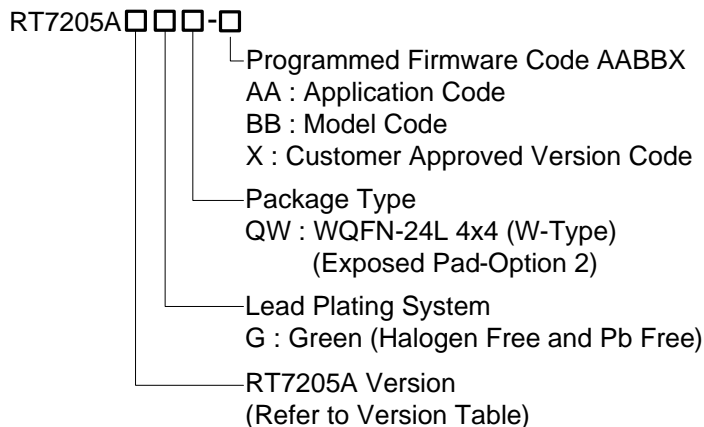


## Programmable SMPS and USB Type-C Controller

### General Description

The RT7205A is a highly integrated and programmable SMPS controller at the secondary side. It provides the necessary functions and protections for high efficient and high power density off-line AC-DC converter designs. The RT7205A integrates an MCU to handle various proprietary protocols (e.g., FCP, SCP and AFC) through D+/D- interface and also support USB Type-C via CC1/CC2 pins. An internal synchronous rectifier controller can optimize efficiency and provide safe operate in both continuous-conduction mode (CCM) and discontinuous-conduction mode (DCM) even in the condition of a wide output voltage range of 3V to 12V. Dual operational amplifiers with respectively programmable reference voltages are included for voltage-loop and current-loop regulation to provide programmable constant-voltage (CV) and constant-current (CC) regulation in high precision.

### Ordering Information



Note :

Richtek products are :

- ▶ RoHS compliant and compatible with the current requirements of IPC/JEDEC J-STD-020.
- ▶ Suitable for use in SnPb or Pb-free soldering processes.

### Features

- **Protocols Supported**
  - ▶ SCP, FCP, AFC and Proprietary Protocols
  - ▶ USB Type-C
- **Highly Integrated**
  - ▶ Embedded MCU with an Mask-ROM of 16kB, an OTP-ROM of 8kB, and an SRAM of 0.75kB
  - ▶ Built-in Synchronous Rectifier Driver and Controller
  - ▶ Built-in Charge Pump for a Wide V<sub>DD</sub> Operation Range of 3V to 12V
  - ▶ Built-in Shunt Regulator for Programmable Constant-Voltage and Constant-Current Control
  - ▶ Programmable Cable Compensation
  - ▶ BLD Pin for Quick Discharge of Output Capacitor
  - ▶ USBP Pin for Direct Drive of External Blocking N-MOSFET
  - ▶ Power-Saving Mode in Standby Mode
- **Protection**
  - ▶ Adaptive Over-Voltage Protection
  - ▶ Adaptive Under-Voltage Protection
  - ▶ Firmware-Programmable Over-Current Protection
  - ▶ Firmware-Programmable Over-Temperature Protection

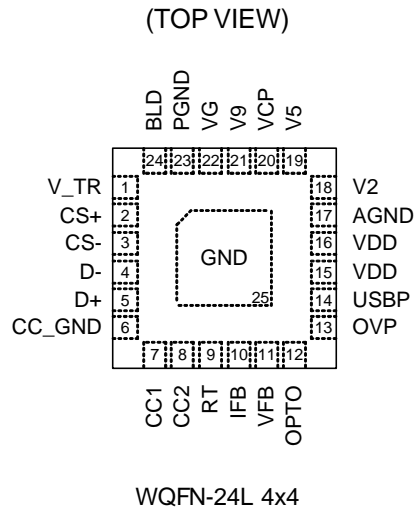
### Applications

- Travel Adaptors with Fast Charge Protocols (e.g., FCP, SCP and AFC)
- Travel Adaptors with USB Type-C Control (e.g., 5V/1.5A and 5V/3A)

### Marking Information

For marking information, contact our sales representative directly or through a Richtek distributor located in your area.

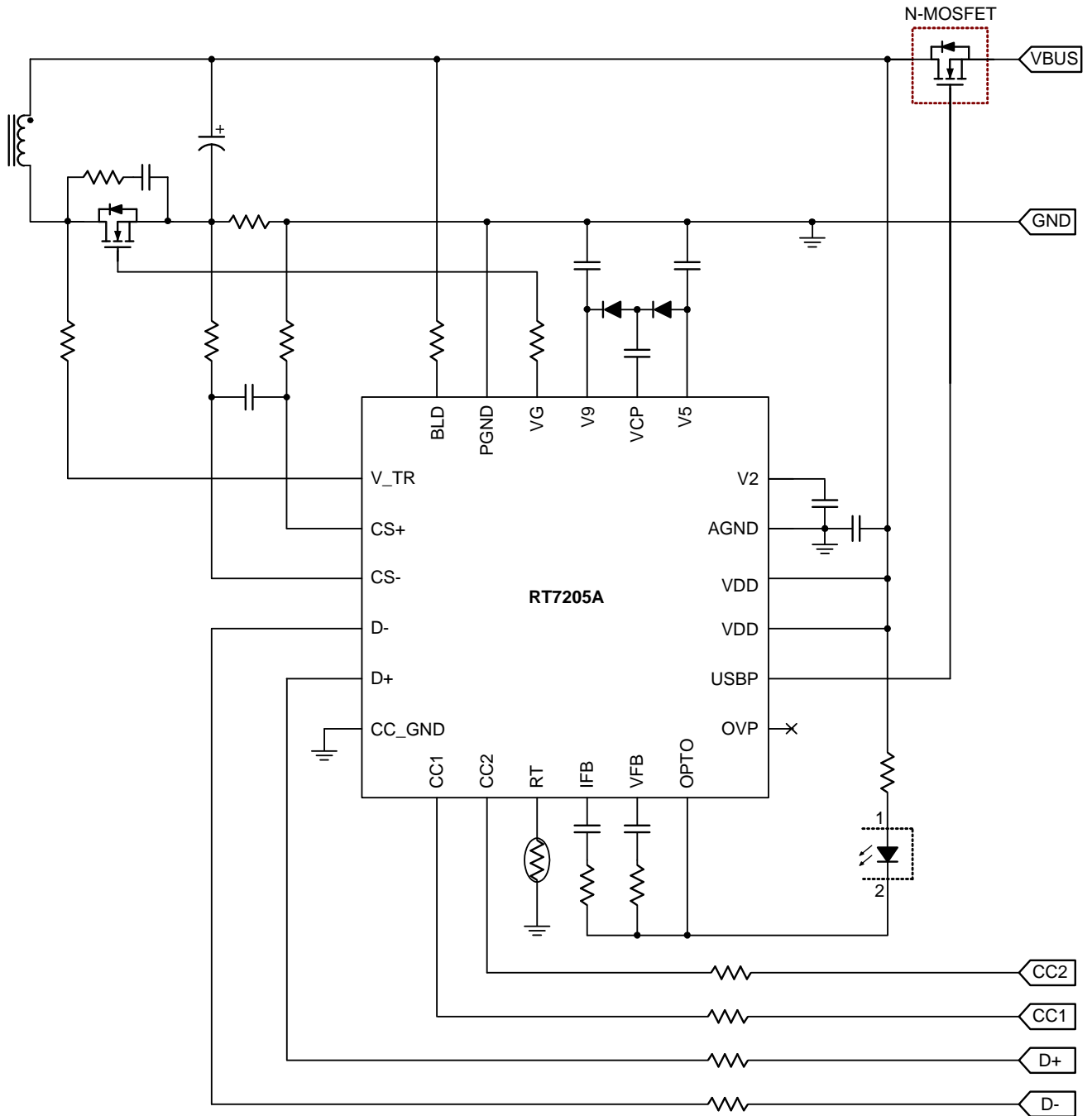
## Pin Configuration



## RT7205A Version Table

Version	RT7205A	RT7205AL
Maximum Output Voltage	12V	5V
V <sub>DS</sub> SCALE $R_{VDS2} / (R_{VDS1} + R_{VDS2})$	1/26	1/13
V <sub>OUT</sub> SCALE $R_{FB2} / (R_{FB1} + R_{FB2})$	1/5	1/2.5
Built-in FB Resistors	O	O
Blocking MOSFET Driver	N-MOSFET	N-MOSFET

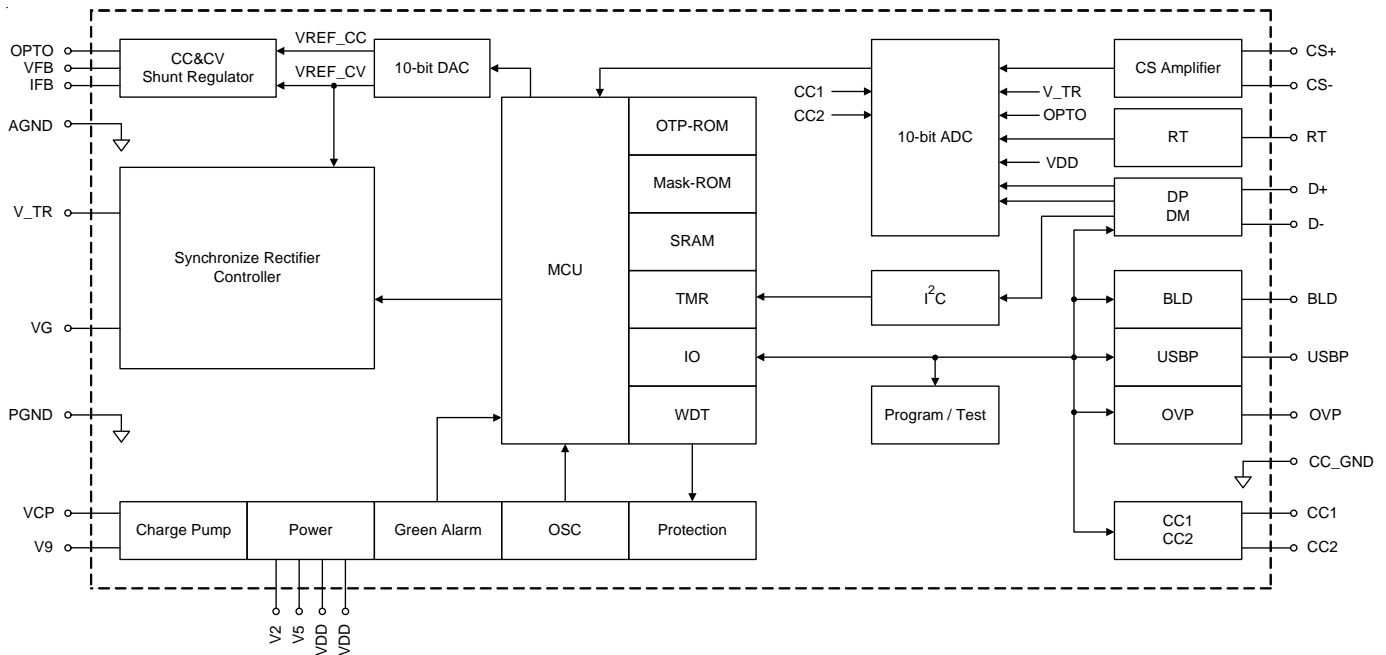
**Simplified Application Circuit**



**Functional Pin Description**

Pin No.	Pin Name	Type	Pin Function
1	V_TR	AI	Transformer voltage sense node.
2	CS+	AI	Positive input of a current-sense amplifier for output current sensing.
3	CS-	AI	Negative input of a current-sense amplifier for output current sensing.
4	D-	A/D IO	USB D- channel.
5	D+	A/D IO	USB D+ channel.
6	CC_GND	GND	Alternative ground for CC1 and CC2.
7	CC1	A/D IO	Type-C connector Configuration Channel (CC) 1, used to detect a cable plug event and determine the cable orientation.
8	CC2	A/D IO	Type-C connector Configuration Channel (CC) 2, used to detect a cable plug event and determine the cable orientation.
9	RT	A/D I	Remote thermal sensor connection node for over-temperature protection.
10	IFB	AI	Feedback input for the constant-current loop.
11	VFB	AI	Feedback input for the constant-voltage loop.
12	OPTO	AO	Current sink output for optocoupler connection.
13	OVP	AO	Over-voltage fault indication output, used to pull low an optocoupler.
14	USBP	D IO	Control signal of the blocking N-MOSFET
15	VDD	PWR	Supply input voltage.
16	VDD	PWR	Supply input voltage.
17	AGND	GND	Analog ground.
18	V2	PWR	Regulated DC bias to supply for the MCU.
19	V5	PWR	Regulated DC bias to supply for internal circuitry.
20	VCP	AO	Charge pump driver output.
21	V9	PWR	Regulated DC bias to supply for the synchronous rectifier driver.
22	VG	AO	Gate driver output for the SR MOSFET.
23	PGND	GND	Power ground.
24	BLD	D IO	Bleeder connection node to provide another path to discharge the output capacitor.
25 (Exposed Pad)	GND	GND	Power ground. The exposed pad must be connected to GND and well soldered to a large PCB copper area for maximum power dissipation.

## Functional Block Diagram



## Operation

The RT7205A is a highly integrated secondary-side programmable SMPS and USB Type-C controller with various functions and protections for off-line AC-DC converters.

### Power Structure

Biased by the VDD pin, the RT7205A has two regulated DC output voltages,  $V_5$  and  $V_2$ , to supply the internal circuit and the internal microprocessor (MCU). The bypass capacitors at the V2 and V5 pins are required to improve stability of the internal LDO and to minimize regulated ripple voltages. The RT7205A also integrates a charge pump to generate a boost voltage  $V_9$  from  $V_5$  with VCP pin for capacitor connection so that the V9 voltage can be nearly 2 times of the V5 voltage and the VG pin can directly drive the SR MOSFET. Besides, the charge pump allows the controller to operate under low supply voltage condition as long as the output voltage is not below the programmed UVP level.

### Constant-Voltage and Constant-Current (CV/CC) Regulators

Two regulators are paralleled and connected to an open-drain output, OPTO pin. The operation of each feedback loop is similar to that of the traditional TL431 shunt regulator except that  $V_{OPTO}$  operating range is wider, from 0.3V to 16.5V, which enables easy design of converters with a wider output range. The OPTO pin will be in high-impedance state, if the VDD voltage is still below a UVLO threshold  $V_{VDD\_ON}$ , which ensures a smooth power-on sequence. The reference voltages,  $V_{REF\_CV}$  and  $V_{REF\_CC}$ , for the voltage and current feedback loops, respectively, are analog output voltages from the embedded DAC, and their digital counterparts are from the MCU. The analog output range of the 10-bit DAC is from 0 to  $V_{DAC\_MAX}$  (typical 2.7V), which makes output voltage resolution as small as 13.2mV and 6.6mV for the RT7205A and RT7205AL, respectively, to achieve high-precision CV regulation.

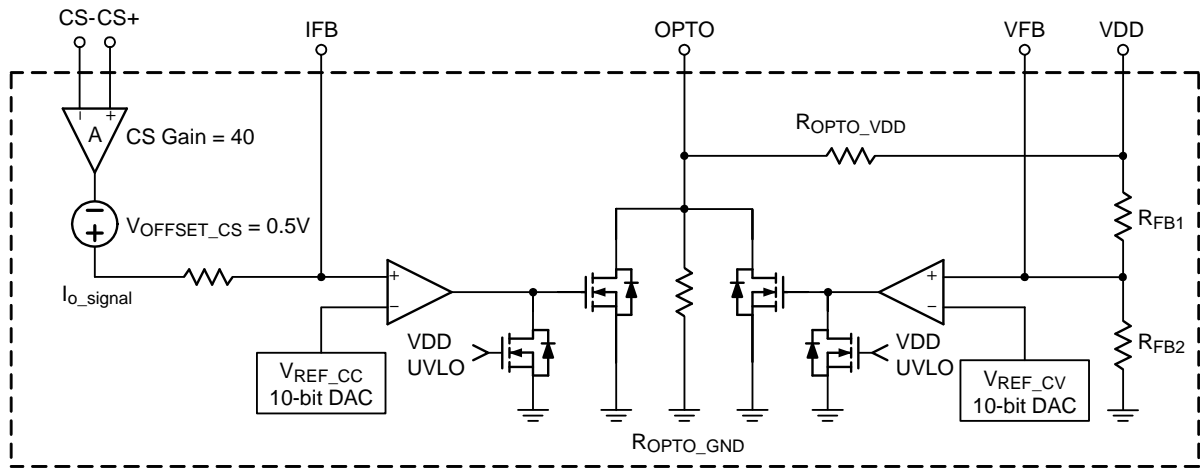


Figure 1. CV and CC Loops

**Current-Sense Amplifier**

To minimize power loss of the current sense resistor in the converter, the RT7205A includes an amplifier with virtually zero input offset voltage and with a voltage gain of 40. The sensed output current is amplified by the current-sense amplifier, shown as "Io\_signal" in Figure 1, which is then sent to the current-loop regulator for constant-current regulation and also sent to the MCU, by way of an 10-bit ADC for analog-to-digital conversion, to update the output current status for the MCU.

**External Temperature Sensing**

The RT7205A provides the RT pin, as a register-programmable current source to bias a remote thermal sensor, such as a thermistor (NTC), as shown in Figure 2. If the RT voltage is below an over-temperature protection (OTP) threshold and the condition sustains for a programmed time delay, the OTP will be triggered.

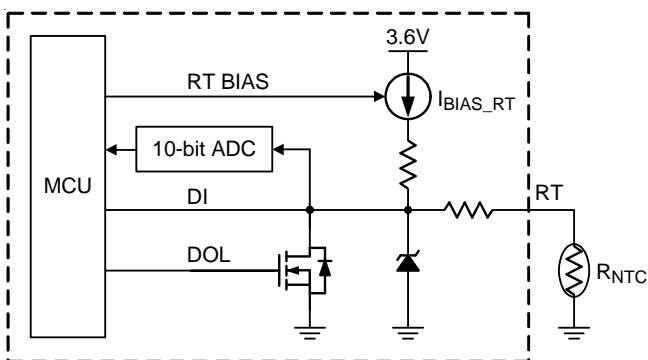


Figure 2. External Temperature Sensing

**Interface of D+ and D-**

The D+ and D- pins are used for BC1.2 compliance or for communication with other proprietary protocols. The D+ and D- pins, connected to the MCU via an ADC, can be reprogrammed for other purposes since they can be used as an analog/digital input or output.

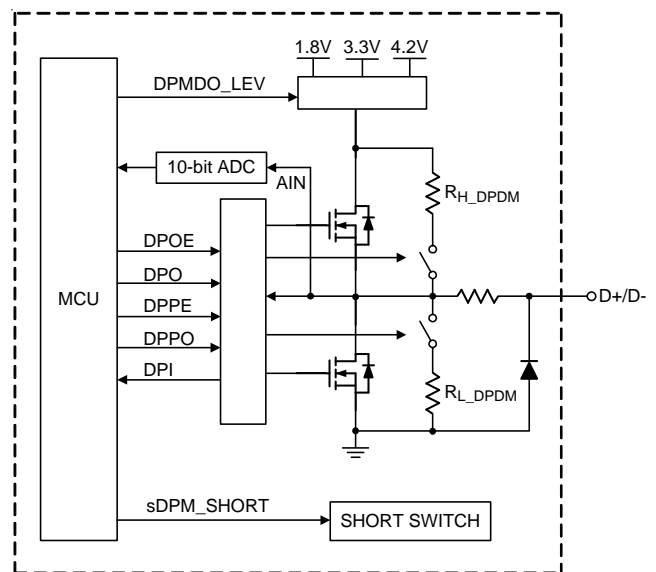


Figure 3. Interface of D+ and D-

**Interface of CC1 and CC2**

The CC1 and CC2 pins are used for compliance with USB Type-C specification. When configured as a Downstream Facing Port (DFP), three current capabilities of 80µA, 180µA, and 330µA, provided by each of the CC pins, will

be advertised to an Upstream Facing Port (UFP) as default USB current, 1.5A, and 3.0A, respectively.

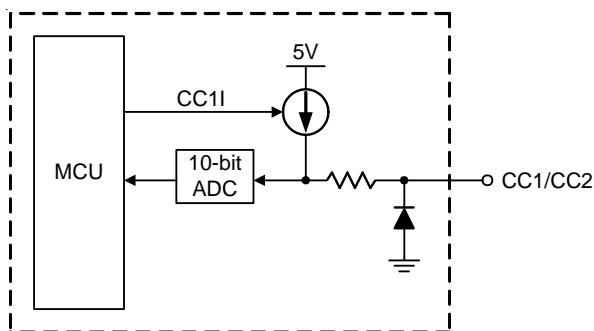


Figure 4. Interface of CC1 and CC2

**Open-Drain Drivers for BLD and OVP Pins**

The BLD and OVP pins with their specific functions are driven by open-drain drivers, as shown in Figure 5 and explained below.

The BLD pin is used as a bleeder to help discharge the output capacitor to  $V_{safe5V}$  upon the detachment of a connected device, or to a lower desired output voltage level upon a UFP request, such as from 12V to 5V. A resistor is connected between  $V_{OUT}$  and the BLD pin and a power resistor can be used for better power dissipation capability.

The OVP pin is pulled low when output over-voltage condition (register-programmable : 115%, 120%, 125%) occurs. By way of an optocoupler, it can shut down the primary-side controller (for example, RT7752).

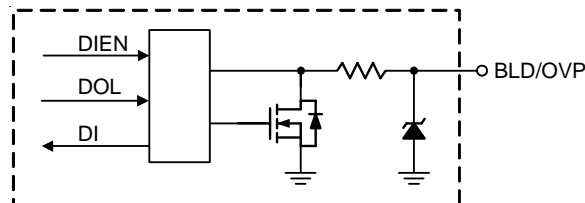


Figure 5. Interface of BLD and OVP Pins

**SR Control**

To improve the AC-DC converter's efficiency, the RT7205A includes a SR controller, which has proprietary auto-tracking function to minimize dead time between the conduction intervals of the SR MOSFET and the main switch MOSFET, while it can still ensure safe operation in both DCM and CCM conditions and even in a wide output range. To prevent the on-time overlap of the main switch MOSFET and the SR MOSFET, the SR controller will be temporarily turned off under conditions of load transition, output voltage transition, output short circuit, or low output or input voltages with programmable thresholds. At light load or no load condition, the SR controller will also be disabled to reduce power consumption.

**Absolute Maximum Ratings** (Note 1)

- USBP to GND ----- -0.3V to 25V
- VDD, OPTO, BLD, OVP to GND ----- -0.3V to 16.5V
- V9, VG to GND ----- -0.3V to 13V
- V5, VCP, VFB, IFB, V\_TR, RT, CC1, CC2, D+, D-, CS+, CS- to GND ----- -0.3V to 6.5V
- V2 to GND ----- -0.3V to 2.5V
- Power Dissipation, P<sub>D</sub> @ T<sub>A</sub> = 25°C
  - WQFN-24L 4x4 ----- 3.57W
- Package Thermal Resistance (Note 2)
  - WQFN-24L 4x4, θ<sub>JA</sub> ----- 28°C/W
  - WQFN-24L 4x4, θ<sub>JC</sub> ----- 7.1°C/W
- Lead Temperature (Soldering, 10 sec.) ----- 260°C
- Junction Temperature ----- 150°C
- Storage Temperature Range ----- -65°C to 150°C
- ESD Susceptibility (Note 3)
  - HBM (Human Body Model) ----- 2kV

**Recommended Operating Conditions** (Note 4)

- Supply Input Voltage, VDD ----- 3V to 13V
- Junction Temperature Range ----- -40°C to 125°C
- Ambient Temperature Range ----- -40°C to 85°C

**Electrical Characteristics**

(T<sub>A</sub> = 25°C, unless otherwise specified)

Parameter	Symbol	Test Conditions	Min	Typ	Max	Unit
<b>VDD Section</b>						
VDD Turn-On Threshold Voltage	V <sub>VDD_ON</sub>		2.9	3.0	3.1	V
VDD Turn-Off Threshold Voltage	V <sub>VDD_OFF</sub>		2.55	2.7	2.85	V
VDD Turn-On/-Off Hysteresis	V <sub>VDD_HYS</sub>		--	0.3	--	V
VDD Start-Up Current	I <sub>DD_START</sub>	V <sub>DD</sub> = 2.6V	--	200	300	μA
VDD Operating Current	I <sub>DD_OP</sub>	SR driver is disabled	--	10	--	mA
VDD Sleep-Mode Current	I <sub>DD_SLEEP</sub>	In sleep mode	--	900	--	μA
VDD Over-Voltage Protection Threshold Voltage	V <sub>VDD_OVP</sub>		14.5	15.5	16.5	V
VDD Over-Voltage Protection Threshold Voltage for Disable SR Driver	V <sub>VDD_OVP_SR</sub>	With respect to V <sub>REF_CV</sub>	104.5	110	115.5	%
VDD Over-Voltage Protection Deglitch Time	t <sub>D_VDDOVP</sub>	(Note 5)	--	50	--	μs
MCU Operating Frequency	f <sub>OSC_MCU</sub>	V <sub>DD</sub> = 5V	20.5	21.6	22.7	MHz



Parameter	Symbol	Conditions	Min	Typ	Max	Unit
<b>Internal Bias</b>						
V5 Bias	V <sub>BIAS_V5</sub>	6V < V <sub>DD</sub> < 16.5V	4.75	5	5.25	V
V5 Load Regulation		1mA < I <sub>BIAS_V5</sub> < 30mA	--	--	150	mV
V5 Output Short Circuit Current	I <sub>V5_SC</sub>		60	90	120	mA
V2 Bias	V <sub>BIAS_V2</sub>	3V < V <sub>DD</sub> < 16.5V	1.71	1.8	1.89	V
V2 Load Regulation		1mA < I <sub>BIAS_V2</sub> < 20mA	--	--	20	mV
V2 Output Short Circuit Current	I <sub>V2_SC</sub>		30	50	70	mA
<b>Regulator Section</b>						
Internal Resistor between VFB and VDD	R <sub>FBI1</sub>	For RT7205A	64	80	96	kΩ
		For RT7205AL	24	30	36	
Internal Resistor between VFB and GND	R <sub>FBI2</sub>		16	20	24	kΩ
V <sub>OUT</sub> Scaling Factor	K <sub>VOUT</sub>	(R <sub>FBI1</sub> + R <sub>FBI2</sub> ) / R <sub>FBI2</sub> For RT7205A	4.95	5	5.05	--
		(R <sub>FBI1</sub> + R <sub>FBI2</sub> ) / R <sub>FBI2</sub> For RT7205AL	2.475	2.5	2.525	
Default Reference Voltage for CV Regulators	V <sub>REF_CV_ST</sub>	For RT7205A	0.97	1	1.03	V
		For RT7205AL	1.94	2	2.06	
Register -Programmable Default Reference Voltage for CC Regulators	V <sub>REF_CC_ST</sub>	0	0.72	0.8	0.88	V
		1	0.99	1.1	1.21	
Maximum DAC Output Voltage for CV Regulators	V <sub>REF_CV_MAX</sub>	With 10-bit Digital to Analog Converter	2.67	2.70	2.73	V
Maximum DAC Output Voltage for CC Regulators	V <sub>REF_CC_MAX</sub>	With 10-bit Digital to Analog Converter	2.67	2.70	2.73	V
Maximum ADC Sense Voltage	V <sub>ADC_MAX</sub>	10-bit A/D conversion	2.67	2.70	2.73	V
Ratio of Change in Reference Input Voltage to Change in OPTO Voltage	$\frac{\Delta V_{REF}}{\Delta V_{OPTO}}$	$\Delta V_{OPTO} = 16.5V$ to V <sub>REF</sub> (Note 5)	-2.4	-1.2	--	mV/V
Reference Input Current	I <sub>REF</sub>	(Note 5)	--	0.1	--	μA
Off-State OPTO Current	I <sub>OPTO_OFF</sub>	OPTO pin is open-circuited (Note 5)	--	230	500	nA
Dynamic Impedance	Z <sub>OPTO</sub>	V <sub>OPTO</sub> = V <sub>REF</sub> , I <sub>OPTO</sub> = 1mA, f < 1kHz (Note 5)	--	0.22	0.5	Ω
OPTO Turn-On Impedance	R <sub>ON_OPTO</sub>	I <sub>OPTO_SINK</sub> = 20mA	--	--	200	Ω
Maximum OPTO Sinking Current	I <sub>OPTO_MAX</sub>		2	--	20	mA
Internal Resistor between OPTO and VDD	R <sub>OPTO_VDD</sub>		40.8	51	61.2	kΩ
Internal Resistor between OPTO and GND	R <sub>OPTO_GND</sub>		50	60	70	kΩ

Parameter	Symbol	Conditions	Min	Typ	Max	Unit	
<b>Current Sense Amplifier</b>							
Current-Sense Voltage Gain	KCS		--	40	--	V/V	
Current-Sense Amplifier Output Offset Voltage	V <sub>OFFSET_CS</sub>		--	0.5	--	V	
Unit Gain Bandwidth		(Note 5)	1000	--	--	kHz	
Output Current		(Note 5)	--	0.1	--	mA	
<b>Charge Pump Section</b>							
Charge Pump Operating Frequency	f <sub>CP</sub>		150	170	190	kHz	
Rise Time	t <sub>R_CP</sub>	C <sub>L</sub> = 6nF, V <sub>5</sub> = 5V, from 20% to 80%	70	140	210	ns	
Fall Time	t <sub>F_CP</sub>	C <sub>L</sub> = 6nF, V <sub>5</sub> = 5V, from 80% to 20%	60	110	160	ns	
Charge Pump Driver Impedance	R <sub>OUT_CP</sub>	(Note 5)	--	--	10	Ω	
Debounce Time	t <sub>D_V9</sub>	(Note 5)	--	50	--	μs	
V9 Turn-On Threshold Voltage	V <sub>V9_ON</sub>		3.1	3.3	3.5	V	
V9 Turn-Off Threshold Voltage	V <sub>V9_OFF</sub>	If V <sub>9</sub> < V <sub>V9_OFF</sub> , the V9 internal circuit will be inactivated.	2.9	3.1	3.3	V	
<b>RT Section</b>							
Open-Loop Voltage	V <sub>RT_OP</sub>	V <sub>DD</sub> = 5V	3.2	3.6	4	V	
Register-Programmable Internal Bias Current	I <sub>BIAS_RT</sub>		00	90	100	110	μA
			01	18	20	22	
			10	3.6	4	4.4	
			11	Open			
<b>OVP Section</b>							
Maximum OVP Sinking Current	I <sub>OVP_MAX</sub>		2	--	20	mA	
Pull-Low Impedance	R <sub>L_OVP</sub>	I <sub>OVP_MAX</sub> = 20mA	--	--	200	Ω	
Register-Programmable Over-Voltage Protection Threshold	V <sub>VOUT_OVP</sub>	With respect to V <sub>REF_CV</sub>	00	109.25	115	120.75	%
			01	114	120	126	
			10	118.75	125	131.25	
			11	Disable			
Debounce Time	t <sub>D_VOUTOVP</sub>	OVP pin is latched till VDD is below V <sub>VDD_OFF</sub>	--	50	--	μs	
<b>BLD Section</b>							
Maximum BLD Sinking Current	I <sub>BLD_MAX</sub>	V <sub>BLD</sub> = 12V, I <sub>n</sub> 300ms (Note 5)	0.2	--	0.7	A	
Pull-Low Impedance	R <sub>L_BLD</sub>	I <sub>BLD</sub> = 50mA	--	--	30	Ω	

Parameter	Symbol	Conditions	Min	Typ	Max	Unit	
<b>D+, D- Section</b>							
Pull-High Resistance	R <sub>H_DPDM</sub>		10	12.5	15	kΩ	
Pull-Low Resistance	R <sub>L_DPDM</sub>		15	20	25	kΩ	
Register-Programmable Output High Voltage	V <sub>OH_OP</sub>	V <sub>DD</sub> = 5V, R <sub>L</sub> = 15kΩ	00	Open Drain			V
	V <sub>OH_3.3V</sub>		01	2.97	3.3	3.63	
	V <sub>OH_1.8V</sub>		10	1.62	1.8	1.98	
	V <sub>OH_4.2V</sub>		11	3.78	4.2	4.62	
Output Low Voltage	V <sub>OL_OP</sub>	R <sub>L</sub> = 15kΩ				V	
	V <sub>OL_3.3V</sub>			--	--		0.2
	V <sub>OL_1.8V</sub>						
	V <sub>OL_4.2V</sub>						
Register-Programmable DP and DM Input Level	V <sub>IN_LEV</sub>		0	--	0	--	V
			1	--	0.4	--	
Register-Programmable Input High Trip Voltage	V <sub>IH_DPDM</sub>		00	1.1 + V <sub>IN_LEV</sub>	1.2 + V <sub>IN_LEV</sub>	1.3 + V <sub>IN_LEV</sub>	V
			01	1.2 + V <sub>IN_LEV</sub>	1.3 + V <sub>IN_LEV</sub>	1.4 + V <sub>IN_LEV</sub>	
			10	1.3 + V <sub>IN_LEV</sub>	1.4 + V <sub>IN_LEV</sub>	1.5 + V <sub>IN_LEV</sub>	
			11	1.4 + V <sub>IN_LEV</sub>	1.5 + V <sub>IN_LEV</sub>	1.6 + V <sub>IN_LEV</sub>	
Register-Programmable Input Low Trip Voltage	V <sub>IL_DPDM</sub>		00	0.8 + V <sub>IN_LEV</sub>	0.9 + V <sub>IN_LEV</sub>	1.0 + V <sub>IN_LEV</sub>	V
			01	0.9 + V <sub>IN_LEV</sub>	1.0 + V <sub>IN_LEV</sub>	1.1 + V <sub>IN_LEV</sub>	
			10	1.0 + V <sub>IN_LEV</sub>	1.1 + V <sub>IN_LEV</sub>	1.2 + V <sub>IN_LEV</sub>	
			11	1.1 + V <sub>IN_LEV</sub>	1.2 + V <sub>IN_LEV</sub>	1.3 + V <sub>IN_LEV</sub>	
DPDM Switch On-Resistance	R <sub>ON_DPDM</sub>		--	--	40	Ω	
DP Comparison Threshold for Cable Detection	V <sub>TH_DP_CD</sub>	Send an interrupt to MCU when cable detached	0.2	0.3	0.4	V	
Register-Programmable Cable Detection Debounce Time	t <sub>DP_CD</sub>	Debounce Time = t <sub>DP_CD</sub> × K <sub>tDP_CD</sub> (Note 5)	00	--	1	--	μs
			01	--	2	--	
			10	--	4	--	
			11	--	8	--	

Parameter	Symbol	Conditions	Min	Typ	Max	Unit	
Register-Programmable Cable Detection Debounce Time Scale	K <sub>tDP_CD</sub>	(Note 5)	00	--	1	--	--
			01	--	8	--	
			10	--	64	--	
			11	--	512	--	
<b>CC1, CC2 Section</b>							
Register-Programmable Input High Trip Voltage	V <sub>IH_CC</sub>		00	0.7	0.8	0.9	V
			01	0.6	0.7	0.8	
			10	0.5	0.6	0.7	
			11	0.4	0.5	0.6	
Register-Programmable Input Low Trip Voltage	V <sub>IL_CC</sub>		00	0.4	0.5	0.6	V
			01	0.3	0.4	0.5	
			10	0.2	0.3	0.4	
			11	0.1	0.2	0.3	
Register-Programmable Sourcing Current	I <sub>CC_SRC</sub>		00	High Impedance			μA
			01	72	80	88	
			10	166	180	194	
			11	304	330	356	
CC1/CC2 Comparison Threshold for Cable Detection	V <sub>CC_OP</sub>		2.5	2.6	2.7	V	
<b>USBP Section</b>							
Output High Voltage	V <sub>OH_USB</sub> P		V <sub>DD</sub> + 6	V <sub>DD</sub> + 8	V <sub>DD</sub> + 10	V	
Register-Programmable Rise Time	t <sub>R_USB</sub> P	C <sub>L</sub> = 4nF, V <sub>DD</sub> = 5V, from 20% to 80%	00	3840	4800	5760	μs
			01	1920	2400	2880	
			10	980	1200	1440	
			11	480	600	720	
Fall Time	t <sub>F_USB</sub> P	C <sub>L</sub> = 4nF, V <sub>DD</sub> = 5V, from 90% to 10%	--	--	2	μs	
Output Low Voltage	V <sub>OL_USB</sub> P	V <sub>DD</sub> = 2V, I <sub>USB</sub> P = 100μA before start-up	--	--	1	V	
<b>SR Driver Section</b>							
Output High Voltage	V <sub>OH_VG</sub>	I <sub>SOURCE</sub> = 50mA, V <sub>g</sub> = 9V	8.5	--	--	V	
Output Low Voltage	V <sub>OL_VG</sub>	I <sub>SINK</sub> = 50mA, V <sub>g</sub> = 9V	--	--	0.5	V	
Rise Time	t <sub>R_VG</sub>	C <sub>L</sub> = 6nF, V <sub>g</sub> = 9V, from 20% to 80%	--	75	125	ns	
Fall Time	t <sub>F_VG</sub>	C <sub>L</sub> = 6nF, V <sub>g</sub> = 9V, from 80% to 20%	--	35	85	ns	
Propagation Time	t <sub>P</sub>		--	100	--	ns	

Parameter	Symbol	Conditions	Min	Typ	Max	Unit	
Initial Output Low Clamping Voltage before Start-up	V <sub>OL_VG_INI</sub>	V <sub>DD</sub> = 2.5V, I <sub>SINK</sub> = 50mA	--	--	1	V	
Internal Pull-Low Resistor	R <sub>GS_LOW</sub>		--	20	--	kΩ	
<b>V<sub>TR</sub> Section</b>							
V <sub>TR</sub> Internal Resistance	R <sub>VDS2</sub>		4.56	4.80	5.04	kΩ	
V <sub>TR</sub> Sample and Hold Error	E <sub>SH_VTR</sub>	$( V_{V\_TR\_HIGH} - V_{VTR\_SH}  / V_{V\_TR\_HIGH}) \times 100$	--	5	--	%	
V <sub>TR</sub> Sample and Hold Threshold	K <sub>VTR_SH</sub>	V <sub>TH_SH</sub> = K <sub>VTR_SH</sub> × V <sub>V_TR_HIGH</sub> [n-1]	--	0.875	--	--	
Mask Time	t <sub>MASK</sub>	V <sub>V_TR</sub> > V <sub>TH_SH</sub>	--	300	--	ns	
Register-Programmable V <sub>TR</sub> Blanking Time	t <sub>BLANK_VTR</sub>	V <sub>V_TR</sub> > V <sub>TH_SH</sub> (Note 5)	000	0.4	0.5	0.6	μs
			001	0.6	0.7	0.8	
			010	0.8	0.9	1.0	
			011	1.0	1.1	1.2	
			100	1.2	1.3	1.4	
			101	1.4	1.5	1.6	
			110	1.6	1.7	1.8	
			111	1.8	1.9	2	
Register-Programmable V <sub>TR</sub> Under Voltage Threshold	V <sub>TH_VTR_UV</sub>	If V <sub>V_TR_HIGH</sub> - (V <sub>OUT</sub> × K <sub>VDS_SR</sub> ) > V <sub>TH_VTR_UV</sub> , SR driver is active.	000	Disable			V
			001	0.3	0.4	0.5	
			010	0.25	0.35	0.45	
			011	0.2	0.3	0.4	
			100	0.15	0.25	0.35	
			101	0.1	0.2	0.3	
			110	0.05	0.15	0.25	
			111	0	0.1	0.2	
Low Level Threshold for Input Voltage	K <sub>VIN_LOW</sub>	When V <sub>V_TR</sub> < K <sub>VIN_LOW</sub> × V <sub>OUT</sub> , It will send an interrupt to MCU.	2.0	2.2	2.4	--	
V <sub>TR</sub> Over-Voltage Threshold	V <sub>TH_VTR_OV</sub>	V <sub>9</sub> = 4.5V	2.8	3.0	3.2	V	
Low Level Threshold for V <sub>TR</sub> Falling Edge Detection and Dead Time Comparison Threshold	V <sub>TH_VTR_DT</sub>		0.05	0.10	0.15	V	
Dead Time Comparator Delay	t <sub>D_DT</sub>	(Note 5)	--	--	40	ns	
Dead Time Comparator Blanking Time	t <sub>BLANK_DT</sub>	Disable dead time comparator on VG rising edge	--	700	--	ns	

Parameter	Symbol	Conditions	Min	Typ	Max	Unit	
Register-Programmable V <sub>TR</sub> Falling Time Threshold	tv <sub>TR_FALLING</sub>	If V <sub>TR</sub> falling time < tv <sub>TR_FALLING</sub> , VG will be triggered.	00	200	250	300	ns
			01	150	200	250	
			10	100	150	200	
			11	50	100	150	
Register-Programmable V <sub>TR</sub> Falling Edge Debouce Time	tD <sub>VTR</sub>		0	--	0.15	--	μs
			1	--	0	--	
V <sub>TR</sub> Rising Edge Threshold for AC OFF Detection	V <sub>V<sub>TR</sub>_EDGE</sub>		0.05	0.1	0.15	V	
V <sub>TR</sub> Rising Edge Debouce Time for AC OFF Detection	tv <sub>TR_EDGE</sub>	If V <sub>V<sub>TR</sub></sub> in tv <sub>TR_EDGE</sub> is lower than V <sub>V<sub>TR</sub>_EDGE</sub> , It will send an AC OFF interrupt to MCU.	20	26	32	ms	
<b>SR Control Section</b>							
SR MOSFET V <sub>DS</sub> Scaling Factor	KV <sub>D<sub>S</sub>_SR</sub>	R <sub>V<sub>D<sub>S</sub>2</sub></sub> / (R <sub>V<sub>D<sub>S</sub>1</sub></sub> + R <sub>V<sub>D<sub>S</sub>2</sub></sub> ) For RT7205A (Note 5)	--	1/26	--	--	
		R <sub>V<sub>D<sub>S</sub>2</sub></sub> / (R <sub>V<sub>D<sub>S</sub>1</sub></sub> + R <sub>V<sub>D<sub>S</sub>2</sub></sub> ) For RT7205AL (Note 5)	--	1/13	--		
Register-Programmable gm Ratio	gm <sub>V<sub>TR</sub></sub> gm <sub>V<sub>OUT</sub></sub>		0	3.84	4.17	4.50	--
			1	3.22	3.57	3.92	
Maximum VG Pulse Width Expansion Limit	t <sub>SRON_MAX</sub>	t <sub>SR_ON</sub> [n] < t <sub>SR_ON</sub> [n-1] x t <sub>SRON_MAX</sub> (Note 5)	--	106	--	%	
Register-Programmable V <sub>TR</sub> Pulse Width Expansion/Shrink Limit	t <sub>PWLMT_VTR</sub>	If tv <sub>TR</sub> [n] > tv <sub>TR</sub> [n-1] + t <sub>PWLMT_VTR</sub> or tv <sub>TR</sub> [n] < tv <sub>TR</sub> [n-1] - t <sub>PWLMT_VTR</sub> , reset automatic tracking counter (Note 5)	00	--	0.3	--	μs
			01	--	0.5	--	
			10	--	0.7	--	
			11	--	0.9	--	
Register-Programmable Minimum Period	t <sub>PERIOD_MIN</sub>	Interval limit from V <sub>TR</sub> rising edge to VG falling edge. The clock period is based on f <sub>OSC_MCU</sub> and can be set by the 12-bit register. (Note 5)	--	190	--	μs	
Register-Programmable VG Inhibit Time	t <sub>INHIBIT_SR</sub>	Interval limit from VG rising edge to next VG rising edge The clock period is based on f <sub>OSC_MCU</sub> and can be set by the 9-bit register. (Note 5)	--	24	--	μs	

Parameter	Symbol	Conditions	Min	Typ	Max	Unit	
<b>PLL Function Section</b>							
Register-Programmable PLL Dead Time	t <sub>DEAD_PLL</sub>	If VG falling edge to V <sub>TH_VTR_DT</sub> interval < t <sub>DEAD_PLL</sub> , reset automatic tracking counter (Note 5)	00	--	1100	--	ns
			01	--	600	--	
			10	--	300	--	
			11	Disable			
Register-Programmable Fault PLL Ratio	K <sub>FAULT_PLL</sub>	If t <sub>PWM</sub> [n] > K <sub>FAULT_PLL</sub> × t <sub>PWM</sub> [n-1], VG will skipped two cycles and reset automatic tracking counter (Note 5)	0	--	1.5	--	--
			1	Disable			
<b>Automatic Tracking Section</b>							
Register-Programmable Auto-Tracking Dead Time	t <sub>DEAD_TRACK</sub>	VG falling edge to V <sub>TH_VTR_DT</sub> interval (Note 5)	00	--	1500	--	ns
			01	--	1000	--	
			10	--	700	--	
			11	--	400	--	
Maximum Step Time for Tracking Up/Down		With respect to V <sub>REF_CV</sub>	0.5	--	1	%	

**Note 1.** Stresses beyond those listed “Absolute Maximum Ratings” may cause permanent damage to the device. These are stress ratings only, and functional operation of the device at these or any other conditions beyond those indicated in the operational sections of the specifications is not implied. Exposure to absolute maximum rating conditions may affect device reliability.

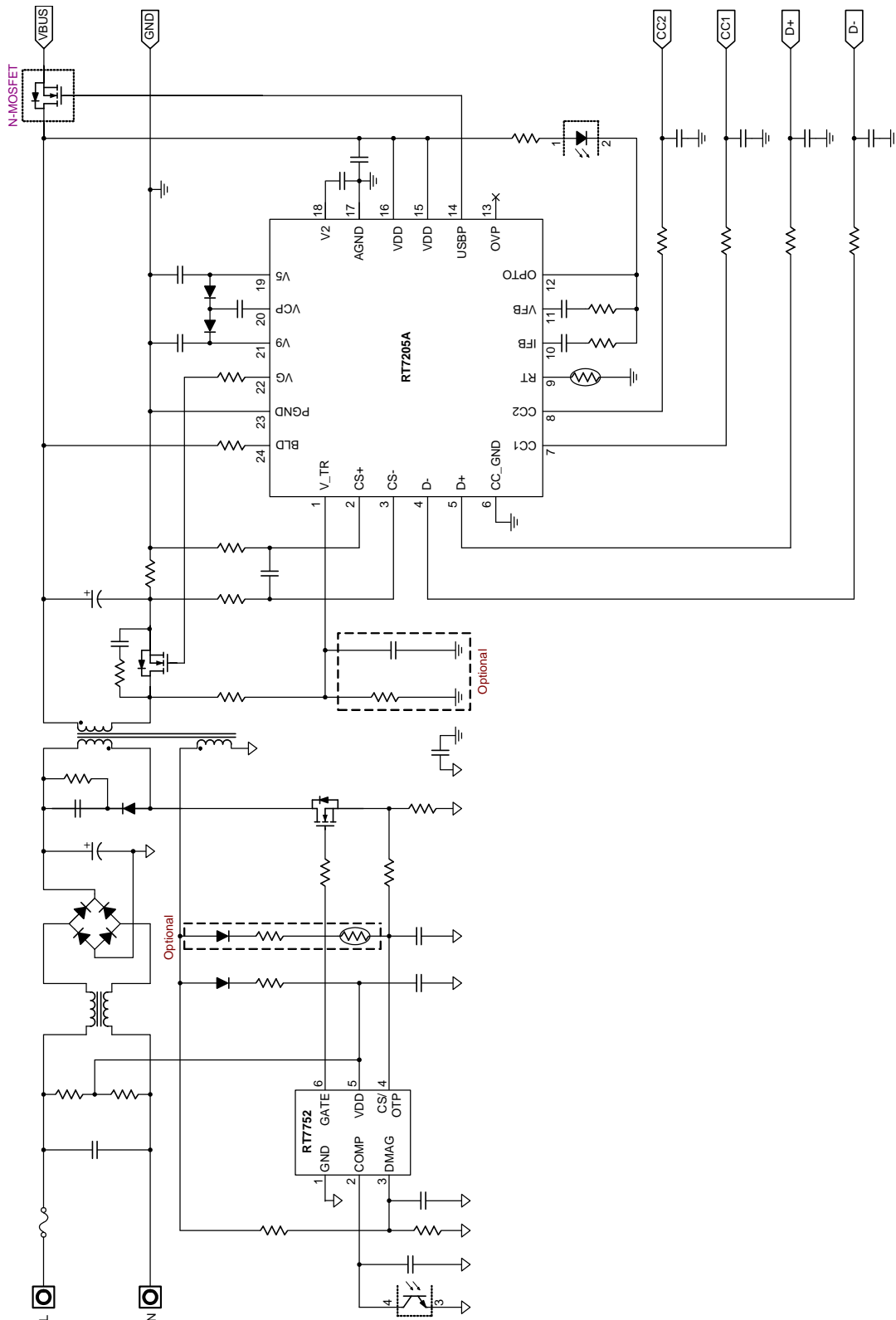
**Note 2.** θ<sub>JA</sub> is measured under natural convection (still air) at T<sub>A</sub> = 25°C with the component mounted on a high effective-thermal-conductivity four-layer test board on a JEDEC 51-7 thermal measurement standard. θ<sub>JC</sub> is measured at the exposed pad of the package.

**Note 3.** Devices are ESD sensitive. Handling precaution is recommended.

**Note 4.** The device is not guaranteed to function outside its operating conditions.

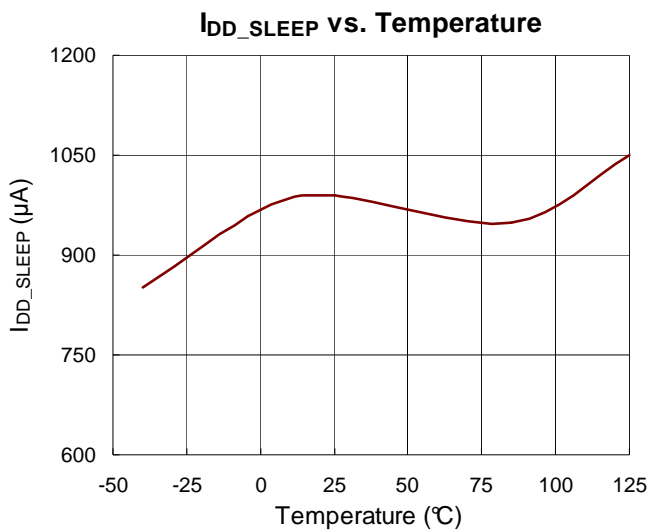
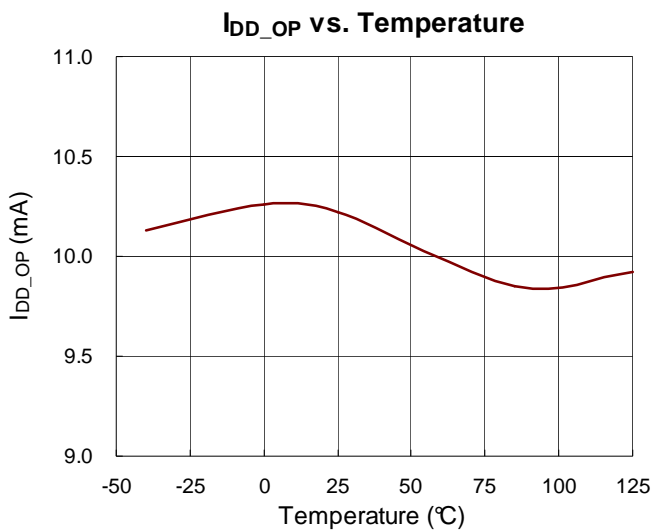
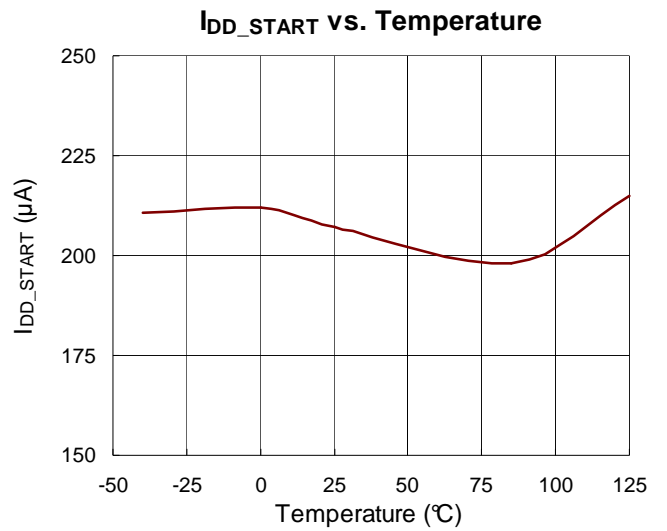
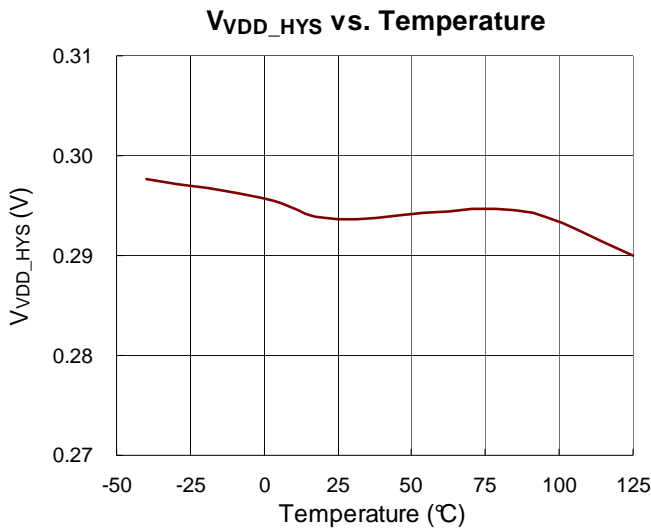
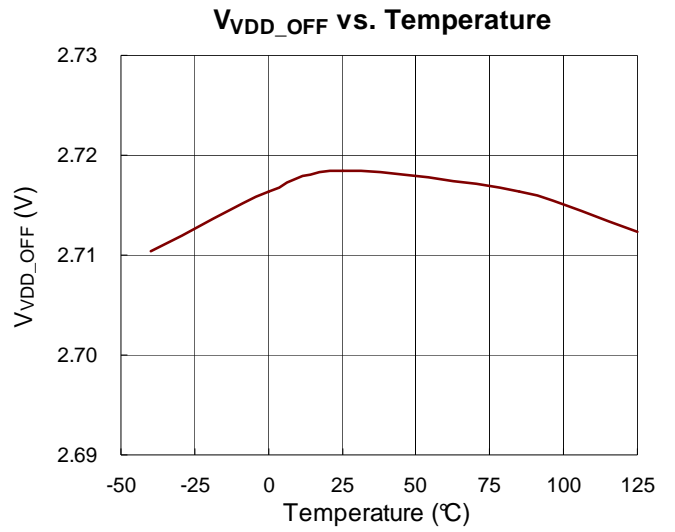
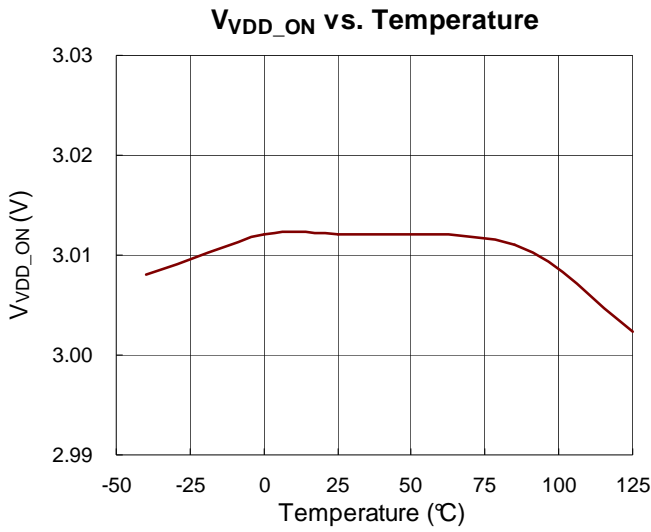
**Note 5.** Guaranteed by design.

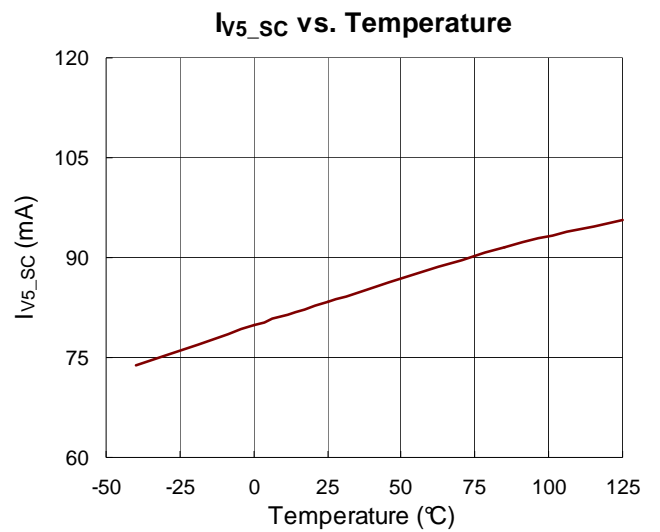
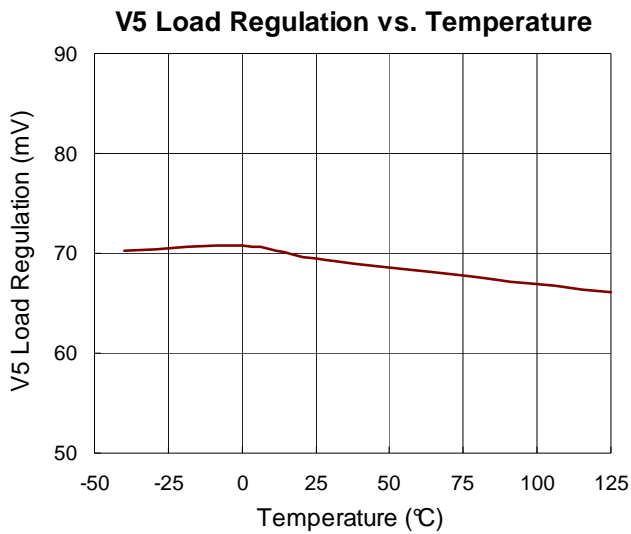
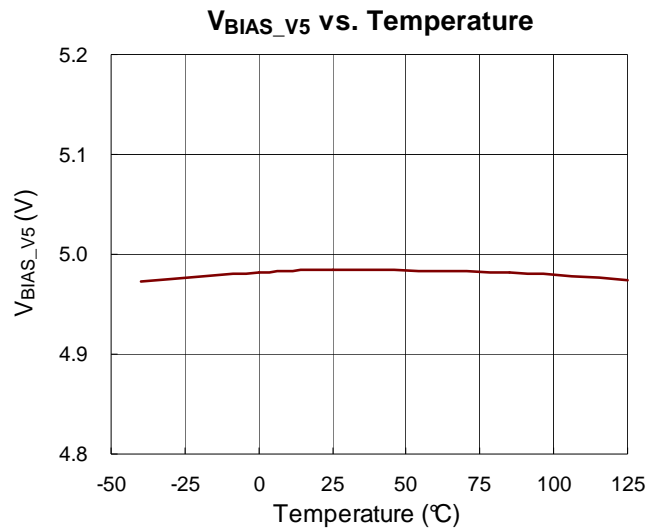
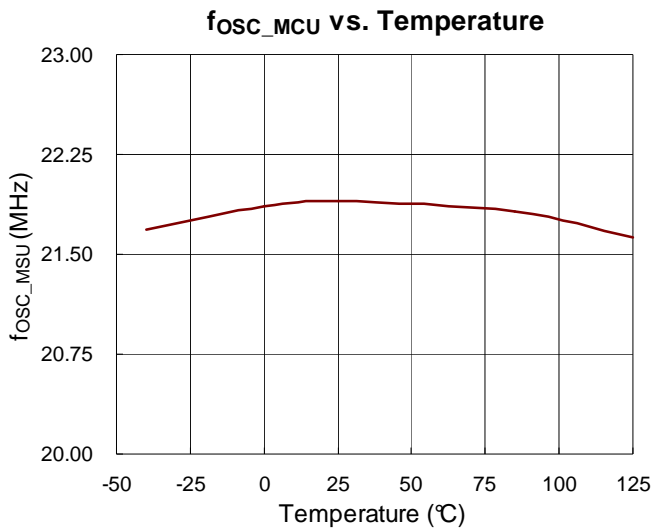
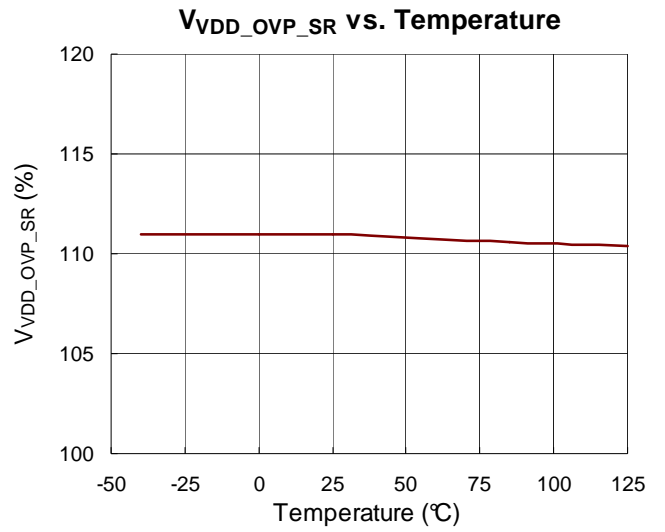
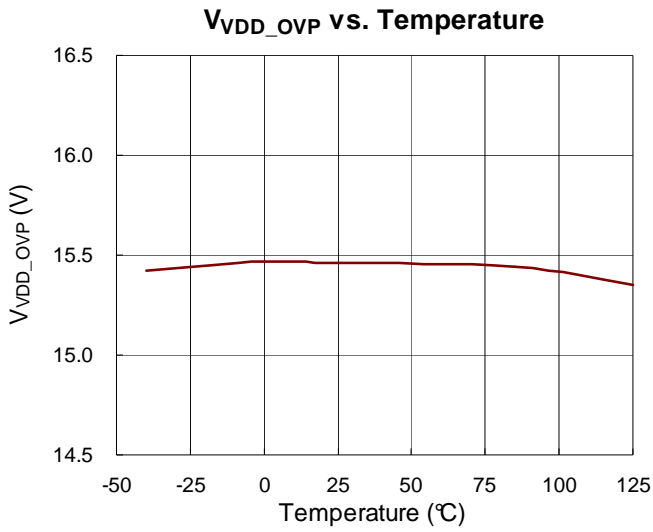
## Typical Application Circuit

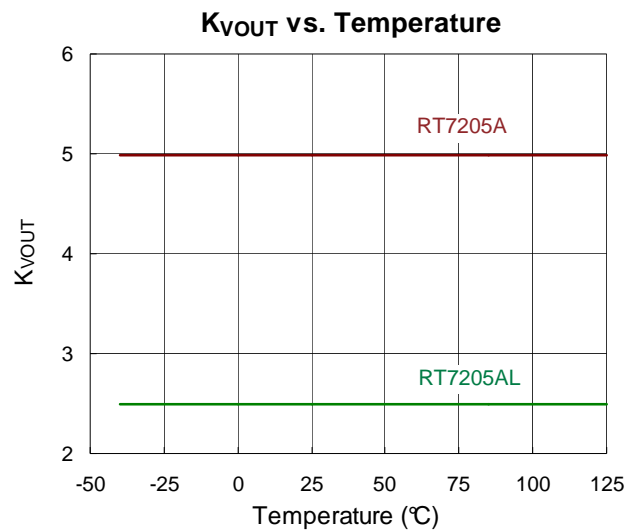
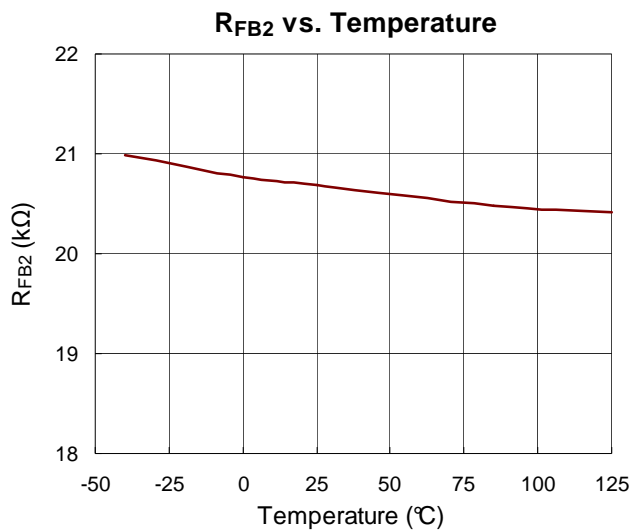
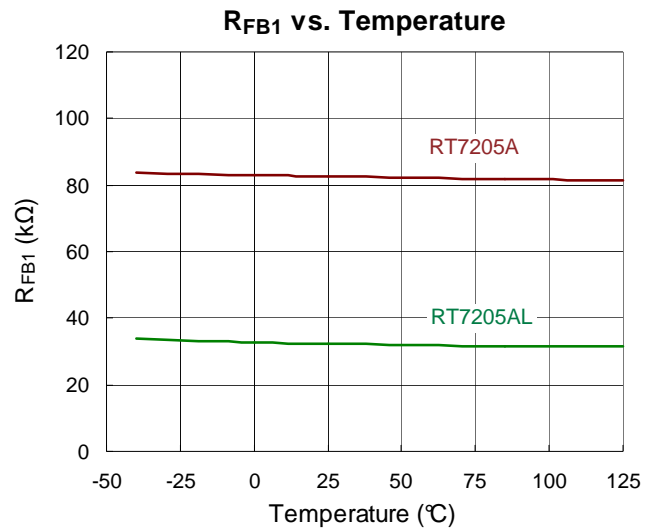
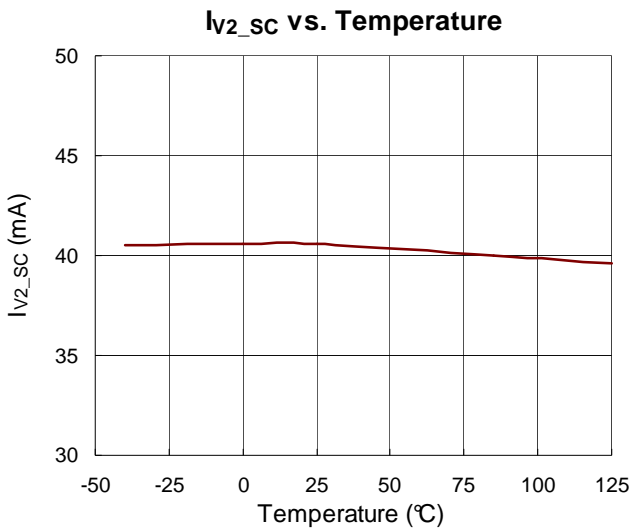
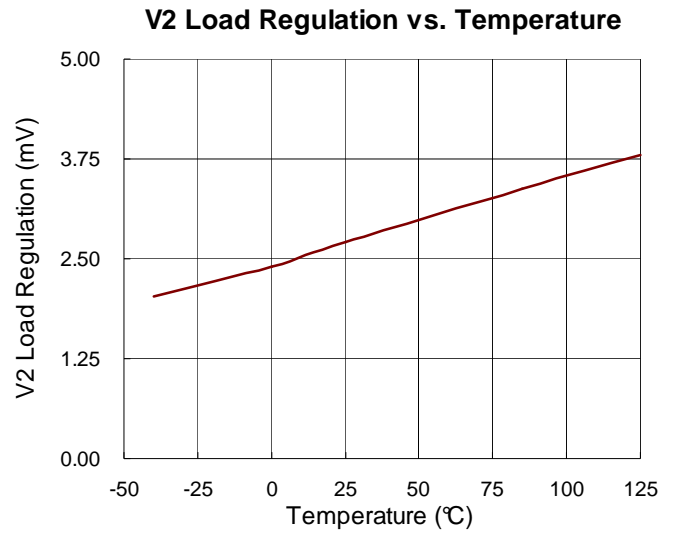
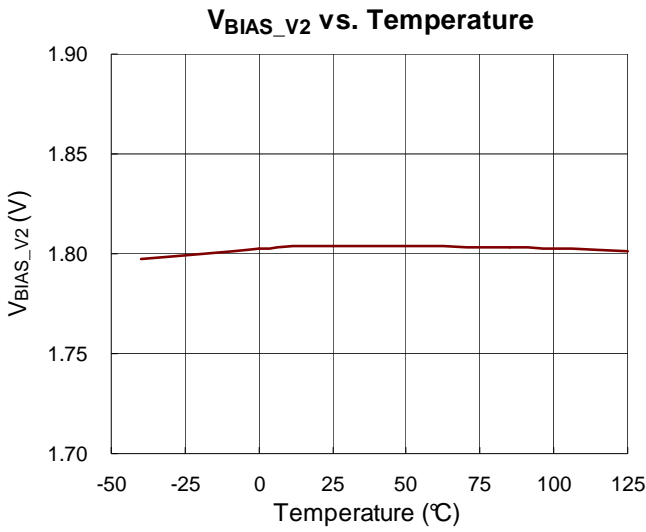




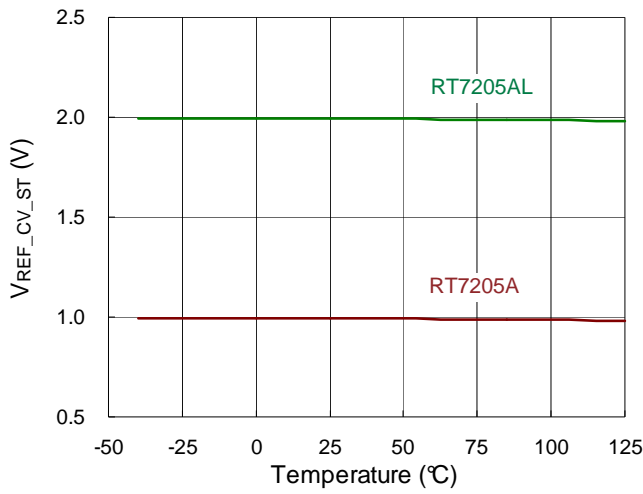
**Typical Operating Characteristics**



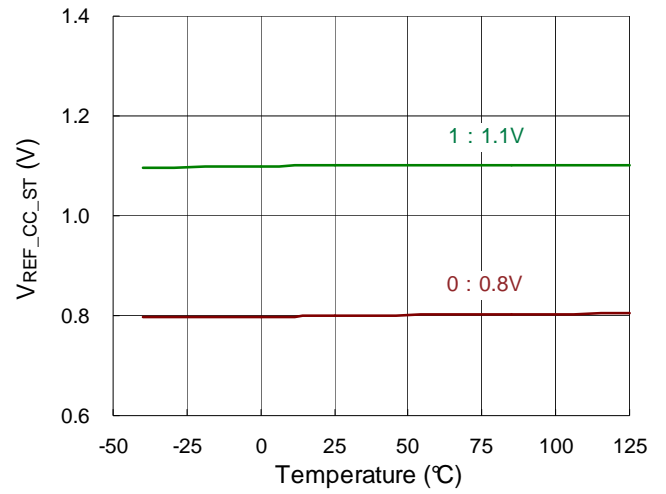




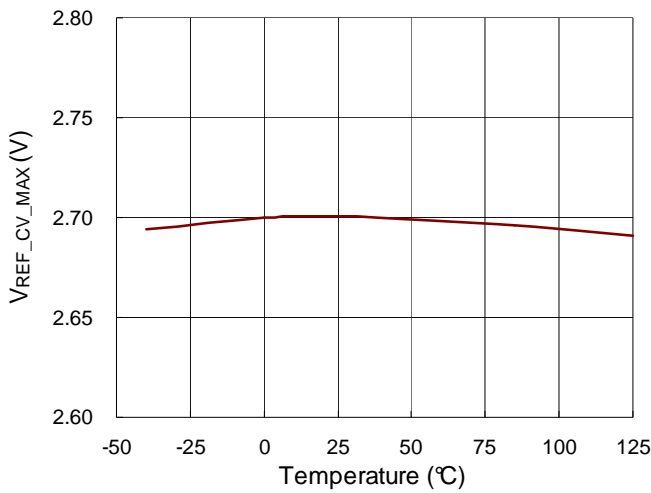
**V<sub>REF\_CV\_ST</sub> vs. Temperature**



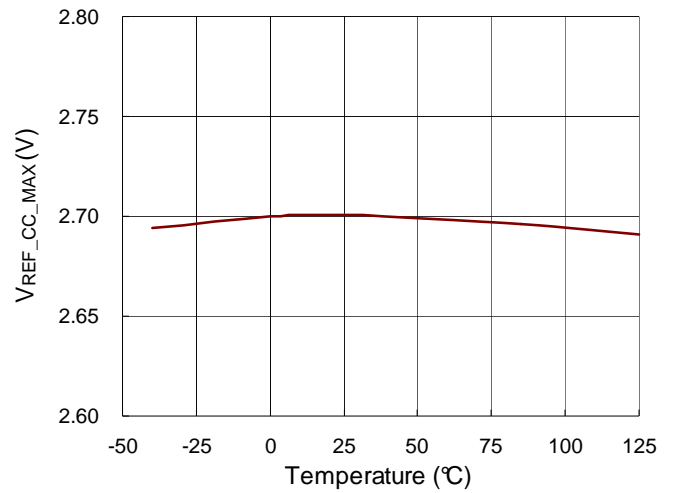
**V<sub>REF\_CC\_ST</sub> vs. Temperature**



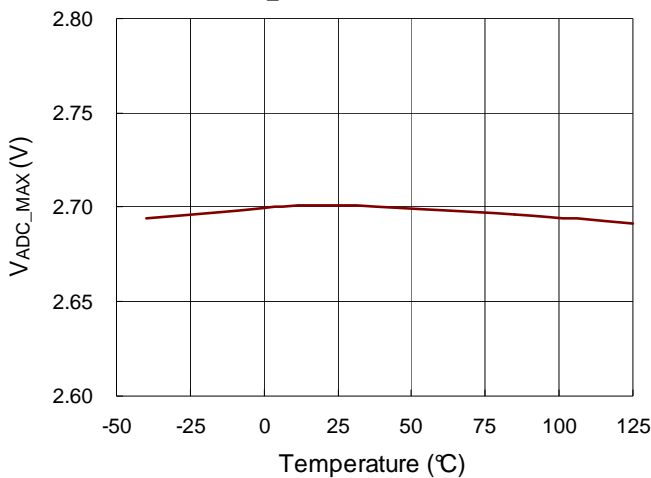
**V<sub>REF\_CV\_MAX</sub> vs. Temperature**



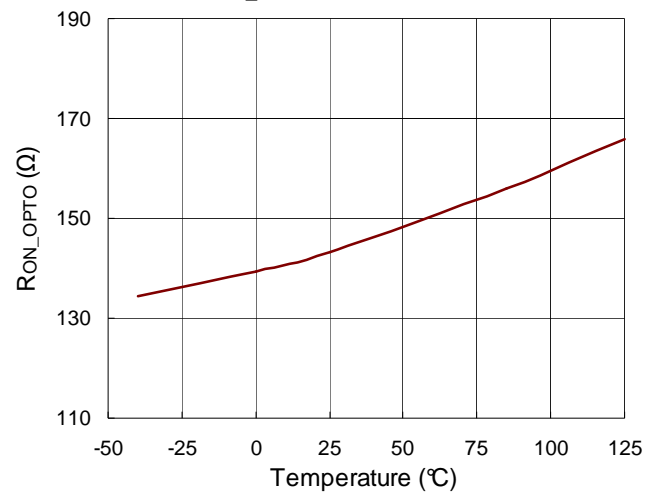
**V<sub>REF\_CC\_MAX</sub> vs. Temperature**



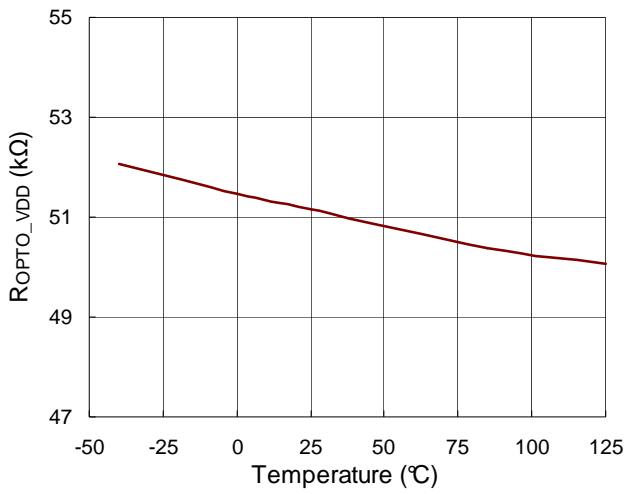
**V<sub>ADC\_MAX</sub> vs. Temperature**



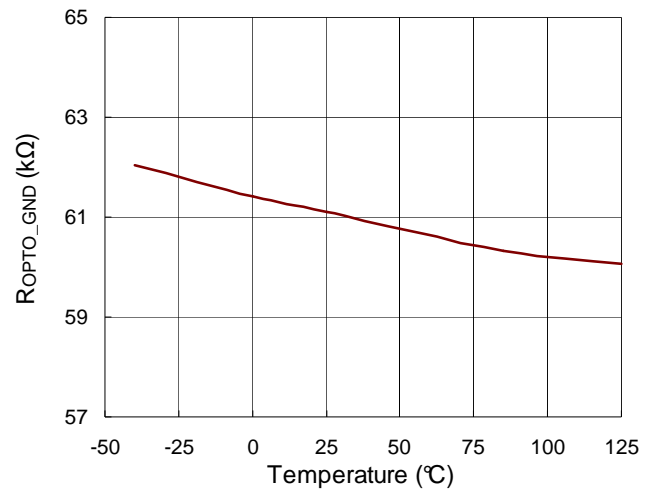
**R<sub>ON\_OPTO</sub> vs. Temperature**



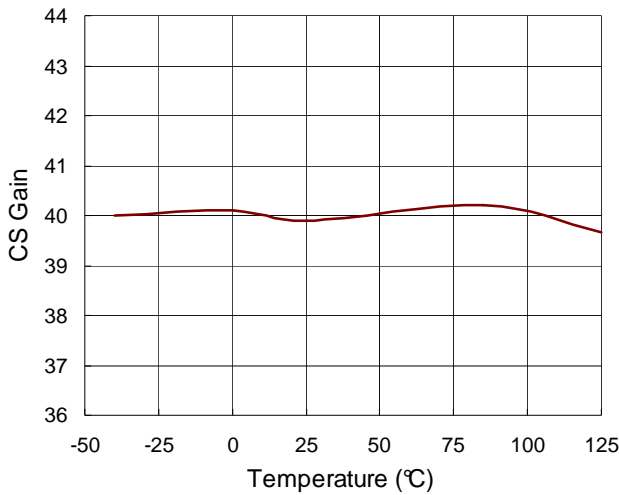
**ROPTO\_VDD vs. Temperature**



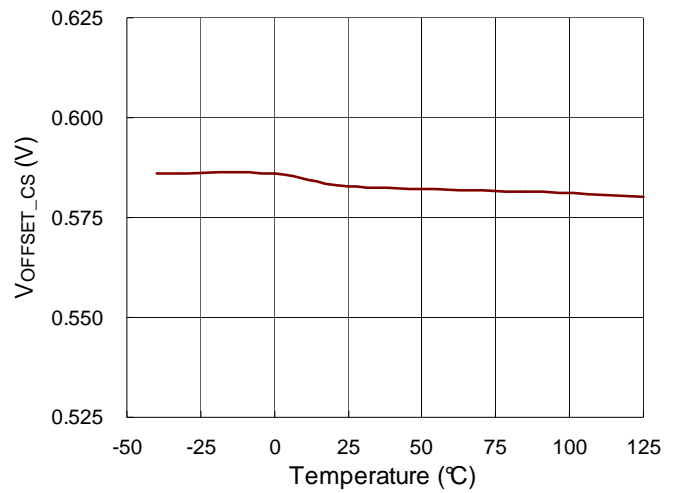
**ROPTO\_GND vs. Temperature**



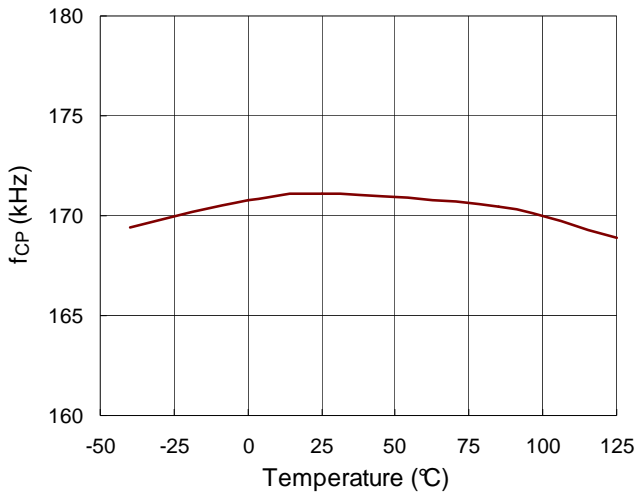
**CS Gain vs. Temperature**



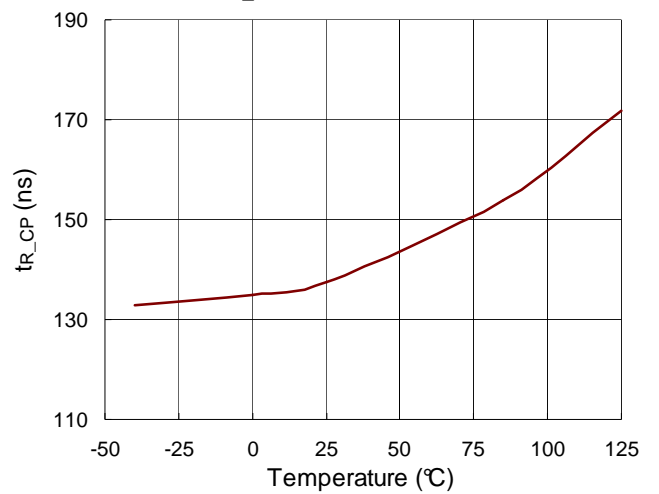
**V<sub>OFFSET\_CS</sub> vs. Temperature**



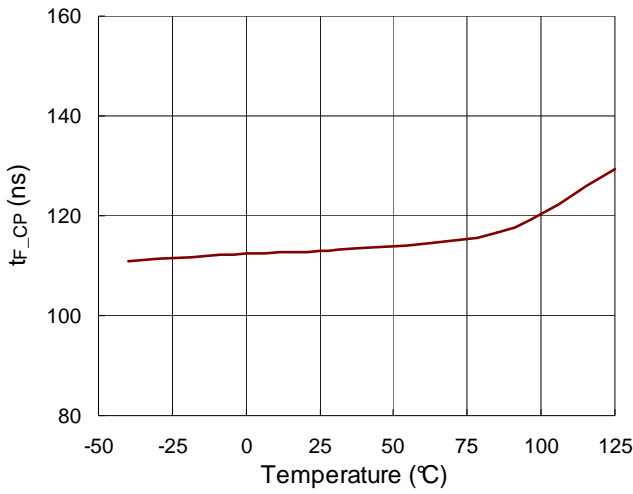
**f<sub>CP</sub> vs. Temperature**



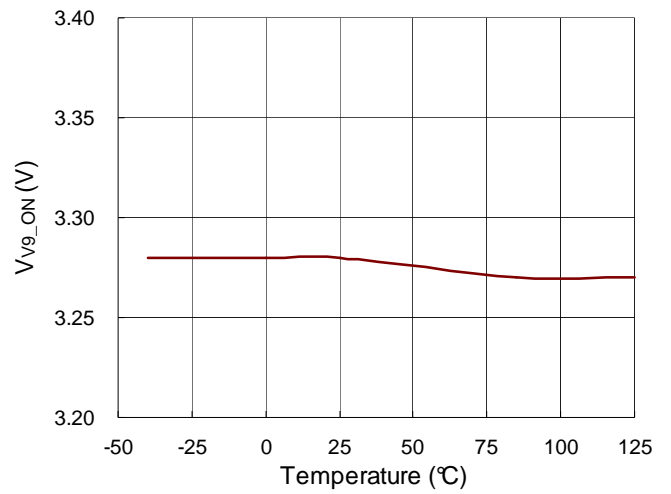
**t<sub>R\_CP</sub> vs. Temperature**



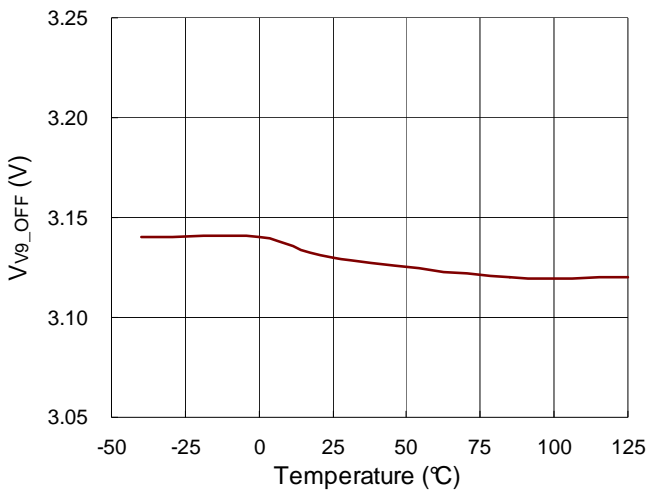
**t<sub>F\_CP</sub> vs. Temperature**



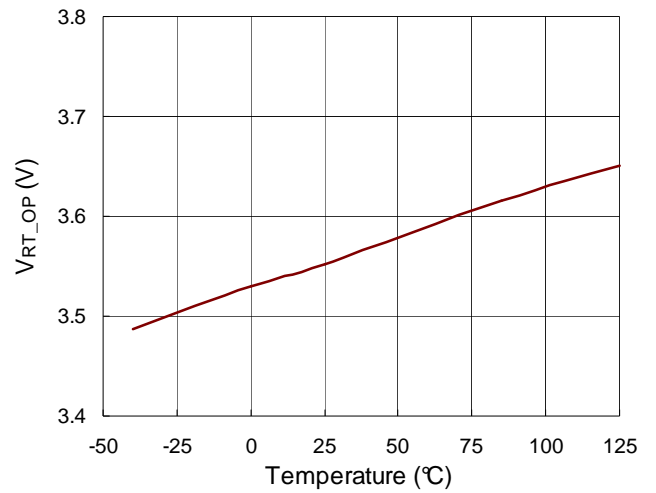
**V<sub>V9\_ON</sub> vs. Temperature**



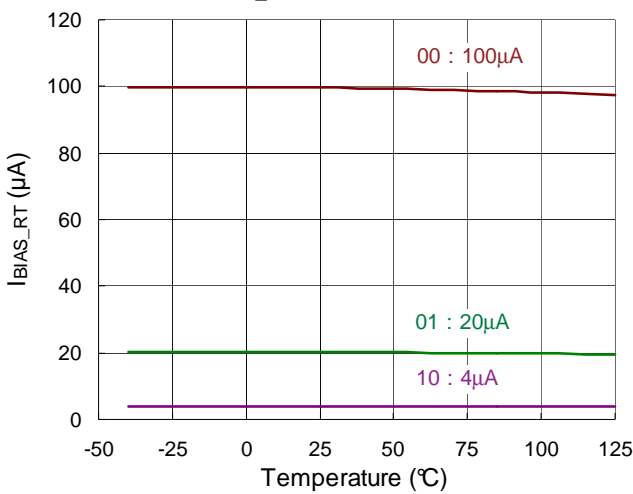
**V<sub>V9\_OFF</sub> vs. Temperature**



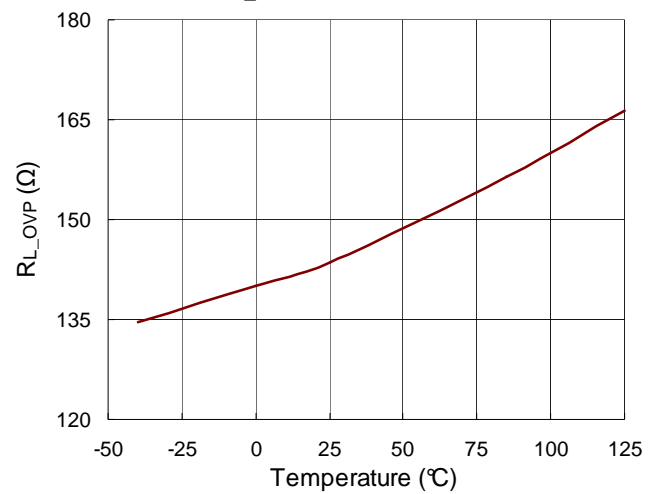
**V<sub>RT\_OP</sub> vs. Temperature**



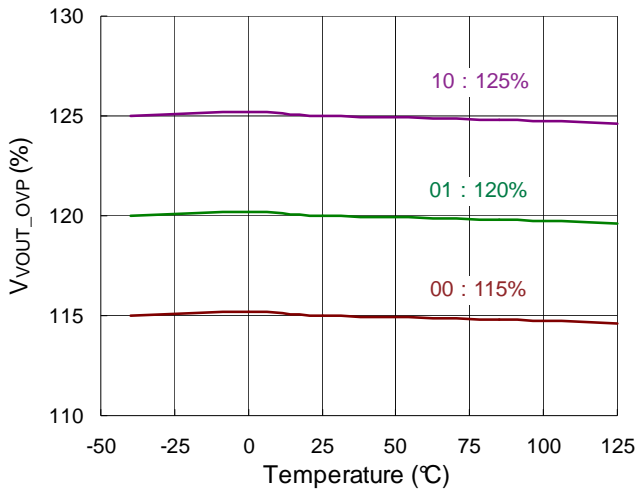
**I<sub>BIAS\_RT</sub> vs. Temperature**



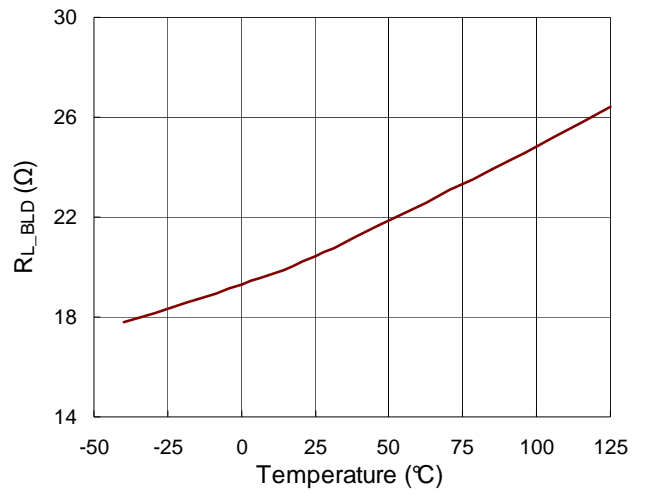
**R<sub>L\_OVP</sub> vs. Temperature**



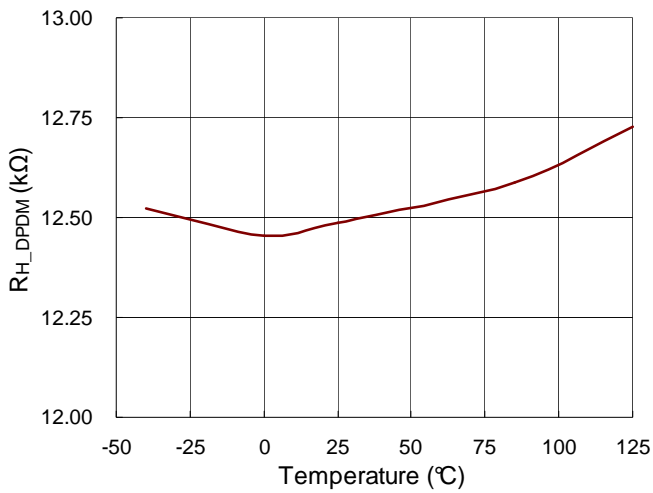
**V<sub>VOUT\_OVP</sub> vs. Temperature**



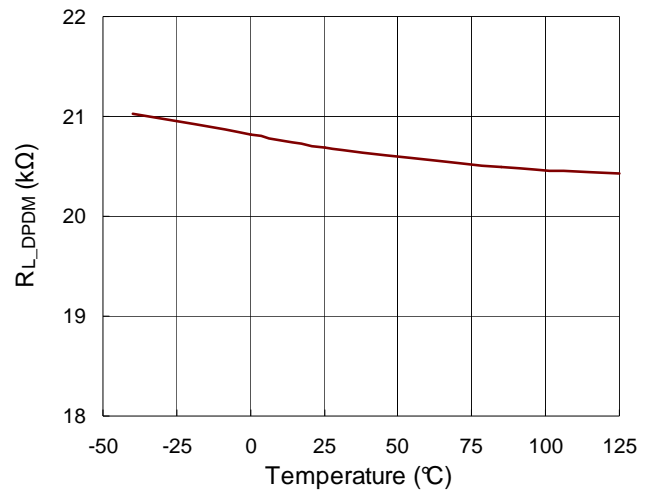
**R<sub>L\_BLD</sub> vs. Temperature**



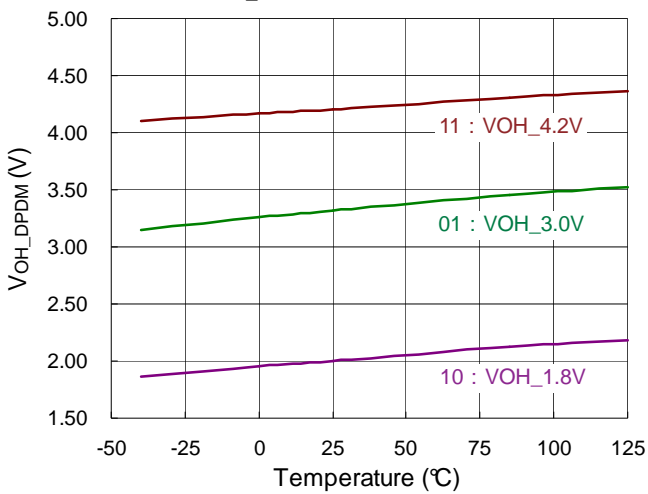
**R<sub>H\_DPDM</sub> vs. Temperature**



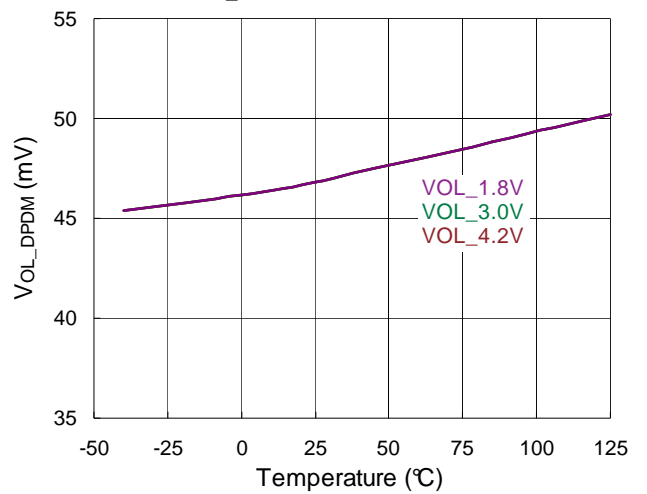
**R<sub>L\_DPDM</sub> vs. Temperature**

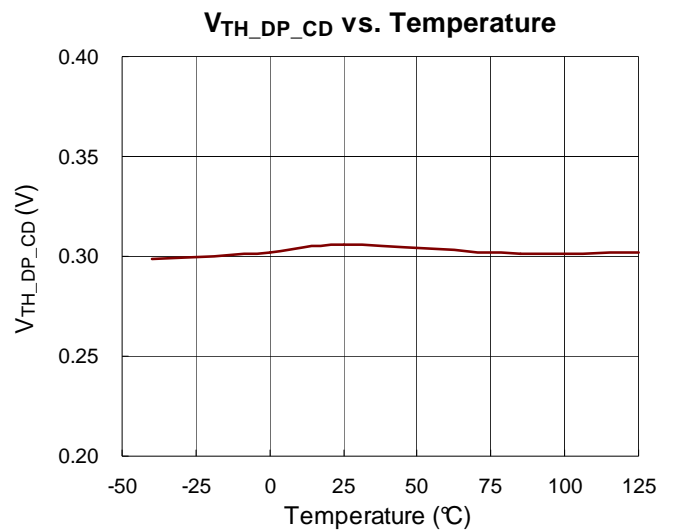
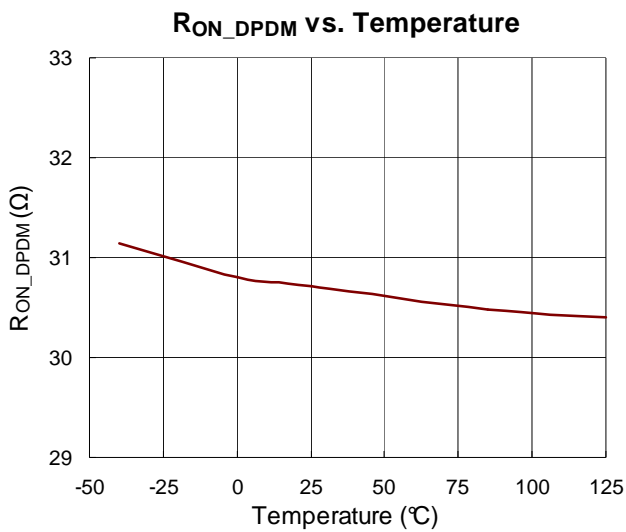
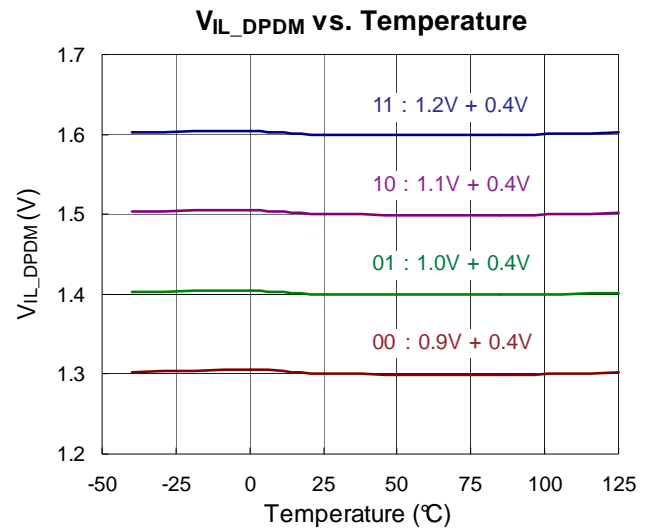
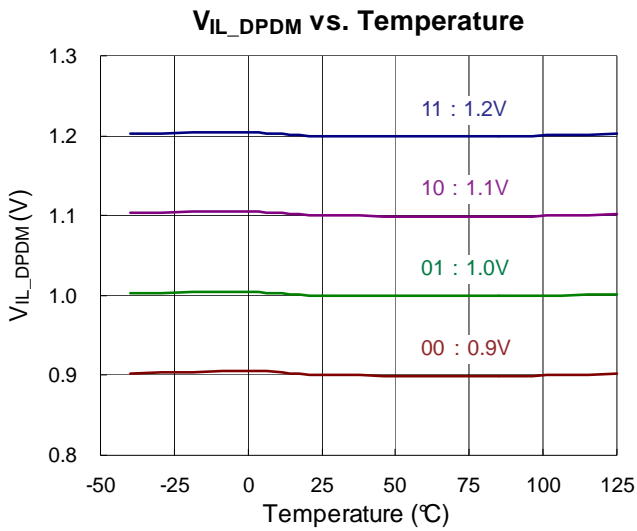
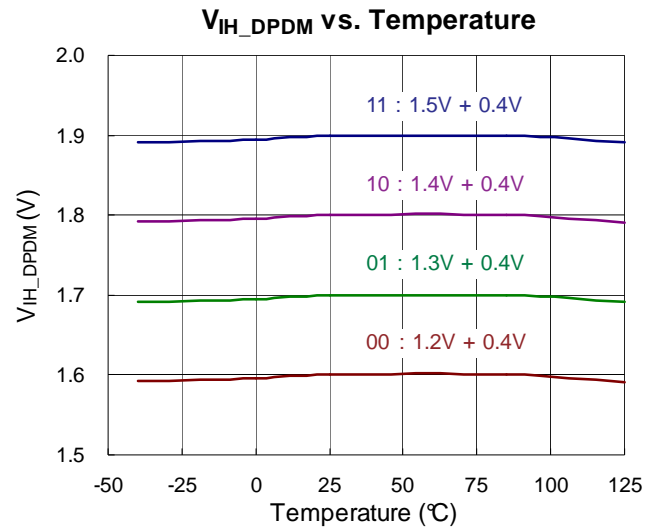
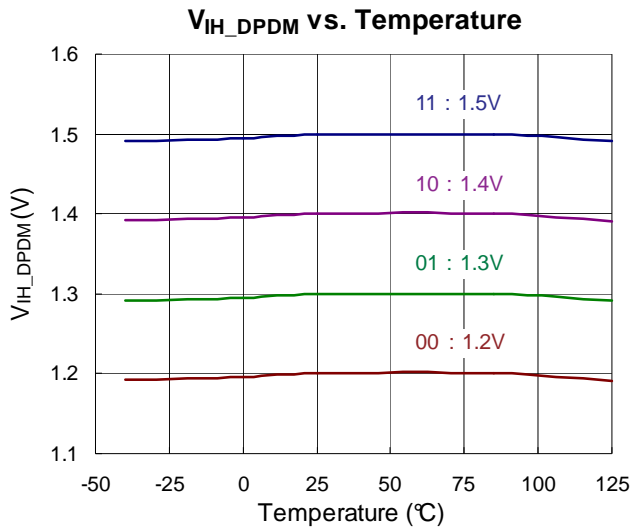


**V<sub>OH\_DPDM</sub> vs. Temperature**



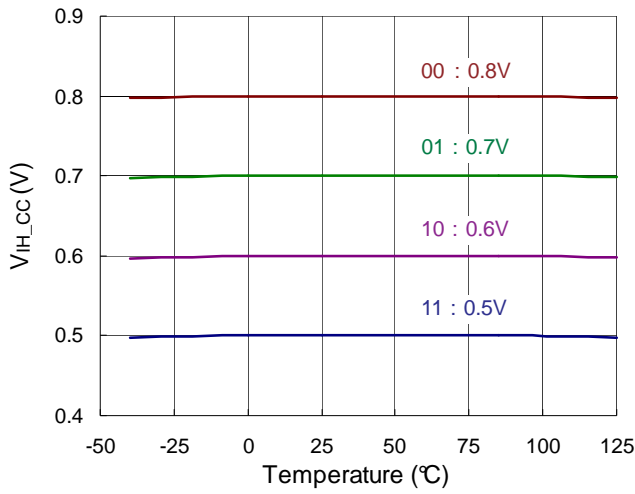
**V<sub>OL\_DPDM</sub> vs. Temperature**



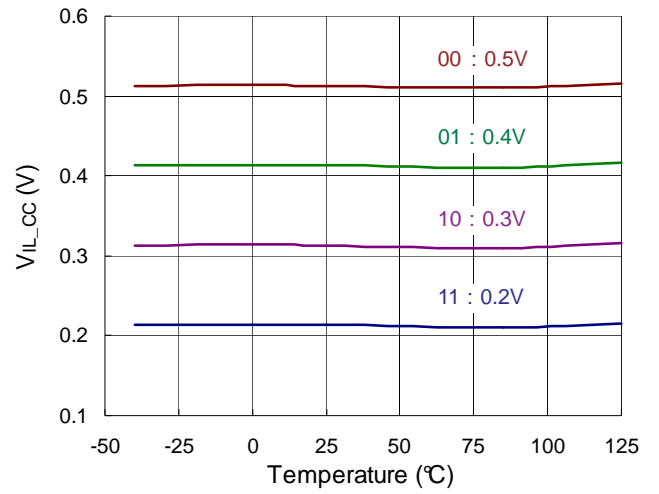




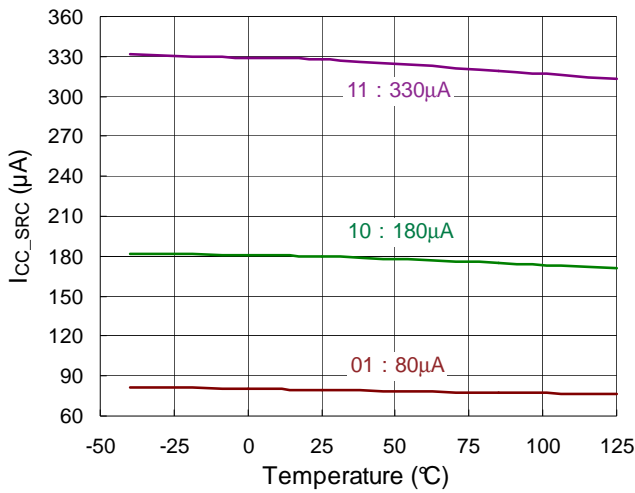
**V<sub>IH\_CC</sub> vs. Temperature**



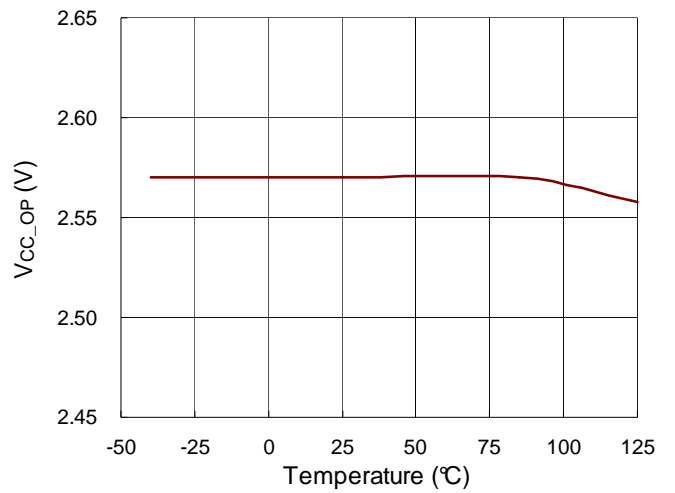
**V<sub>IL\_CC</sub> vs. Temperature**



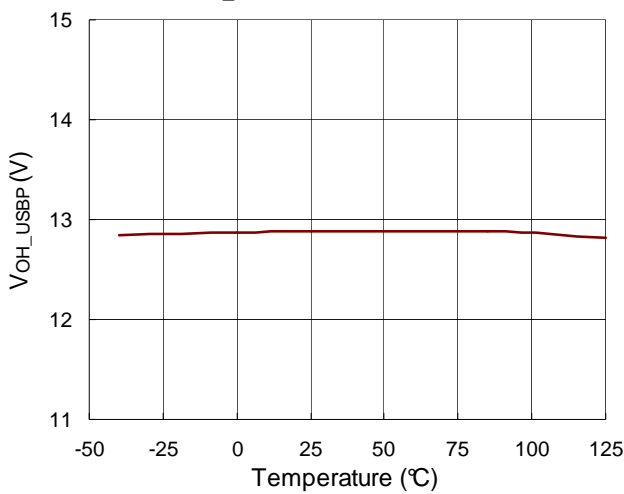
**I<sub>CC\_SRC</sub> vs. Temperature**



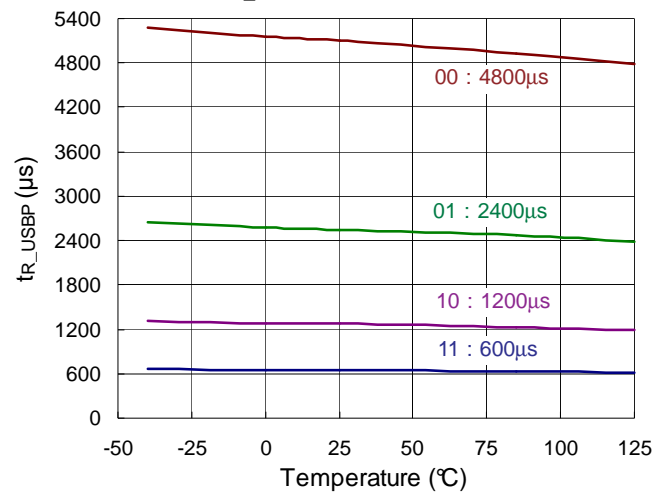
**V<sub>CC\_OP</sub> vs. Temperature**

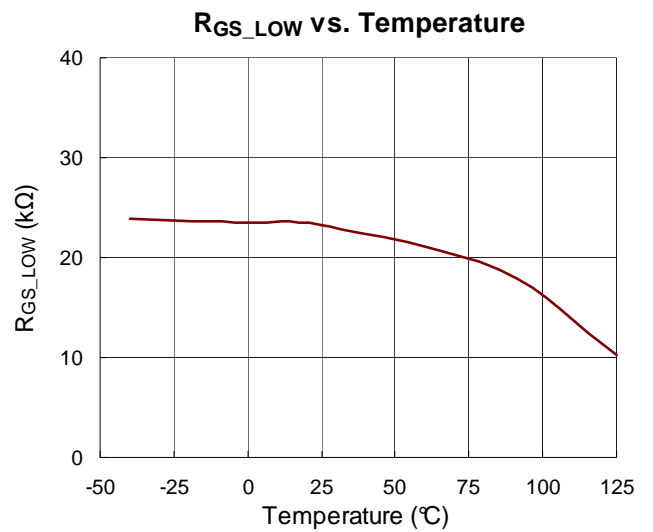
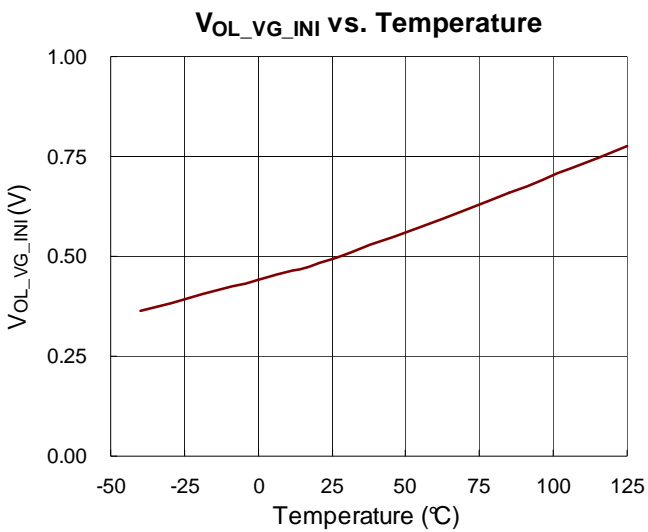
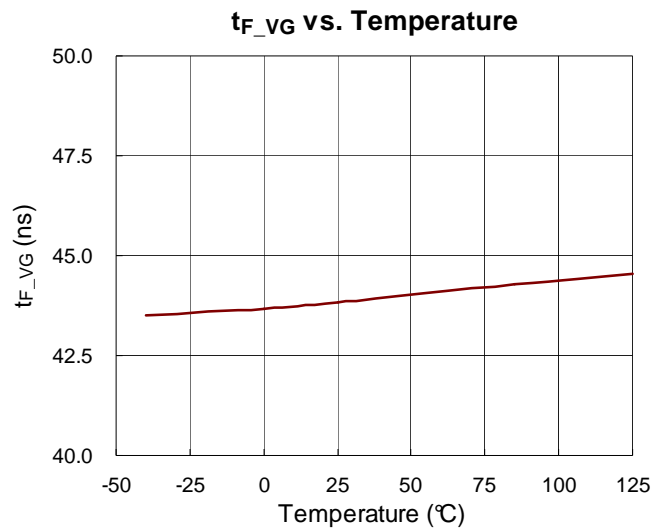
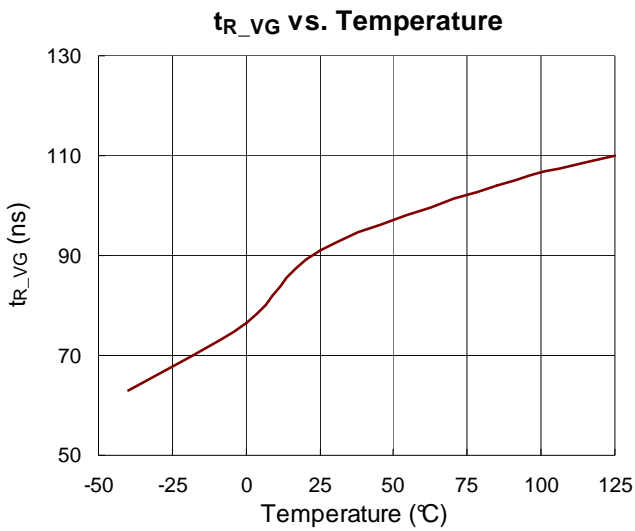
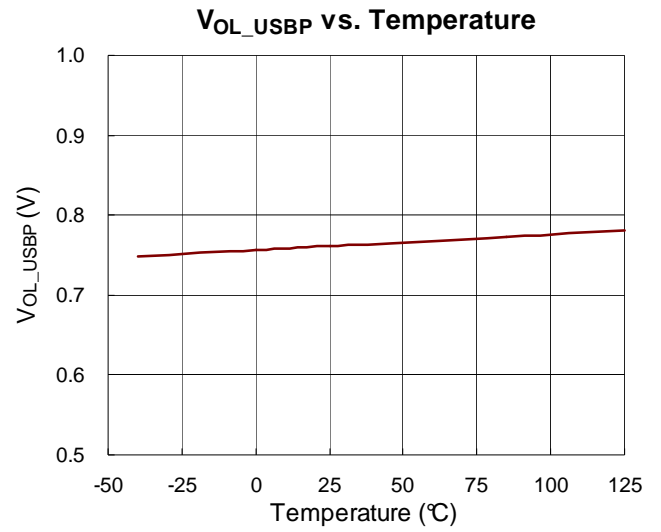
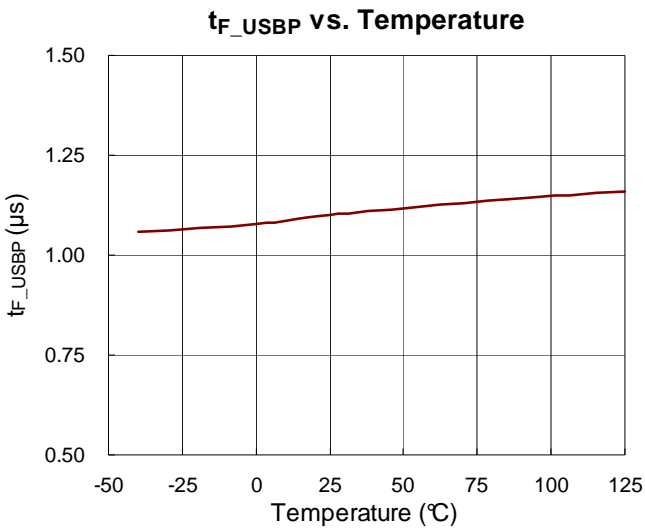


**V<sub>OH\_USBP</sub> vs. Temperature**

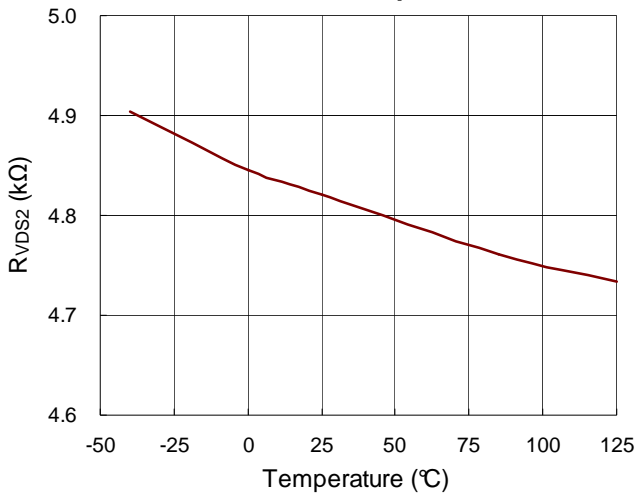


**t<sub>R\_USBP</sub> vs. Temperature**

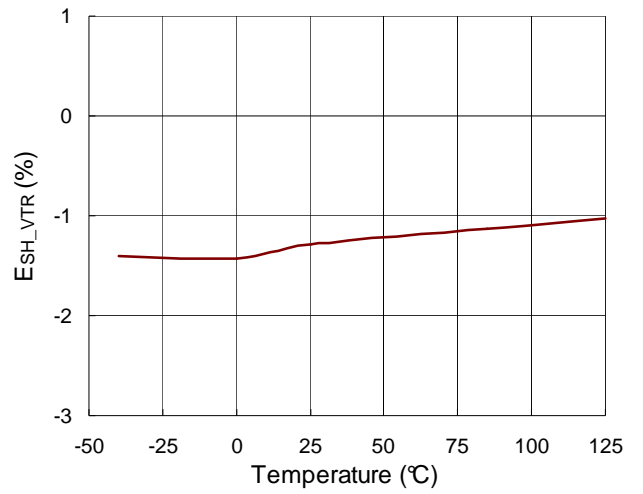




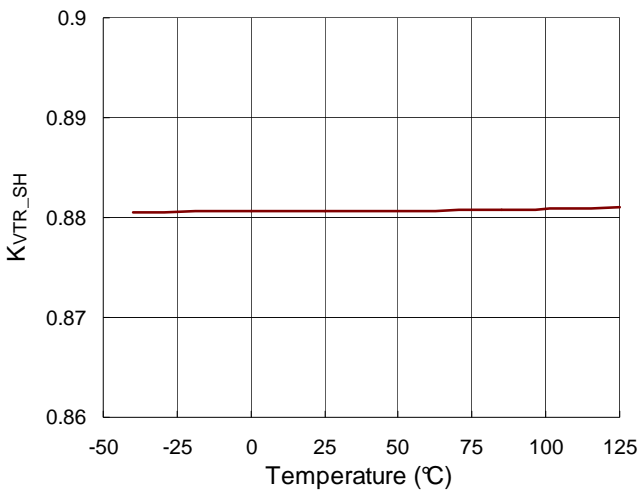
**R<sub>VDS2</sub> vs. Temperature**



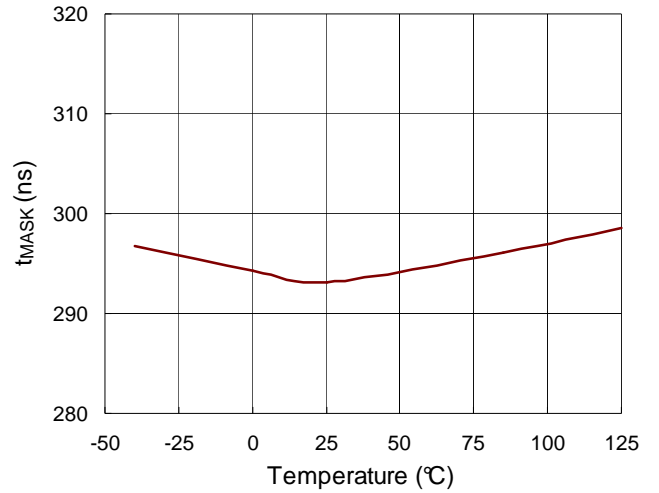
**E<sub>SH\_VTR</sub> vs. Temperature**



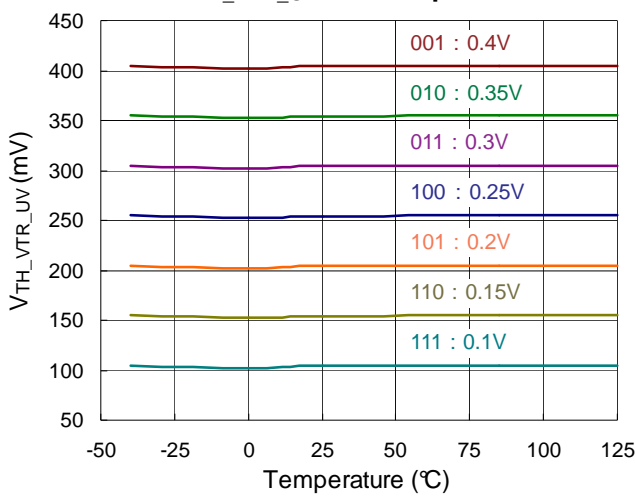
**K<sub>VTR\_SH</sub> vs. Temperature**



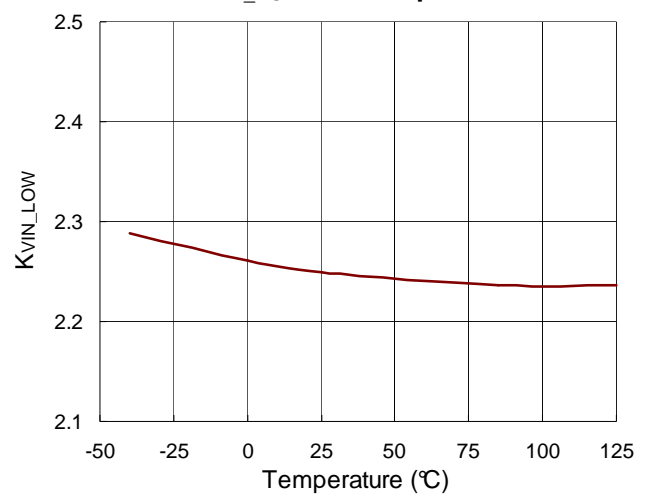
**t<sub>MASK</sub> vs. Temperature**



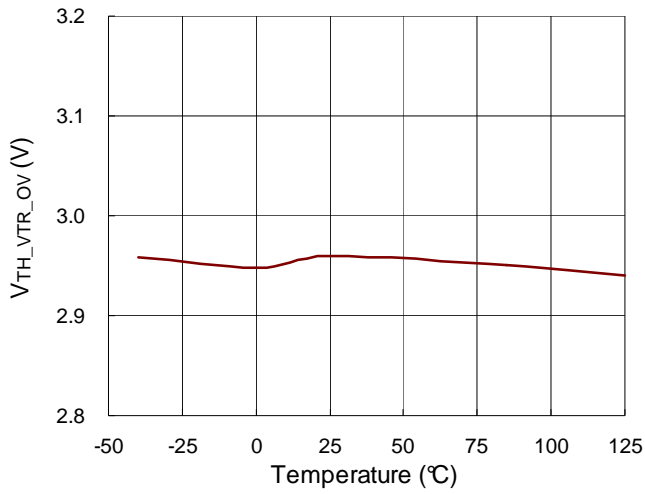
**V<sub>TH\_VTR\_UV</sub> vs. Temperature**



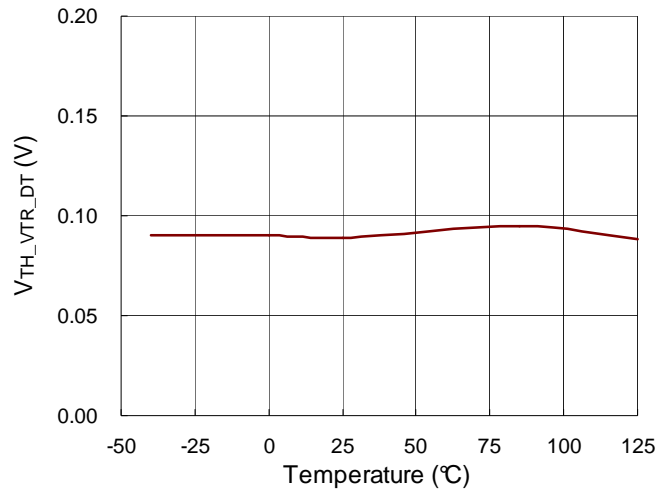
**K<sub>VIN\_LOW</sub> vs. Temperature**



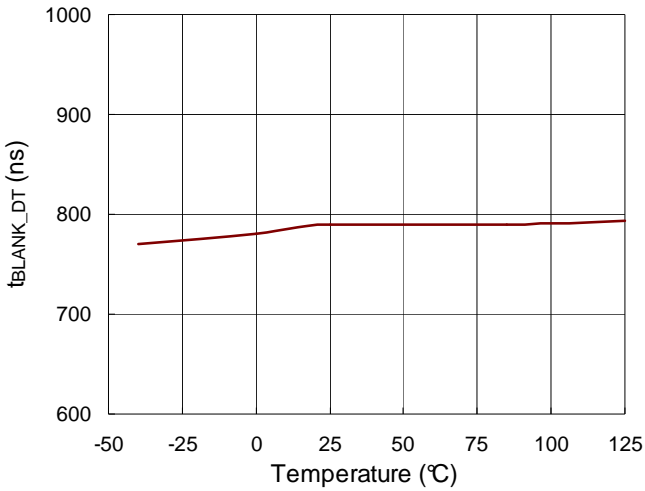
**V<sub>TH\_VTR\_OV</sub> vs. Temperature**



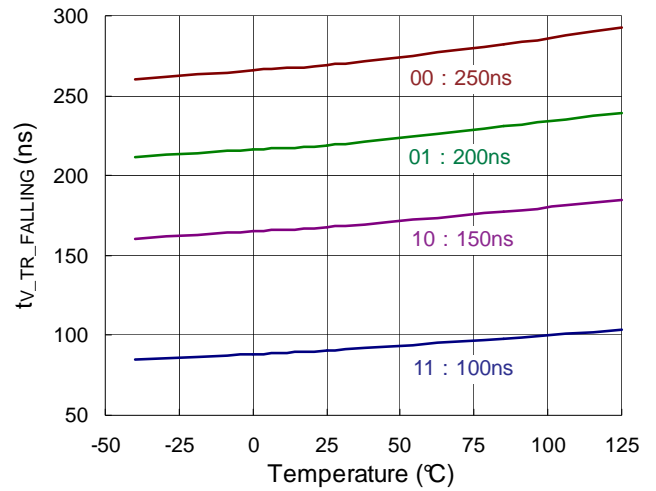
**V<sub>TH\_VTR\_DT</sub> vs. Temperature**



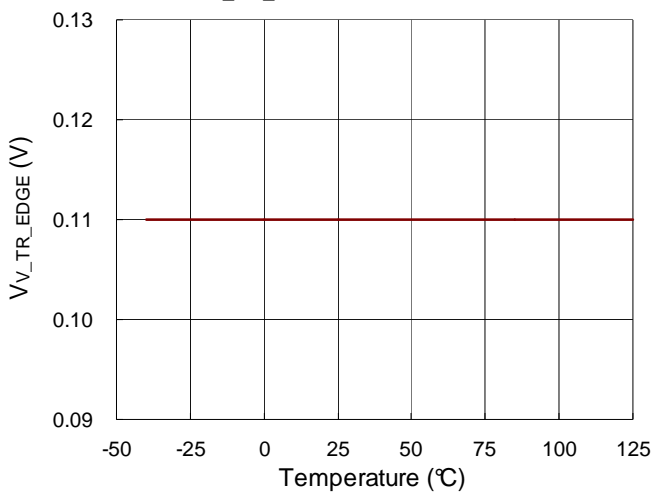
**t<sub>BLANK\_DT</sub> vs. Temperature**



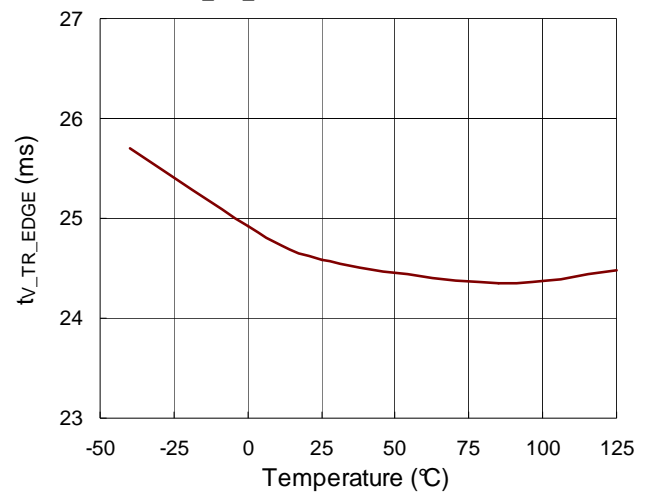
**t<sub>v\_TR\_FALLING</sub> vs. Temperature**

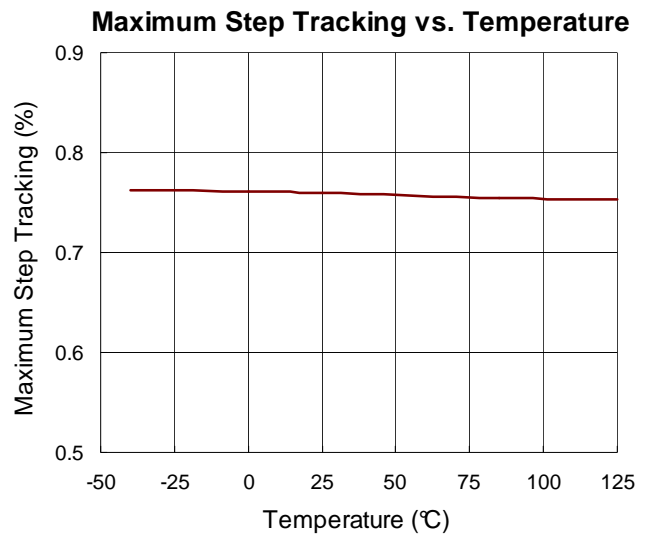
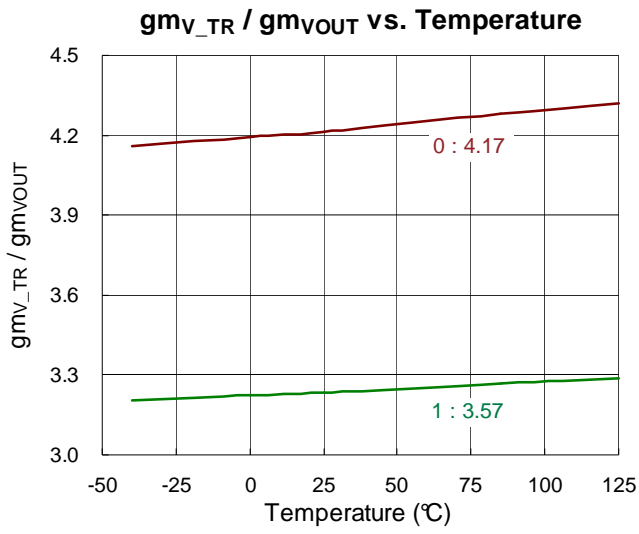


**V<sub>v\_TR\_EDGE</sub> vs. Temperature**



**t<sub>v\_TR\_EDGE</sub> vs. Temperature**





Application Information

Constant-Voltage (CV) Loop

The RT7205A incorporates 2 error amplifiers (EA) to regulate output voltage and current, respectively. The output voltage is determined as :

$$V_{OUT} = K_{VOUT} \times V_{REF\_CV}$$

Where

$$\text{For the RT7205A, } K_{VOUT} = (R_{FB1} + R_{FB2}) / R_{FB2} = 5 \text{ (typ)}$$

$$\text{For the RT7205AL, } K_{VOUT} = (R_{FB1} + R_{FB2}) / R_{FB2} = 2.5 \text{ (typ)}$$

Therefore, the  $V_{OUT}$  is determined by  $V_{REF\_CV}$ , the analog output from the DAC, and its digital counterpart, which is controlled by the MCU, as shown in Functional Block Diagram.

Constant-Current (CC) Loop and Current-Sense Amplifier

The RT7205A integrates a virtually-zero input-offset-voltage current-sense amplifier with differential-mode inputs to minimize noise interference. The amplified output current sense signal, sent to an ADC for A/D conversion, is monitored and processed by the MCU, and is also sent to the CC loop. The reference voltage of the CC loop is determined by  $V_{REF\_CC}$  (from the DAC), which is

programmed by chargers' requirements.

Both the constant-voltage and constant-current compensation loops are connected together at the OPTO pin. The OPTO driver sinks current through an optocoupler and an external resistor  $R_D$  from output voltage, and the optocoupler isolates the secondary side from the primary side and also provide the feedback compensation signal for the primary side. Note that for better linearity of the loop compensation range,  $R_D$  should be designed to cover for operation at the minimum output voltage.

$$\frac{V_{OUT\_MIN} - V_F - 0.3V}{R_D} \times CTR \geq I_{COMP\_MAX}$$

CTR : Current transfer ratio of the optocoupler

$V_F$  : Forward voltage of the optocoupler

0.3V : The minimum OPTO voltage for the OPTO driver to sink 2mA.

$I_{COMP\_MAX}$  : The maximum COMP sourcing current of a traditional PWM controller in the primary side. It is a current sourced from an internal bias through a built-in pull-high resistor connected the COMP pin in the PWM controller.

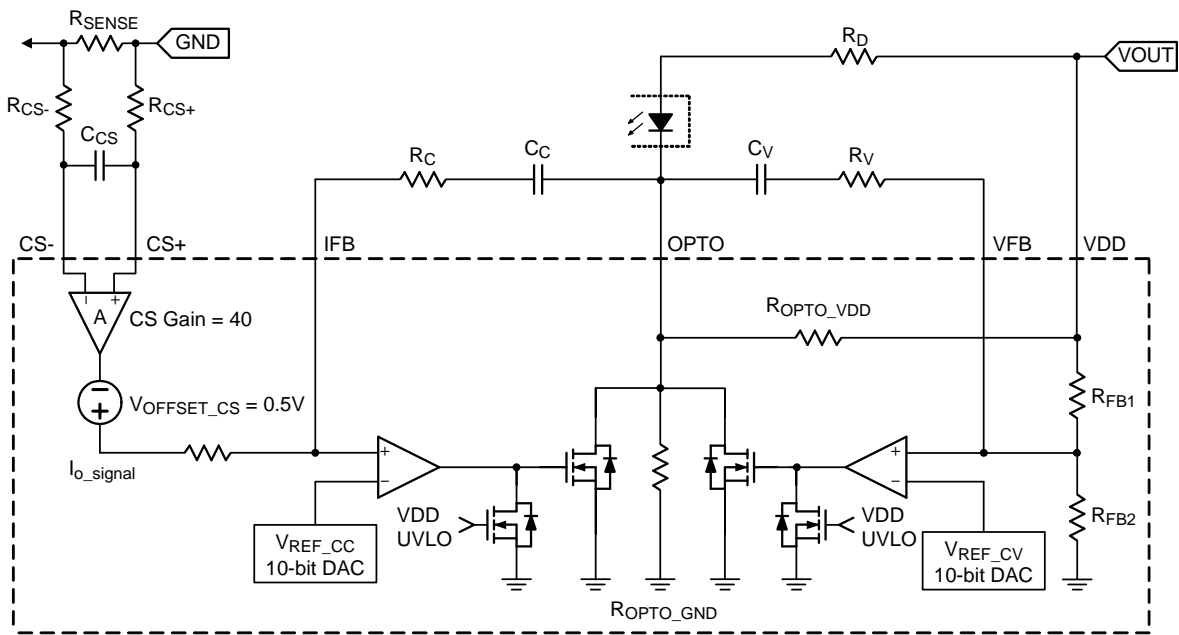


Figure 6. CV Loop and Current-Sense Amplifier

**Power-Up Sequence**

Once a Type-C cable is attached, the UFP will deliver voltage and current settings to the RT7205A for the MCU to decode and to program reference voltages,  $V_{REF\_CV}$  and  $V_{REF\_CC}$ , for the CV and CC loops, which are the analog outputs converted by the DAC. If the Type-C cable is detached, or the output current is lower than the power-saving mode threshold, which is typically programmed as 200mA, the RT7205A will enter power-saving mode, under which the RT7205A operates at ultra-low operating current and thus the total input power can be saved. If the output current increases and exceeds the power-saving mode threshold, or any input/output signal is toggled, the RT7205A will exit power-saving mode.

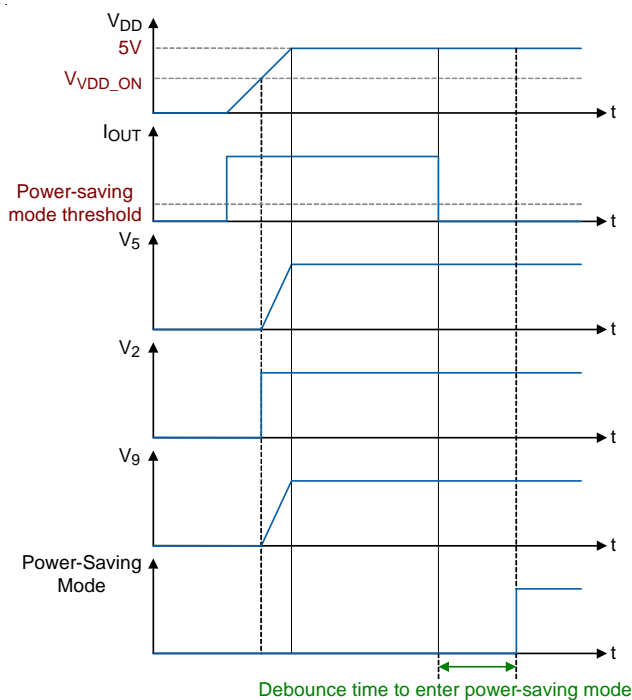


Figure 7. The Bias Voltages Sequence during Start-Up

**Internal Biases and Charge Pump**

The RT7205A provides three regulated bias voltages,  $V_5$ ,  $V_2$ , and  $V_9$ . The  $V_5$  bias voltage is the output of a linear regulator powered by  $V_{DD}$ , and supplies the internal analog circuit and the charge pump driver. The  $V_2$  bias voltage is the output of a linear regulator powered by  $V_5$ , and supplies the MCU. As shown in Figure 8, the RT7205A also integrates a charge pump circuit to generate  $V_9$  to supply for the SR driver when  $V_{DD}$  is at lower levels, such as 3V

to 5V. If the RT7205A enters power-saving mode, the charge pump driver will be disabled.

The minimum source/sink capability of the charge pump driver is around 10mA at 170kHz of charge pump operating frequency  $f_{CP}$ . Bypass capacitors on the  $V_5$ ,  $V_2$  and  $V_9$  pins are required to minimize output ripples of the biases.

$$V_9 = V_5 \times 2 - V_{F\_DCP1} - V_{F\_DCP2} - I_{V9} \times R_{OUT\_CP}$$

When output voltage is set at lower levels ( $< 5V$ ),  $V_5$  will be lower, following  $V_{DD}$  by a voltage drop of a dropout voltage of the LDO. For higher  $V_9$ , a lower forward voltage for the Schottky diodes,  $D_{CP1}$  and  $D_{CP2}$ , is required.

The RT7205A provides  $V_5$  short-circuit protection against the condition that the  $V_5$ ,  $V_2$ , or  $V_{CP}$  pin is shorted to GND, and also provides under-voltage protection for  $V_9$ . If the  $V_9$  voltage is below  $V_{V9\_SRON}$  (typical 4.5V), the SR driver will be turned off by firmware, that is,  $V_G$  will be inactivated.

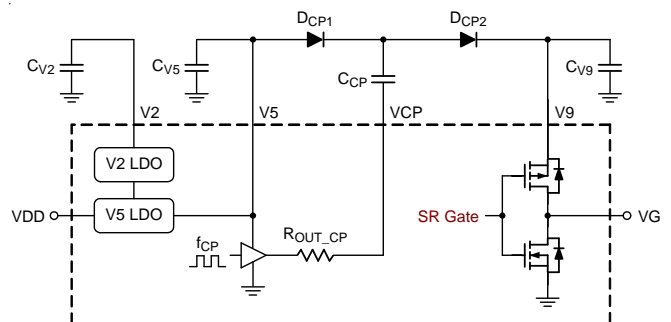
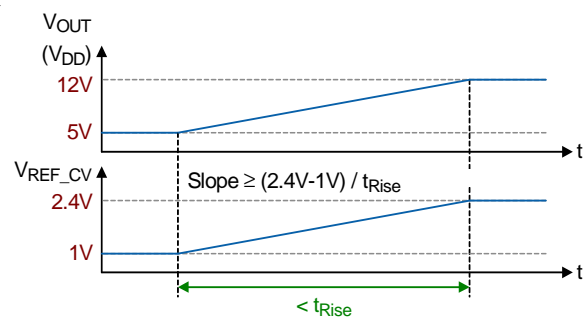


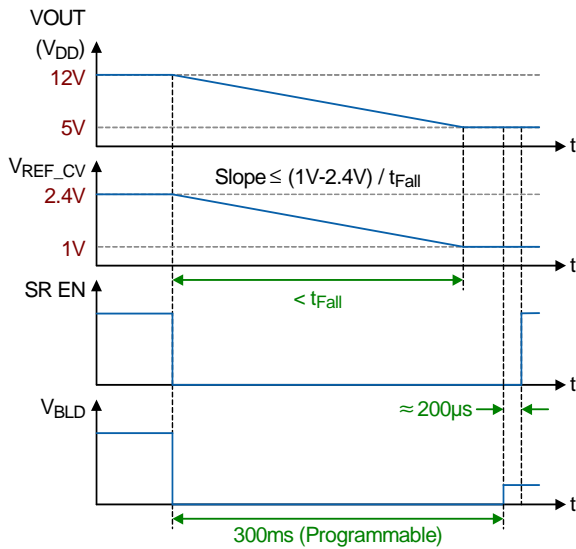
Figure 8. Charge Pump Circuit

**Output Voltage Rises and Falls**

When the protocol is detected, the reference voltage  $V_{REF\_CV}$  can be set by the request of the UFP. Both the rise time and fall time of output voltages should be less than define specification, as shown in Figure 9.



(a) Output Voltage Rising



(b) Output Voltage Falling

Figure 9. Output Voltage Transient Waveforms

During the time of  $V_{OUT}$  falling, as shown in Figure 10, the BLD driver will be turned on as a dummy load to provide an extra discharging path for the output capacitor so that  $V_{OUT}$  can be settled in a shorter duration. The resistance of  $R_{DUMMY}$  can be calculated as below :

$$2 \times C_{OUT} \times (R_{DUMMY} + R_{L\_BLD}) < t_{Fall}$$

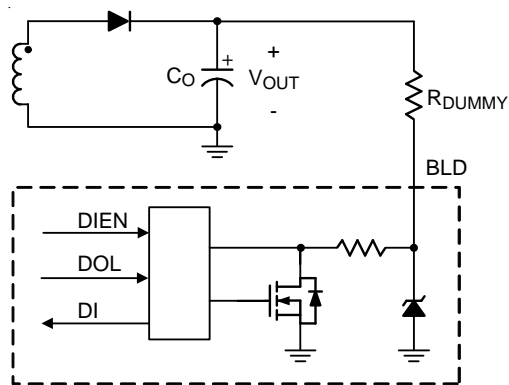


Figure 10. Application Circuit of an Active Dummy Load

During the time of  $V_{OUT}$  rising or falling, the SR driver will be turned off. After a firmware programmable delay time 300ms, the RT7205A will sense the load condition and may reactivate the SR driver.

**Temperature Sensing and Thermal Protection**

The RT7205A provides the RT pin for over-temperature protection or thermal monitoring. As shown in Figure 2, the RT pin sources a constant bias current for a remote thermal sensor of an NTC thermistor, connected from the RT pin to GND, for temperature sensing. If the RT voltage is below a programmable threshold voltage and the condition sustains for a programmable deglitch time, over-temperature protection will be triggered.

The bias current through the RT pin can be programmed as 100µA, 20µA, or 4µA by setting the internal register. With the appropriate bias current setting, linearity of temperature sensing over the temperature range of 25°C to 100°C can be improved. The RT7205A can deliver the sensed RT voltage data back to the UFP via the protocol (Vendor Defined Message), if necessary. Figure 11 shows the RT voltages vary with temperature at three different bias currents with an NTC thermistor TTC104 as an example.

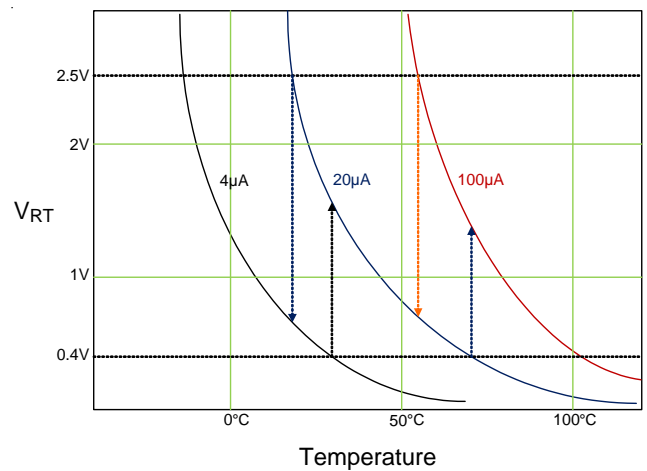


Figure 11. The RT Voltages vs. Temperature at Three Bias Currents

**Blocking N-MOSFET Control (USBP)**

RT7205A provides a push-pull driver for controlling external blocking N-MOSFET as shown in the Figure 12. The push-pull driver not only can control N-MOSFET smooth turn-on to avoid  $V_{OUT}$  drops in the capacitive load condition but also provide quickly turn-off in any fault condition.



Once the communication is set up with an UFP, or a 5.1kΩ resistor at the CC1/CC2 pin of a Type-C connector of the UFP is detected, the N-MOSFET will be turned on. If  $V_{OUT}$  over-voltage condition occurs, the blocking N-MOSFET will be turned off to prevent the UFP from being damaged by the  $V_{OUT}$  over-voltage condition. If  $V_{OUT}$  is shorted to GND, the N-MOSFET will also be turned off automatically so that output power can be limited.

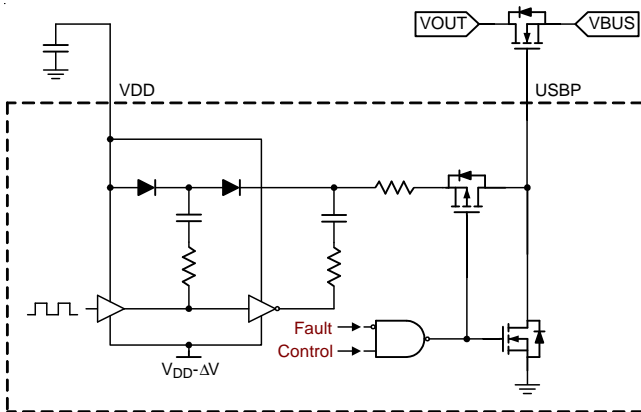


Figure 12. Blocking N-MOSFET Control

**Output Over-Voltage Protection**

As shown in the Figure 13 and Figure 14, the RT7205A provides the OVP pin as a backup  $V_{OUT}$  over-voltage protection, in case the optocoupler of the feedback loop is malfunction due to aging. If the internal voltage related to VDD is higher by the programmable threshold  $V_{VOUT\_OVP}$ , the OVP pin will be pulled low. The OVP pin voltage will be latched low until the VDD voltage drops below the VDD turn-off threshold  $V_{VDD\_OFF}$ .

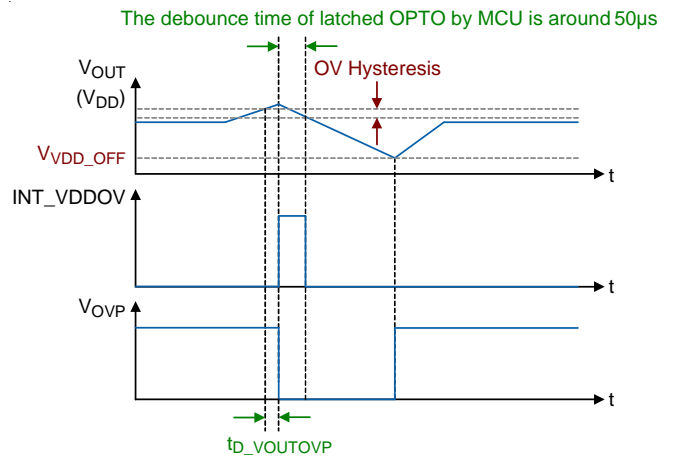


Figure 13. Timing Sequence of the OVP Function

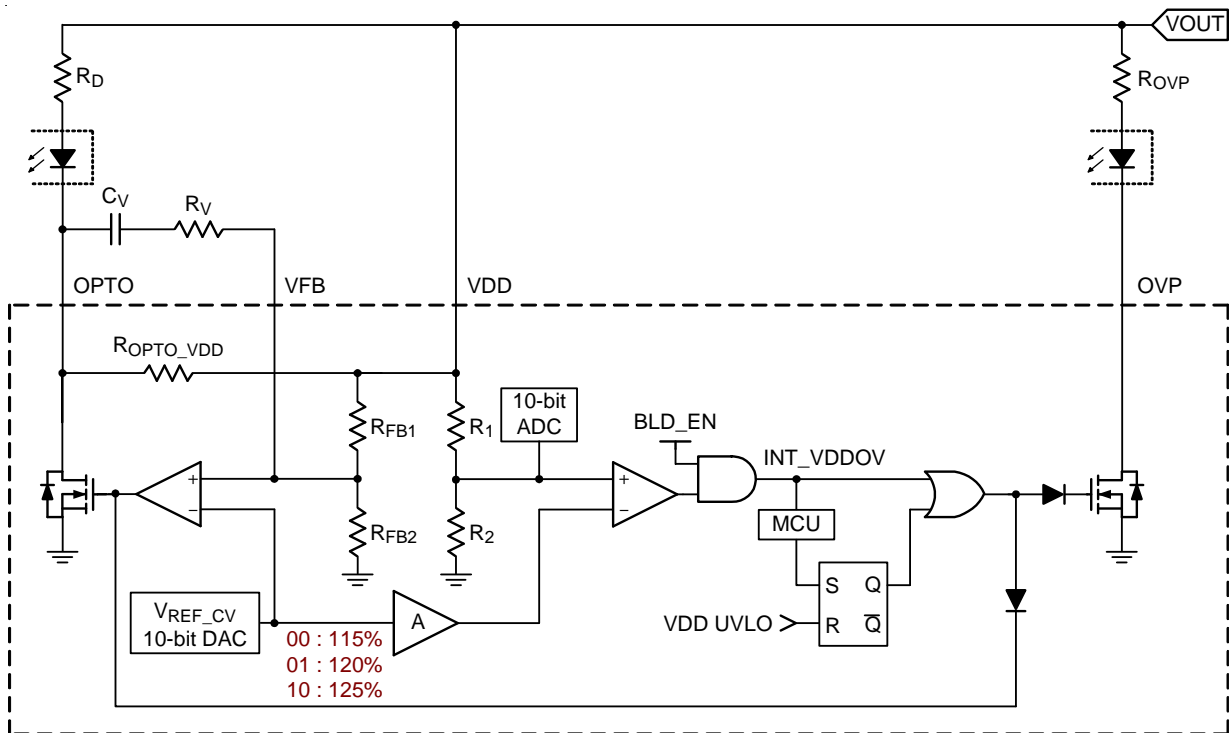


Figure 14. OVP Pin Block Diagram

### Thermal Considerations

The junction temperature should never exceed the absolute maximum junction temperature  $T_{J(MAX)}$ , listed under Absolute Maximum Ratings, to avoid permanent damage to the device. The maximum allowable power dissipation depends on the thermal resistance of the IC package, the PCB layout, the rate of surrounding airflow, and the difference between the junction and ambient temperatures. The maximum power dissipation can be calculated using the following formula :

$$P_{D(MAX)} = (T_{J(MAX)} - T_A) / \theta_{JA}$$

where  $T_{J(MAX)}$  is the maximum junction temperature,  $T_A$  is the ambient temperature, and  $\theta_{JA}$  is the junction-to-ambient thermal resistance.

For continuous operation, the maximum operating junction temperature indicated under Recommended Operating Conditions is 125°C. The junction-to-ambient thermal resistance,  $\theta_{JA}$ , is highly package dependent. For a WQFN-24L 4x4 package, the thermal resistance,  $\theta_{JA}$ , is 28°C/W on a standard JEDEC 51-7 high effective-thermal-conductivity four-layer test board. The maximum power dissipation at  $T_A = 25^\circ\text{C}$  can be calculated as below :

$$P_{D(MAX)} = (125^\circ\text{C} - 25^\circ\text{C}) / (28^\circ\text{C/W}) = 3.57\text{W for a WQFN-24L 4x4 package.}$$

The maximum power dissipation depends on the operating ambient temperature for the fixed  $T_{J(MAX)}$  and the thermal resistance,  $\theta_{JA}$ . The derating curves in Figure 14 allows the designer to see the effect of rising ambient temperature on the maximum power dissipation.

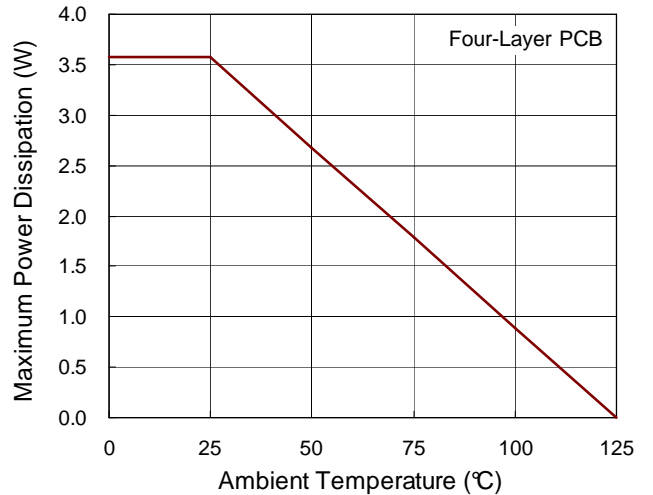
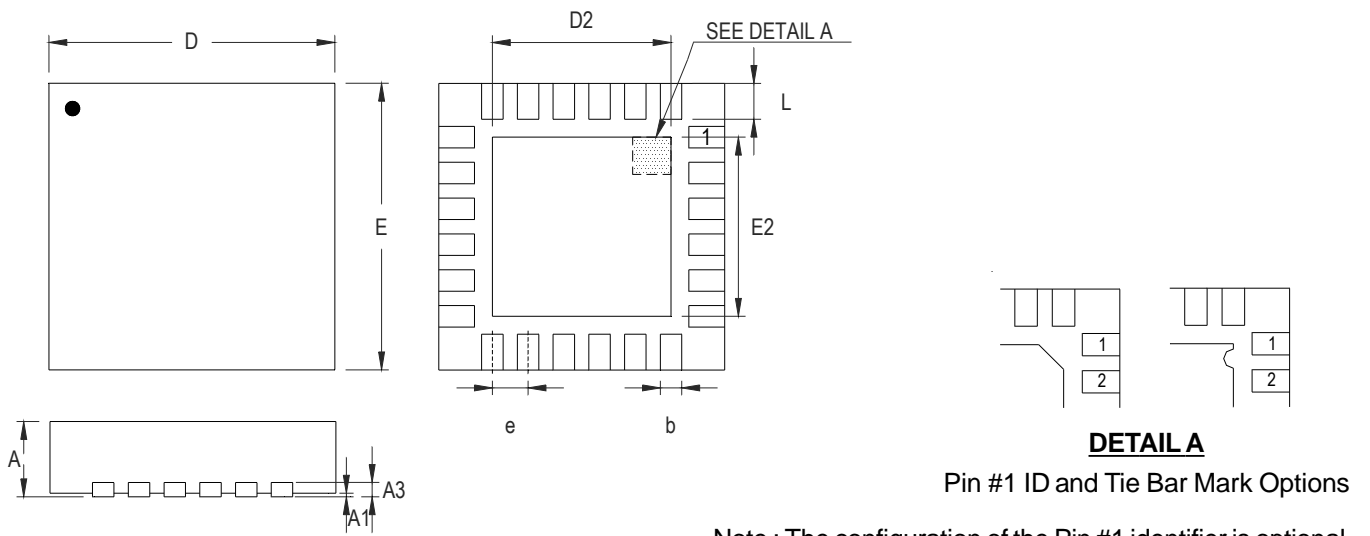


Figure 14. Derating Curve of Maximum Power Dissipation

**Outline Dimension**

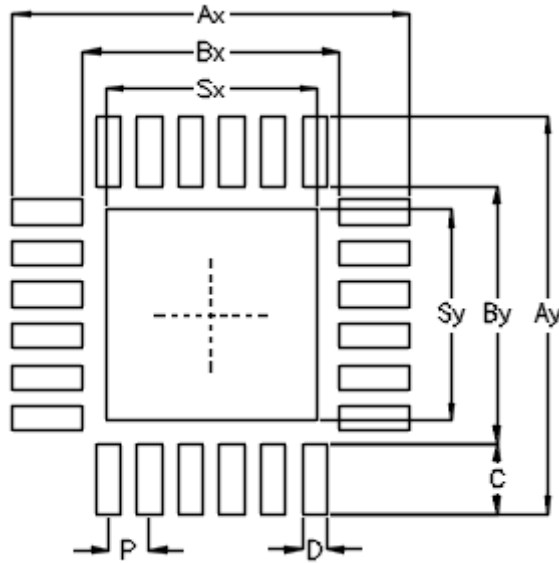


Note : The configuration of the Pin #1 identifier is optional, but must be located within the zone indicated.

Symbol	Dimensions In Millimeters		Dimensions In Inches		
	Min	Max	Min	Max	
A	0.700	0.800	0.028	0.031	
A1	0.000	0.050	0.000	0.002	
A3	0.175	0.250	0.007	0.010	
b	0.180	0.300	0.007	0.012	
D	3.950	4.050	0.156	0.159	
D2	Option 1	2.400	2.500	0.094	0.098
	Option 2	2.650	2.750	0.104	0.108
E	3.950	4.050	0.156	0.159	
E2	Option 1	2.400	2.500	0.094	0.098
	Option 2	2.650	2.750	0.104	0.108
e	0.500		0.020		
L	0.350	0.450	0.014	0.018	

**W-Type 24L QFN 4x4 Package**

Footprint Information



Package		Number of Pin	Footprint Dimension (mm)									Tolerance
			P	Ax	Ay	Bx	By	C	D	Sx	Sy	
V/W/U/XQFN4*4-24	Option1	24	0.50	4.80	4.80	3.10	3.10	0.85	0.30	2.55	2.55	±0.05
	Option2									2.60	2.60	

Richtek Technology Corporation

14F, No. 8, Tai Yuen 1<sup>st</sup> Street, Chupei City  
 Hsinchu, Taiwan, R.O.C.  
 Tel: (8863)5526789

Richtek products are sold by description only. Richtek reserves the right to change the circuitry and/or specifications without notice at any time. Customers should obtain the latest relevant information and data sheets before placing orders and should verify that such information is current and complete. Richtek cannot assume responsibility for use of any circuitry other than circuitry entirely embodied in a Richtek product. Information furnished by Richtek is believed to be accurate and reliable. However, no responsibility is assumed by Richtek or its subsidiaries for its use; nor for any infringements of patents or other rights of third parties which may result from its use. No license is granted by implication or otherwise under any patent or patent rights of Richtek or its subsidiaries.